

# STATEWIDE MOUNTAIN LION SUMMARY 2009

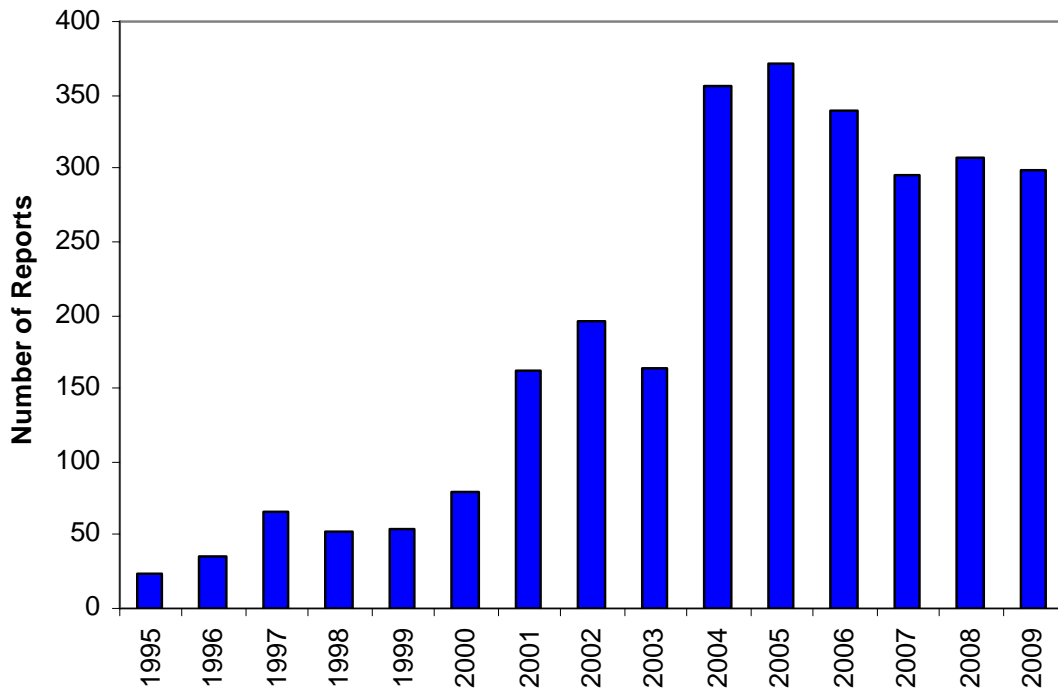
## Mountain Lion Reports

Mountain lion reports were documented from January 1 to December 31, 2009. A total of 298 reports were documented in 2009, compared to 307 reports in 2008. The total number of reports declined in 2009 by 3% from 2008 (Graph 1). The number of verified reports increased in 2009 by 14%, from 61 to 70 (Graph 2). Reports were taken across the state but were most prevalent in the Black Hills Region. Reports were fairly evenly distributed across the 12 month period in 2009 (Graph 3). As part of the Department's continuing effort to educate the public about mountain lions, brochures were made available to individuals reporting a lion. The following figures, tables, and graphs summarize the information collected from mountain lion reports:

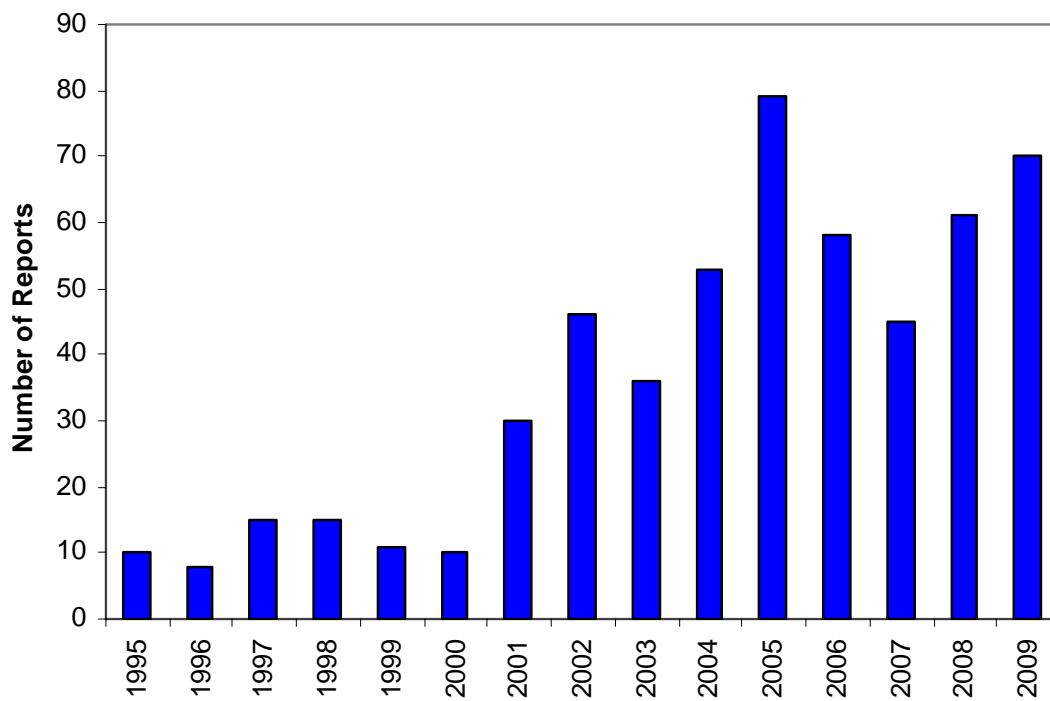
Figure 1. Locations of lion reports in South Dakota in 2009.



Graph 1. Total mountain lion sightings/reports 1995 – 2009.



Graph 2. Total verified mountain lion sightings/reports 1995 – 2009.



Graph 3. Total reports by month January 1 – December 31, 2009.

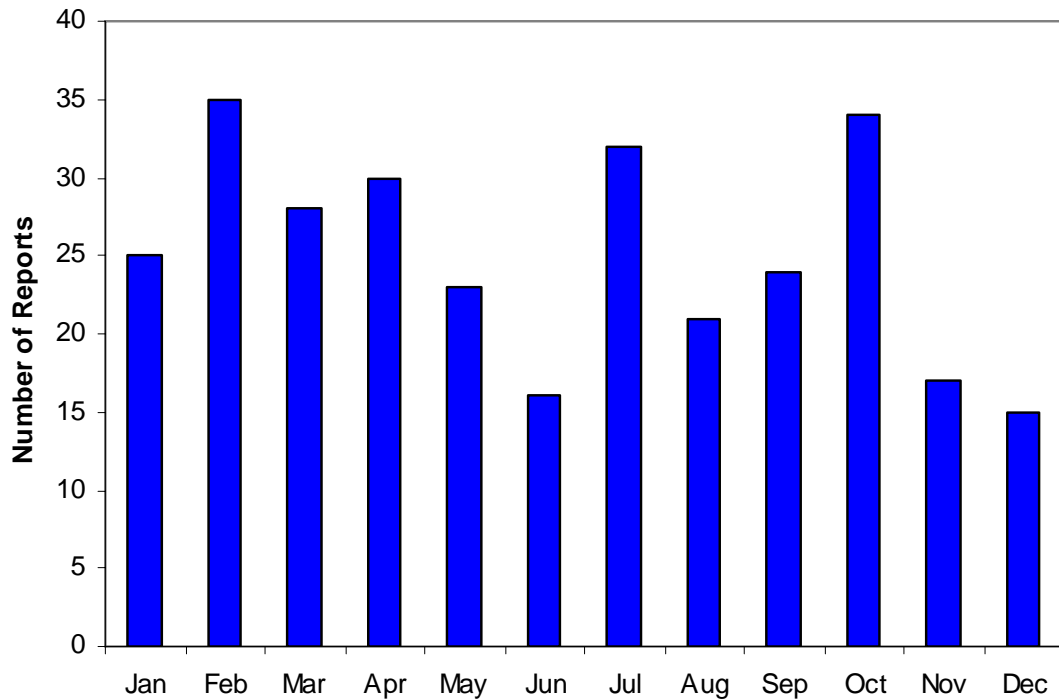


Table 1. Location of Observations:

City Limits	43*
Rural Subdivision	39
Rural Agriculture	57
Unpopulated	21

Table 2. Number of Reports by County:

Beadle	2	Fall River	20	Meade	26
Bennett	1	Grant	2	Miner	1
Brookings	2	Gregory	1	Minnehaha	7
Butte	1	Hamlin	2	Moody	1
Campbell	1	Hand	1	Pennington	130
Charles Mix	1	Hutchinson	1	Perkins	1
Clark	3	Jerauld	1	Roberts	3
Clay	2	Kingsbury	1	Stanley	1
Codington	1	Lake	4	Tripp	1
Custer	19	Lawrence	42	Turner	2
Davison	1	Lincoln	4	Yankton	5
Douglas	1	Marshall	2		
Edmunds	1	McCook	3		

Table 3. Sighting/Event Verification:

Verified (Evidence that it was a lion)	70
Unverified (No evidence one way or the other)	160
Unfounded (Evidence that it was not a lion)	68

Table 4. Reported Cougar Behavior:

Not Seen	75*
Sedentary	15
Walking	48
Running	18
Chasing/Stalk	8
Aggressive/Defensive	8
Evasive	4

Table 5. Type of Event Reported:

Sign	68
Visual Observation	159
Close Encounter	9
Wildlife Kill	27
Attack Pet	12
Attack Livestock	23

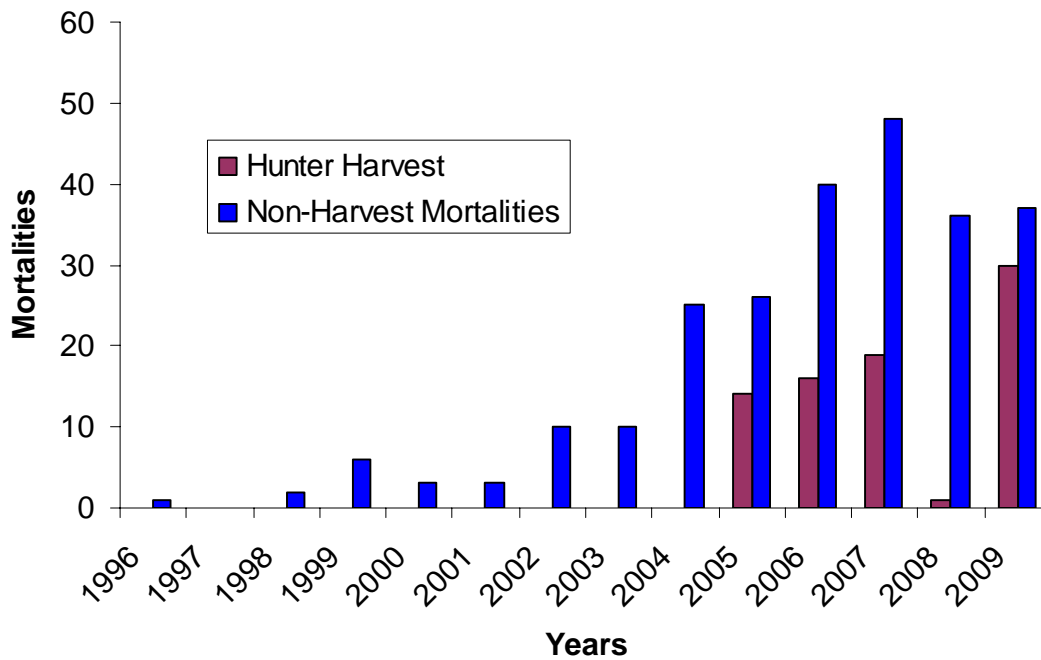
\* Not all fields are required and totals may not add up to the total number of reports

## Mountain Lion Mortality

Table 6. 2009 Mountain Lion Mortality Summary.

Classification of Mortality	Total	% of Total
Removal	15	22.4%
Public Removal	2	3.0%
Vehicle	5	7.5%
Hunter Harvest	30	44.8%
Interaction	2	3.0%
Sick/Emaciation	6	9.0%
Unknown	7	10.4%
<b>Total</b>	<b>67</b>	

Graph 4. Mountain Lion Mortalities by Year.



## Mountain Lion Hunting Season

### Season Design:

- Regular season dates were set for Jan 1, 2009 – Mar 31, 2009.
- Landowner season was established year round outside of Black Hills Fire Protection District. Landowners who purchased a mountain lion tag were allowed to hunt outside the regular mountain lion season, but were restricted to their own land, and were limited to one lion per calendar year.
- Unlimited licenses with only one license per hunter.
  - Fee \$15, valid statewide
- NO dogs, trapping or baiting.
- NO harvest of spotted lions or lions traveling together.
- Mandatory check of lions harvested within 24 hours @ Rapid City Regional Office

Figure 2. Mountain Lion Harvest Locations:



### Legend

#### 2009 Mountain Lion Harvest Locations

#### Season

- Regular
- Prairie Landowner

Table 7. Mountain Lion Harvest Summary

<u>ID Number</u>	<u>Date of Harvest</u>	<u>Sex</u>	<u>Estimated Age</u>	<u>Weight</u>
01-09	01/01/2009	F	1.5 - 2.5 years	75
02-09	01/02/2009	F	5 months	46
03-09	01/03/2009	F	6 years	101
04-09	01/03/2009	F	10.5 years	108
05-09	01/06/2009	F	1.5 years	84
06-09	01/07/2009	M	3 years	145
07-09	01/08/2009	M	3.5 years	138
08-09	01/08/2009	M	7 years	159
09-09	01/10/2009	M	4-5 years	140
10-09	01/10/2009	M	1.5-2 years	121
11-09	01/10/2009	F	2-3 years	92
12-09	01/11/2009	F	2 years	92
13-09	01/13/2009	F	1.5-2.5 years	100
14-09	01/15/2009	M	3-4 years	147
15-09	01/16/2009	M	6 months	53
16-09	01/16/2009	F	1.5 - 2.5 years	76
17-09	01/15/2009	M	5 months	43
18-09	01/16/2009	M	7 years	129
19-09	01/23/2009	F	2-3 years	88
20-09	01/24/2009	M	3-4 years	140
21-09	01/24/2009	F	2-3 years	87
22-09	01/26/2009	M	5-6 years	129
23-09	01/31/2009	F	1.5-2.0 years	80
24-09	02/02/2009	F	3-4 years	92
25-09	02/13/2009	F	2-3 years	98
26-09	02/14/2009	F	1.5 years	78
LO-01-09	03/08/2009	M	2-3 years	113
LO-02-09	11/19/2009	F	2-2.5 years	-
LO-03-09	11/26/2009	F	1-2.5 years	92
LO-04-09	12/02/2009	M	1.5 years	90