

# UTAH COUGAR ANNUAL REPORT 2010



Publication No. 11-06



# UTAH COUGAR ANNUAL REPORT 2010

Prepared by:

**Heather H. Bernales**  
Biometrician

**Justin Dolling**  
Game Mammals Program Coordinator

and

**Kevin Bunnell**  
Mammals Program Coordinator

Publication No. 11-06

Annual Performance Report for Federal Aid Project W-65-M, segments 58 and 59

State of Utah  
Department of Natural Resources  
DIVISION OF WILDLIFE RESOURCES

An Equal Opportunity Employer

**James F. Karpowitz**  
Director

## TABLE OF CONTENTS

Introduction .....	1
Methods .....	2
Results .....	2
Permits .....	3
Statewide harvest and mortality .....	4
Sport harvest and hunter effort .....	6
Survival .....	9
Guiding .....	9
Age and sex ratios .....	10
Pursuit .....	11
Livestock depredation .....	14
Appendix: Historic cougar harvest by hunt unit .....	15

## **INTRODUCTION**

The cougar harvest report presents cougar harvest and hunter effort trends across the state of Utah, based on data collected from cougar hunters. This report represents the cougar portion of Federal Aid Project W-65-M, segments 58 and 59, grant agreement periods October 1, 2009 through September 30, 2010 and October 1, 2010 through September 30, 2011, respectively. This Federal Aid project covers cougar hunting season 2009-2010.

For purposes of effective management, the state of Utah is divided into 30 wildlife management units, which are the same for all hunted species. Some of these units were divided further into subunits for cougar hunting in order to direct hunter pressure, resulting in a total of 49 units and subunits in 2009-2010. 11 of these units were managed through a limited entry permit system, where a hunter had to apply for and draw from a pool of limited permits. The hunter was allowed to hunt the entire limited entry season, or until the permit was filled. 16 units were managed through a harvest objective system, where a harvest quota was set and an unlimited number of hunters could hunt. The unit remained open until either the harvest quota was reached or the season closed. 22 units were managed through a split hunting season system, with the first half of the season managed through a limited entry permit system. Then, if the harvest quota was not filled by the close of the limited entry season, the remaining season was managed through a harvest objective system where the harvest quota was set as the number of permits that remained unfilled at the close of the limited entry season. Limited entry permits on split units became valid statewide harvest objective permits if hunters did not fill their tags during the limited entry season.

Applicants who drew a limited entry permit for the 2009-2010 cougar seasons were required to wait 3 years before applying for another permit. The waiting period did not apply to harvest objective permit holders. The season limit was one cougar, and females with kittens, or kittens with spots, were not legal to harvest.

Cougar pursuit was allowed in all 49 cougar subunits during the 2009-2010 season, provided pursuers obtained a valid cougar pursuit permit. An unlimited number of pursuit-only permits, valid on any open unit statewide, were available. Hunters who obtained a limited entry or harvest objective permit could pursue cougar on the unit for which the permit was valid.

### **Season Dates**

For the 2009-2010 year, the limited entry hunting season for limited entry-only units opened November 18, 2009 and closed May 31, 2010. The limited entry hunting season in split units opened November 18, 2009 and closed February 28, 2010, at which time these units became harvest objective units from March 6, 2010 through May 31, 2010. The harvest objective season for harvest objective-only units opened November 18, 2009 and closed November 13, 2010. Cougar pursuit season dates matched those of the hunt season dates in all 49 units, except for the harvest objective units, in which units were closed to pursuit from August 14, 2010 through October 31, 2010.

## **METHODS**

All successful hunters were required to have their cougar checked by a Division of Wildlife Resources office or officer within 48 hours of harvest. At that time, tooth and hair samples were collected, and a permanent tag affixed. Cougar harvest information was also collected at that time. Teeth were sectioned and cementum annuli counted by Matson's Lab in Milltown, Montana, to estimate age of harvested cougar. Survival rates were estimated using the Chapman-Robson estimator.

In past years, a cougar harvest mail questionnaire was sent each spring to all cougar permit holders. This questionnaire was used to obtain hunter effort information from those who did not harvest a cougar. Beginning with the 2001-2002 cougar season, this questionnaire was discontinued. Since then, total hunters afield was estimated at 93% of total license sales (previous 5-yr average hunters afield). Since then, all hunter effort information (hunter-days afield, hunter-days per hunter, and hunter-days per cougar) was collected when harvested cougars were checked and tagged by the Division, and a projection factor was calculated by dividing total hunters afield by the total hunters who checked in a cougar. This projection factor was used to determine hunter-days afield for all hunters, assuming that the average amount of time spent afield by successful hunters was similar to the time spent afield by non-successful hunters. Cougar pursuit information was obtained using a random telephone survey of a sub-sample of cougar pursuit permit holders.

Harvest data from depredating cougar was taken from damage reports received from USDA-APHIS Wildlife Services. Livestock operators could kill damaging cougar and were required to have the carcass checked by a Division officer within 48 hours. Harvest information was collected at that time.

## **RESULTS**

For the 2009-2010 cougar season, 314 limited entry permits and 758 harvest objective permits were sold. Total limited entry permits included 287 limited entry permits, 19 regional or statewide conservation permits, and 7 unit convention permits. A total of 304 cougars were harvested during the 2009-2010 sport season. Success rate on limited entry units (including split units) was 65%, while the percent of quota that was filled on harvest objective units was 71%. Also, 89% conservation permit holders harvested cougars this year. 6 of the cougar units filled 100% of their limited entry permits or met their harvest objective quota and closed early. There were 18 cougars taken by Wildlife Services during the 2009-2010 season, and 35 other mortalities (roadkill, found dead, DWR control).

900 cougar pursuit permits were sold and 733 pursuers went afield during the 2009-2010 cougar pursuit season. Cougars treed per pursuer was 4.9, with 0.24 cougars treed per day-afield.

Cougar permits sold since the implementation of limited entry hunts, Utah 1990–2010.

Year	Limited entry permits			Harvest objective permits			Total permits
	Resident	Nonresident	Cons/Conv	Total	Resident	Nonresident	
1990	385	142		527			527
1991	383	142		525			525
1992	383	142		525			525
1993	431	160		591			591
1994	479	180		659			659
1995	559	232		791			791
1996	611	261		872			872
1997	425	170		595			901
1998	381	128		509	472	199	671
1999	337	109		446	386	189	575
2000	259	84		343	374	170	544
2001	206	66		272	880	290	1170
2002	228	30	8	266	897	300	1197
2003	326	36	12	374	685	266	951
2004	215	29	20	264	533	209	742
2005	233	30	10	273	841	290	1131
2006	356	38	12	406	464	222	686
2007	313	35	18	366	600	245	845
2008	278	33	26	337	587	238	825
2009	265	33	25	323	543	220	763
2010	256	31	26	313	566	192	758
Mean	348	101	17	435	602	233	784

\*Combination of limited entry and harvest objective hunting initiated in 1997.

Statewide cougar harvest and mortality statistics, Utah 1990–2010.

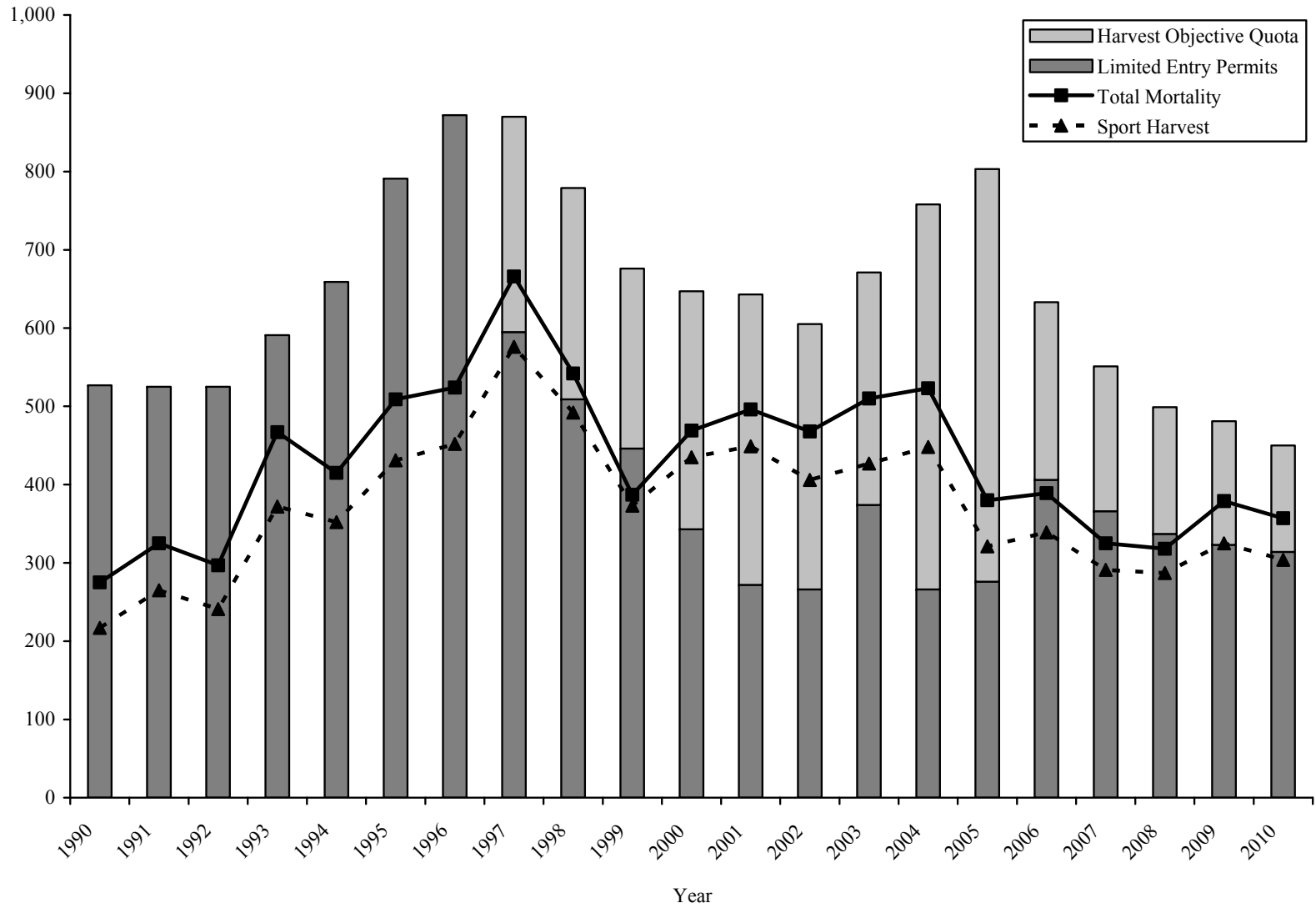
Year	Limited entry permits*	Harvest objective quota**	Sport male harvest	Sport female harvest	Total sport harvest	Mean age	% permits filled	% quota filled	% females	% ≥ 6 yrs old	Cougar treed / day	Adult survival (%)	Wildlife services harvest	Other mortality	Total harvest + mortality
1990	527		146	71	217		41		33		0.41		48	10	275
1991	525		184	81	265		50		31		0.49		38	22	325
1992	525		160	81	241		46		34		0.45		34	22	297
1993	591		260	112	372		63		30		0.49		53	42	467
1994	659		216	136	352		53		39		0.57		53	10	415
1995	791		262	169	431		54		39				54	24	509
1996	872		269	183	452	3.5	52		40	17	0.48	67	33	39	524
1997	595	275	297	279	576	3.8	56	88	48	20	0.33	67	40	50	666
1998	509	270	261	231	492	3.2	54	80	47	15	0.36	63	27	23	542
1999	446	230	206	167	373	3.1	49	64	45	10	0.30	62	13	1	387
2000	343	304	258	177	435	2.9	60	81	41	10	0.28	60	25	9	469
2001	272	371	242	207	449	3.3	52	35	46	13	0.30	63	27	20	496
2002	266	339	222	184	406	3.1	58	74	45	12	0.21	61	45	17	468
2003	374	297	251	175	427	3.6	58	77	41	13	0.29	63	53	30	510
2004	266	492	219	229	448	3.4	55	66	51	14	0.23	61	47	28	523
2005	276	527	190	131	321	2.5	45	36	41	7	0.17	54	38	21	380
2006	406	227	202	137	339	3.2	59	45	40	9	0.19	62	35	15	389
2007	366	185	173	117	291	2.9	59	42	40	11	0.22	63	9	25	325
2008	337	162	171	116	287	2.9	53	59	40	7	0.27	56	13	18	318
2009	323	158	207	118	325	2.9	70	61	36	10	0.26	61	21	31	377
2010	313	136	199	104	304	3.2	65	71	34	7	0.24	58	18	35	357
Mean	456	284	219	153	372	3.2	55	63	41	11	0.33	61	35	23	430

\*Permits include all limited entry, conservation and convention permits.

\*\*Harvest quota in limited entry units during the harvest quota season are the total number of limited entry permits minus the number of cougars harvested during the limited entry season

Other mortality includes DWR control, roadkill, poaching, found dead, etc.

Statewide cougar mortality and harvest objectives, 1990 through 2010.





Statewide cougar sport harvest statistics, Utah 1971–2010.

Year	Hunters afield	Sport harvest	Hunter-days afield	Hunter-days / hunter	Hunter-days / cougar	Cougars / hunter
1971	207	94	—	—	—	0.45
1972	92	51	—	—	—	0.55
1973	108	66	—	—	—	0.61
1974	176	103	963	5.5	9.3	0.59
1975	286	176	1149	4.0	6.5	0.62
1976	332	167	2379	7.2	14.2	0.50
1977	334	177	2098	6.3	11.9	0.53
1978	408	210	2443	6.0	11.6	0.51
1979	436	265	2312	5.3	8.7	0.61
1980	442	205	3081	7.0	15.0	0.46
1981	411	185	2496	6.1	13.5	0.45
1982	432	205	3526	8.2	17.2	0.47
1983	435	172	3728	8.6	21.7	0.40
1984	484	211	3874	8.0	18.4	0.44
1985	488	182	4839	9.9	26.6	0.37
1986	469	200	3785	8.1	18.9	0.43
1987	486	197	4657	9.6	23.6	0.41
1988	662	247	5690	8.6	23.0	0.37
1989	612	231	5811	9.5	25.2	0.38
1990	478	217	5240	11.0	24.1	0.45
1991	480	265	4069	8.5	15.4	0.55
1992	485	241	5089	10.5	21.1	0.50
1993	538	372	2403	4.5	6.5	0.69
1994	575	352	4863	8.5	13.8	0.61
1995	656	431	5585	8.5	13.0	0.66
1996	787	452	6060	7.7	13.4	0.57
1997	1376	576	8547	6.2	14.8	0.42
1998	1109	492	7857	7.1	16.0	0.44
1999	939	373	7213	7.7	19.3	0.40
2000	817	435	4636	5.7	10.7	0.53
2001	1341	449	5460	4.1	12.2	0.33
2002	1353	406	5545	4.1	13.7	0.30
2003	1231	427	5921	4.8	13.9	0.35
2004	936	448	3371	3.6	7.5	0.48
2005	1309	321	5746	4.4	17.9	0.25
2006	1016	339	4479	4.4	13.2	0.33
2007	1126	291	4863	4.3	16.7	0.26
2008	1081	287	4161	3.9	14.5	0.27
2009	1010	325	4887	4.8	15.0	0.32
2010	996	304	5805	5.8	19.1	0.31
Mean	673	279	4449	6.7	15.6	0.45
10-yr mean	1140	360	5024	4.4	14.4	0.32

\*Limited entry hunting initiated in 1990 and combination of limited entry and harvest objective hunting initiated in 1997.

\*\*Beginning in 2002, hunters afield was estimated as 93% of total licenses sold.

Statewide cougar sport harvest statistics by unit / subunit, Utah 2010.

Unit	Limited entry permits	Harvest quota	Sport male harvest	Sport female harvest	Total sport harvest	Mean age	% permits and harvest quota filled*	% females	% ≥ 6 yrs old	Cougar treed / day
Beaver	12		8	4	12	4.0	83	33	17	0.40
Book Cliffs, Bitter Creek	15		7	3	10	3.7	60	30	11	0.22
Book Cliffs, Rattlesnake Canyon		4	0	0	0		0			
Box Elder, Desert	5		0	2	2	4.0	40	100	50	0.44
Box Elder, Pilot Mountain		2	0	0	0		0			
Box Elder, Raft River	6		4	0	4	2.8	67	0	0	0.75
Cache	14		4	6	10	4.1	71	60	13	0.16
Central Mountains, Nebo	9		4	2	6	2.8	67	33	0	0.38
Central Mountains, Nebo-West Face	21		3	1	5	2.2	24	20	0	0.09
Central Mountains, Northeast Manti	13		3	8	11	2.7	85	73	0	0.13
Central Mountains, Northwest Manti	10		8	1	9	2.9	90	11	0	0.10
Central Mountains, Southeast Manti	11		5	6	11	6.4	100	55	40	0.32
Central Mountains, Southwest Manti	5		8	3	11	3.1	200	27	0	0.95
Chalk Creek/Kamas	5		4	4	8	2.3	80	50	0	0.67
East Canyon	2		1	0	1	5.0	50	0	0	0.19
East Canyon, Davis		5	2	2	4	4.0	80	50	0	0.25
Fillmore, Oak Creek		8	3	4	7	2.8	88	57	0	0.05
Fillmore, Pahvant	10		7	3	10	3.7	70	30	22	0.62
Henry Mountains		4	0	0	0		0			
Kaiparowits		7	4	1	5	2.0	71	20	0	0.00
La Sal Mountains		7	5	1	6	3.0	86	17	0	0.14
Monroe	10		3	3	6	3.5	60	50	0	0.39
Morgan-Rich	6		3	1	4	2.8	67	25	0	0.20
Mt. Dutton	10		3	5	8	4.9	80	63	43	0.83
Nine Mile		12	9	3	12	3.1	100	25	0	0.16
North Slope, Three Corners	7		1	0	1	2.0	14	0	0	0.23
North Slope, West Daggett/Summit	10		3	0	3	2.3	30	0	0	0.29
Ogden	11		6	1	7	2.3	55	14	0	0.14
Oquirrh-Stansbury	3		1	1	2	5.0	33	50	50	0.18
Panguitch Lake	10		6	4	10	3.3	100	40	10	0.21
Paunsaugunt	9		2	1	3	3.0	33	33	0	0.41

\*Percent permits filled does not include any harvest taken with conservation permits.

Statewide cougar sport harvest statistics by unit / subunit, Utah 2010 (cont.).

Unit	Limited entry permits	Harvest quota	Sport male harvest	Sport female harvest	Total sport harvest	Mean age	% permits and harvest quota filled	% females	% ≥ 6 yrs old	Cougar treed / day	
Pine Valley	18		7	6	13	3.6	68	46	0	0.13	
Plateau, Boulder	10		5	4	9	4.9	90	44	29	0.25	
Plateau, Fishlake	7		6	1	7	3.0	71	14	0	0.13	
Plateau, Thousand Lakes	5		2	1	3	1.0	60	33	0	0.00	
San Juan, Abajo	10		7	2	9	3.1	90	22	0	0.20	
San Juan, Elk Ridge		10	4	0	4	2.0	40	0	0	0.35	
San Rafael		4	1	0	1	2.0	25	0	0	0.09	
South Slope, Vernal/Bonanza/Diamond Mtn		15	13	3	16	2.8	107	19	8	0.15	
South Slope, Yellowstone		6	5	1	6	2.3	100	17	0	0.05	
Southwest Desert	6		2	0	2	3.0	33	0	0	0.14	
Wasatch Mountains, Avintaquin		10	5	4	9	3.5	90	44	0	0.30	
Wasatch Mountains, Cascade		9	4	4	8	2.3	89	50	0	0.37	
Wasatch Mountains, Currant Creek	7		2	0	2	2.5	29	0	0	0.05	
Wasatch Mountains, Timpanogos		12	3	1	4	3.3	33	25	0	0.11	
Wasatch Mountains, West	11		6	1	7	2.2	55	14	0	0.27	
West Desert, Mountain Ranges	3		1	0	1	4.0	33	0	0	0.11	
West Desert, Tintic-Vernon	3		1	0	1	5.0	33	0	0	0.14	
Zion		21	8	6	14	2.3	67	43	0	0.11	
Total*	313	136	199	104	304	3.2	65	71	34	7	0.24

\*Total permits includes 17 regionwide conservation permits, 1 statewide sportsman permit, and 1 statewide conservation permit that are not included in the unit-by-unit permit totals; 17 permits were filled and are added into harvest by unit. Percent permits filled does not include any harvest taken with conservation permits.

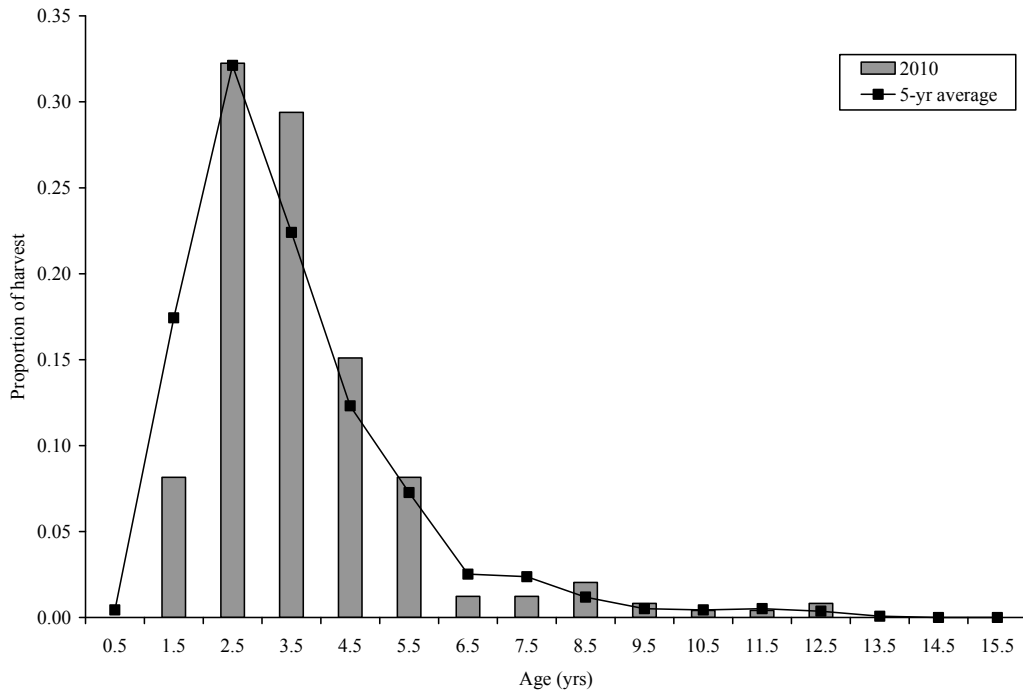
Adult cougar survival based on the Chapman-Robson estimator, Utah 1996–2010.

Year	n	Adult survival (%)	95% confidence interval
1996	316	66.5	63.5–69.5
1997	517	67.3	64.9–69.6
1998	377	62.5	59.5–65.5
1999	275	61.8	58.2–65.3
2000	301	59.7	56.2–63.3
2001	357	62.6	59.5–65.6
2002	283	60.3	56.7–63.9
2003	346	62.9	59.8–66.0
2004	321	61.4	58.1–64.8
2005	209	54.3	49.7–58.9
2006	248	62.1	58.4–65.8
2007	194	63.2	59.0–67.3
2008	208	56.4	52.0–60.9
2009	236	61.3	57.5–65.2
2010	225	58.4	54.2–62.5

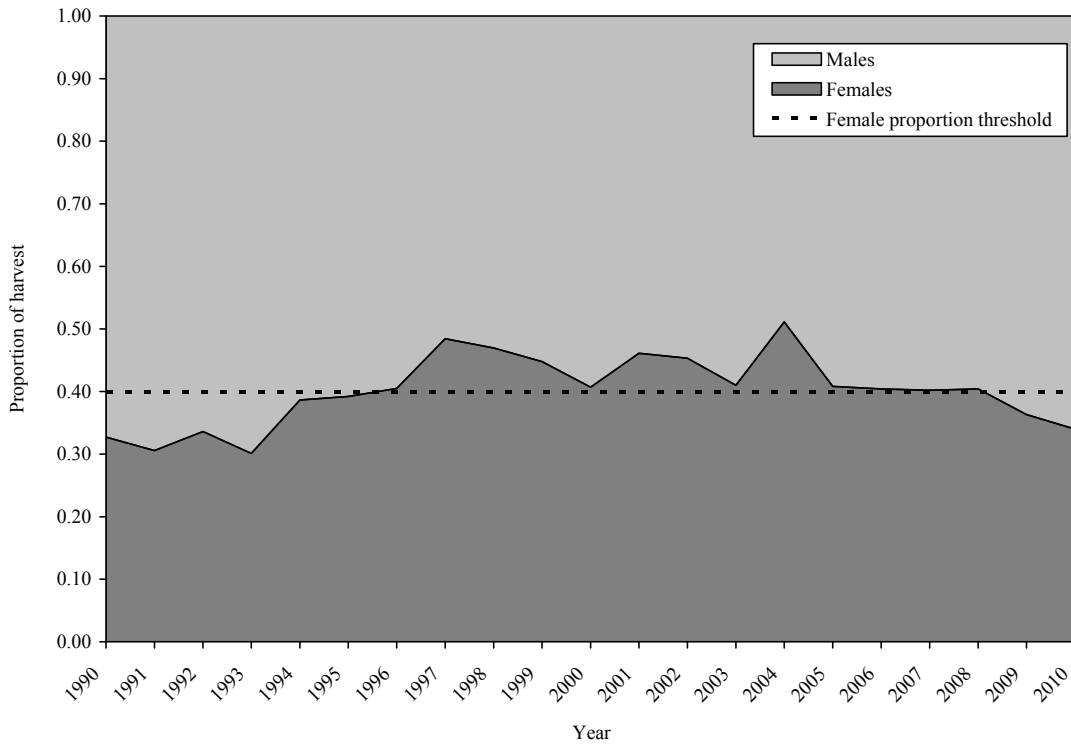
Guiding statistics for Utah cougar season, 2002–2010.

Year	Total harvest	Harvest with guide	% harvest with guide
2002	406	285	70.2
2003	427	291	68.1
2004	448	290	64.7
2005	321	202	62.9
2006	339	228	67.3
2007	291	194	66.7
2008	282	159	56.4
2009	325	199	61.2
2010	304	186	61.2

Proportion of cougars harvested by age class, Utah 2010.



Sex ratio of sport cougar harvest, 1990 through 2010.



Statewide cougar pursuit statistics, 1979–2010.

Year	n	Permits	% pursuing cougars	% pursuers treeing cougars	Cougars treed / pursuit-day	Cougars treed / pursuer
1979	60	114	72	83	0.24	4.6
1980	19	91	68	92	0.17	1.6
1981	—	95	—	—	—	—
1982	63	96	87	78	0.40	3.3
1983	41	88	83	76	0.24	3.6
1984	90	126	81	82	0.35	6.2
1985	51	86	86	86	0.33	6.4
1986	49	90	98	90	0.37	6.1
1987	66	141	99	77	0.38	6.0
1988	99	147	89	90	0.38	8.0
1989	123	204	72	90	0.40	8.4
1990	282	355	92	88	0.41	7.8
1991	319	364	90	98	0.49	10.8
1992	364	524	80	96	0.45	4.3
1993	347	570	88	97	0.49	5.9
1994	279	552	87	97	0.57	9.4
1995	—	505	—	—	—	—
1996	378	627	78	98	0.48	10.5
1997	298	638	87	88	0.33	9.1
1998	236	635	86	91	0.36	11.0
1999	275	630	92	74	0.30	3.8
2000	222	545	86	68	0.28	3.1
2001	222	692	84	63	0.30	7.3
2002	—	681	—	—	0.21	—
2003	250	703	80	81	0.29	4.3
2004	199	772	83	73	0.23	3.1
2005	285	703	84	80	0.17	5.5
2006	252	730	88	85	0.19	6.6
2007	208	714	86	74	0.22	6.2
2008	256	880	86	80	0.27	7.4
2009	214	855	86	73	0.26	6.1
2010	224	900	81	73	0.24	4.9
Mean	199	464	85	83	6.3	0.33

\*In 1999, the combined cougar/bear pursuit permit was split into separate permits for each species.

Statewide cougar pursuit statistics by unit / subunit, Utah 2010.

Unit	n	Pursuers afield	Pursuer days afield	Males treed	Females treed	Kittens treed	Unknown treed	Total cougars treed	Cougars treed / day	Cougars treed / pursuer
Beaver	12	39	200	39	69	3	13	124	0.62	3.2
Book Cliffs, Bitter Creek	3	10	203	20	33	7	0	60	0.29	6.0
Book Cliffs, Rattlesnake Canyon	9	29	309	20	26	16	10	72	0.23	2.4
Box Elder, Desert	5	16	128	10	23	20	3	56	0.44	3.4
Box Elder, Pilot Mountain	0	—	—	—	—	—	—	—	—	—
Box Elder, Raft River	5	16	118	26	52	10	0	88	0.75	5.4
Cache	12	39	661	20	56	20	26	122	0.18	3.1
Central Mountains, Nebo	6	20	131	13	26	0	0	39	0.30	2.0
Central Mountains, Nebo-West Face	10	33	448	31	31	33	4	99	0.22	3.0
Central Mountains, Northeast Manti	14	46	626	49	52	0	0	101	0.16	2.2
Central Mountains, Northwest Manti	0	—	—	—	—	—	—	—	—	—
Central Mountains, Southeast Manti	5	16	118	10	7	0	0	17	0.14	1.0
Central Mountains, Southwest Manti	5	16	147	7	7	0	0	14	0.09	0.8
Chalk Creek/Kamas	11	36	573	29	29	16	3	77	0.14	2.2
East Canyon	1	3	23	0	3	0	0	3	0.14	1.0
East Canyon, Davis	19	62	1021	46	95	7	13	161	0.16	2.6
Fillmore, Oak Creek	11	36	422	49	59	20	7	135	0.32	3.7
Fillmore, Pahvant	8	26	262	3	10	0	0	13	0.05	0.5
Henry Mountains	5	16	183	10	0	0	0	10	0.05	0.6
Kaiparowits	4	13	79	7	7	0	7	21	0.25	1.5
La Sal Mountains	5	16	92	7	3	0	0	10	0.11	0.6
Monroe	7	23	255	26	52	10	13	101	0.40	4.4
Morgan-Rich	16	52	519	23	43	7	0	73	0.14	1.4
Mt. Dutton	8	26	229	36	36	0	16	88	0.39	3.4
Nine Mile	7	23	144	3	3	0	0	6	0.05	0.3
North Slope, Three Corners	6	20	272	16	23	13	0	52	0.19	2.7
North Slope, West Daggett/Summit	9	29	403	13	59	7	3	82	0.20	2.8
Ogden	3	10	29	0	3	0	0	3	0.11	0.3
Oquirrh-Stansbury	6	20	144	3	10	0	0	13	0.09	0.7
Panguitch Lake	8	26	360	20	46	10	0	76	0.21	2.9
Paunsaugunt	5	16	259	13	75	7	10	105	0.41	6.4

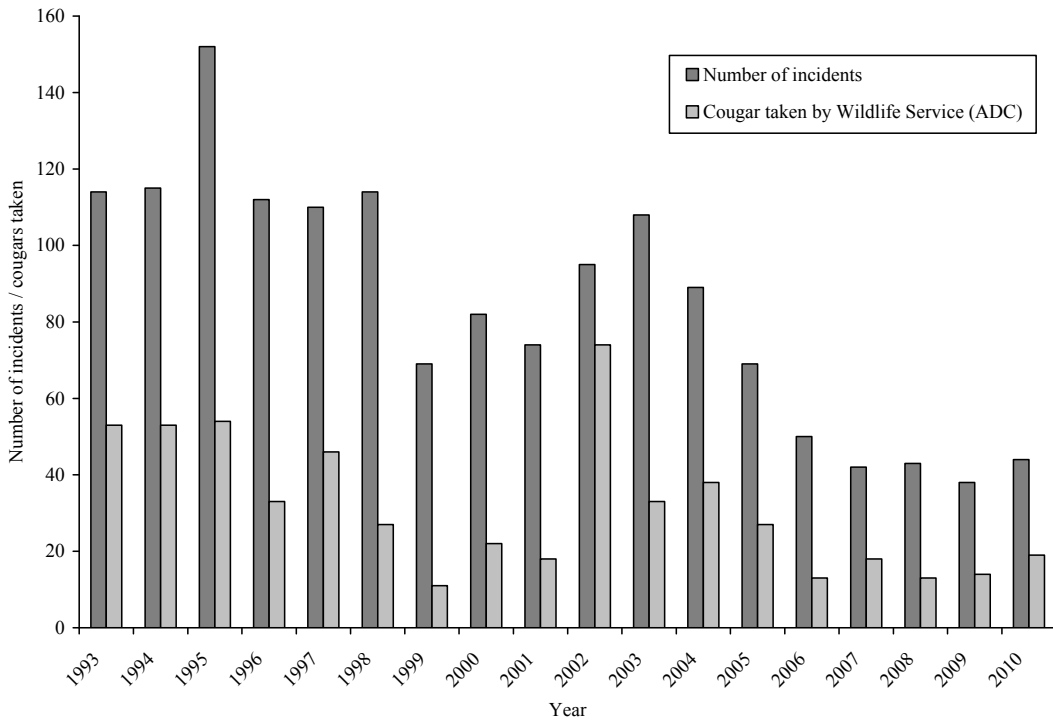
Statewide cougar pursuit statistics by unit / subunit, Utah 2010 (cont.).

Unit	n	Pursuers afield	Pursuer days afield	Males treed	Females treed	Kittens treed	Unknown treed	Total cougars treed	Cougars treed / day	Cougars treed / pursuer
Pine Valley	9	29	337	10	26	7	0	43	0.13	1.4
Plateau, Boulder	1	3	7	0	0	0	0	0	0.00	0.0
Plateau, Fishlake	5	16	39	7	26	0	0	33	0.83	2.0
Plateau, Thousand Lakes	8	26	219	13	16	0	0	29	0.13	1.1
San Juan, Abajo	12	39	396	33	69	26	20	148	0.37	3.8
San Juan, Elk Ridge	24	79	895	62	111	26	38	237	0.27	3.0
San Rafael	19	62	958	56	75	3	7	141	0.15	2.3
South Slope, Vernal/Bonanza/Diamond Mtn	6	20	147	23	56	13	7	99	0.67	5.0
South Slope, Yellowstone	1	3	26	0	7	0	0	7	0.25	2.0
Southwest Desert	6	20	334	147	124	13	33	317	0.95	16.2
Wasatch Mountains, Avintaquin	14	46	769	85	137	43	29	294	0.38	6.4
Wasatch Mountains, Cascade	5	16	226	39	20	7	13	79	0.35	4.8
Wasatch Mountains, Currant Creek	0	—	—	—	—	—	—	—	—	—
Wasatch Mountains, Timpanogos	9	29	429	33	20	16	16	85	0.20	2.9
Wasatch Mountains, West	1	3	7	0	0	0	0	0	0.00	0.0
West Desert, Mountain Ranges	10	33	573	26	33	0	0	59	0.10	1.8
West Desert, Tintic-Vernon	14	46	583	16	59	0	0	75	0.13	1.6
Zion	11	36	419	16	26	3	0	45	0.11	1.3
Unknown	5	16	265	29	33	7	3	72	0.27	4.4
Statewide	224	733	14984	1144	1775	367	293	3579	0.24	4.9

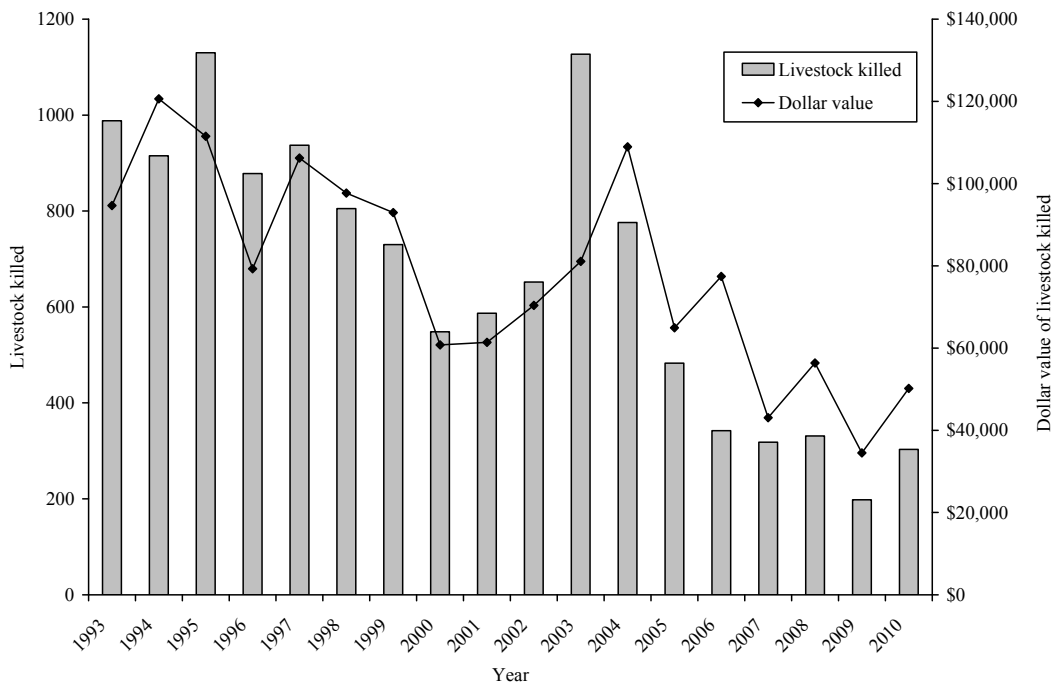
Totals for sample size and pursuers afield are not the sum of the columns because pursuers could pursue on multiple units.



Number of livestock depredation incidents and cougars taken by Wildlife Services, Utah 1993–2010.



Livestock losses due to cougar depredation, Utah 1993–2010.



## **APPENDIX**

### **HISTORIC COUGAR HARVEST BY HUNT UNIT**

Total cougar mortality for unit 1a – Box Elder, Raft River, Utah 1997–2010.

Year	Limited entry permits*	Harvest objective quota**	Sport male harvest	Sport female harvest	Total sport harvest	Mean age	% permits filled	% quota filled	% females	% ≥ 6 yrs old	Cougar treed / day	Wildlife services harvest	Other mortality	Total harvest + mortality	Non-hunt males	Non-hunt females
1997	8		3	3	6	3.3	75		50	7		1	0	7		
1998	5		2	2	4	3.5	80		50	33	0.55	0	1	5		
1999	5		1	2	3	2.3	60		67	0	0.35	2	0	5		
2000		8	5	3	8	3.2		100	38	12	0.29	0	0	8		
2001		8	3	3	6	2.6		75	50	0	0.46	0	1	7		
2002	6		4	0	4	2.8	67		0	0	0.52	0	0	4	0	0
2003	6		2	3	5	3.0	83		60	0	0.30	1	0	6	1	0
2004		10	6	4	10	2.8		100	40	0	0.14	0	0	10	0	0
2005		10	4	4	8	2.0		80	50	0	0.11	0	0	8	0	0
2006	8		3	1	4	3.0	50		25	0	0.06	0	0	4	0	0
2007	6		0	1	1	10.0	17		100	100	0.16	0	0	1	0	0
2008	6		2	0	2	4.0	33		0	0	0.17	0	0	2	0	0
2009	7		3	1	4	2.8	57		25	0	0.46	0	0	4	0	0
2010	6		4	0	4	2.8	67		0	0	0.75	0	1	5	0	1
Mean	6	9	3	2	5	3.4	59	89	39	11	0.33	0	0	5	0	0

\*Permits include all limited entry, conservation and convention permits.

\*\*Harvest quota in limited entry units during the harvest quota season are the total number of limited entry permits minus the number of cougars harvested during the limited entry season  
Other mortality includes DWR control, roadkill, poaching, found dead, etc.

Total cougar mortality for unit 1b – Box Elder, Desert, Utah 1990–2010.

Year	Limited entry permits*	Harvest objective quota**	Sport male harvest	Sport female harvest	Total sport harvest	Mean age	% permits filled	% quota filled	% females	% ≥ 6 yrs old	Cougar treed / day	Wildlife services harvest	Other mortality	Total harvest + mortality	Non-hunt males	Non-hunt females
1990	14		1	1	2		14		50			0	0	2		
1991	14		4	1	5		36		20			0	0	5		
1992	14		1	2	3		21		67			0	0	3		
1993	9		1	1	2		22		50			0	0	2		
1994	9		3	1	4		44		25			0	0	4		
1995	9		7	1	8		89		13			0	0	8		
1996	12		4	1	5	3.0	42		20			0	1	6		
1997	8		4	3	7	3.5	88		43	7		1	1	9		
1998	8		2	3	5	5.3	63		60	33	0.55	0	0	5		
1999	8		1	4	5	2.3	63		80	0	0.35	0	0	5		
2000		12	7	4	11	3.2		92	36	12	0.29	0	0	11		
2001		12	8	7	15	2.4		125	47	13	0.47	4	1	20		
2002		9	1	3	4	4.0		44	75	25	0.29	0	0	4	0	0
2003	12		4	2	6	5.8	50		33	50	0.46	0	1	7	0	0
2004	1	18	5	6	11	4.4		61	55	38	0.17	0	2	13	0	1
2005		18	3	3	6	3.6		33	50	0	0.13	1	0	7	0	0
2006	18		1	2	3	3.3	17		67	0	0.03	0	1	4	1	0
2007	12		3	2	5	2.3	42		40	0	0.27	0	2	7	2	0
2008	12		1	3	4	1.8	33		75	0	0.13	0	0	4	0	0
2009	10		0	1	1	2.0	10		100	0	0.28	0	0	1	0	0
2010	5		0	2	2	4.0	40		100	50	0.44	0	0	2	0	0
Mean	10	14	3	3	5	3.4	42	71	53	16	0.30	0	0	6	0	0

\*Permits include all limited entry, conservation and convention permits.

\*\*Harvest quota in limited entry units during the harvest quota season are the total number of limited entry permits minus the number of cougars harvested during the limited entry season  
Other mortality includes DWR control, roadkill, poaching, found dead, etc.

Total cougar mortality for unit 1c – Box Elder, Pilot Mountain, Utah 1998–2010.

Year	Limited entry permits*	Harvest objective quota**	Sport male harvest	Sport female harvest	Total sport harvest	Mean age	% permits filled	% quota filled	% females	% ≥ 6 yrs old	Cougar treed / day	Wildlife services harvest	Other mortality	Total harvest + mortality	Non-hunt males	Non-hunt females
1998	6	3	0	0	0		0	0				0	0	0		
1999		3	1	0	1			33	0			0	0	1		
2000		3	0	0	0			0				0	0	0		
2001		3	0	0	0			0				0	0	0		
2002		4	1	2	3	4.5		75	67	0	0.00	0	0	3	0	0
2003		4	1	1	2			50	50	0	0.17	0	0	2	0	0
2004		4	1	0	1			25	0	0	0.25	0	0	1	0	0
2005		4	2	0	2	3.0		50	0	0	0.22	0	0	2	0	0
2006		4	0	0	0			0			0.00	0	0	0	0	0
2007		4	0	0	0			0			0.00	0	0	0	0	0
2008		4	0	0	0			0				0	0	0	0	0
2009		2	0	1	1	2.0		50	100	0		0	0	1	0	0
2010		2	0	0	0			0				0	0	0	0	0
Mean	6	3	0	0	1	3.2	0	22	36	0	0.11	0	0	1	0	0

\*Permits include all limited entry, conservation and convention permits.

\*\*Harvest quota in limited entry units during the harvest quota season are the total number of limited entry permits minus the number of cougars harvested during the limited entry season  
Other mortality includes DWR control, roadkill, poaching, found dead, etc.

Total cougar mortality for unit 2 – Cache, Utah 1996–2010.

Year	Limited entry permits*	Harvest objective quota**	Sport male harvest	Sport female harvest	Total sport harvest	Mean age	% permits filled	% quota filled	% females	% ≥ 6 yrs old	Cougar treed / day	Wildlife services harvest	Other mortality	Total harvest + mortality	Non-hunt males	Non-hunt females
1996	20		10	6	16	4.0	80		38	29		3	1	20		
1997	20		8	6	14	3.6	70		43	25		2	1	17		
1998	19		8	3	11	3.5	58		27	17	0.47	0	1	12		
1999	28		7	11	18	1.9	64		61	0	0.41	0	1	19		
2000		35	17	19	36	2.5		103	53	9	0.21	2	0	38		
2001		35	15	12	27	2.4		77	44	4	0.26	0	2	29		
2002		12	2	4	6	2.0		50	67	0	0.07	1	1	8	1	0
2003	15	10	4	11	15	2.0	53	70	73	0	0.46	0	0	15	0	0
2004		19	9	6	15	2.8		79	40	0	0.06	0	1	16	1	0
2005		19	8	4	12	1.4		63	33	0	0.08	0	1	13	1	0
2006	19		3	5	8	1.4	42		63	0	0.15	0	2	10	0	2
2007	14		2	6	8	2.1	57		75	0	0.26	0	0	8	0	0
2008	14		7	3	10	2.3	71		30	0	0.08	1	1	12	1	0
2009	14		7	5	12	3.2	86		42	9	0.23	0	5	17	1	4
2010	14		4	6	10	4.1	71		60	13	0.16	0	1	11	0	1
Mean	18	22	7	7	15	2.6	65	74	50	7	0.22	1	1	16	1	1

\*Permits include all limited entry, conservation and convention permits.

\*\*Harvest quota in limited entry units during the harvest quota season are the total number of limited entry permits minus the number of cougars harvested during the limited entry season  
Other mortality includes DWR control, roadkill, poaching, found dead, etc.

Total cougar mortality for unit 3 – Ogden, Utah 1996–2010.

Year	Limited entry permits*	Harvest objective quota**	Sport male harvest	Sport female harvest	Total sport harvest	Mean age	% permits filled	% quota filled	% females	% ≥ 6 yrs old	Cougar treed / day	Wildlife services harvest	Other mortality	Total harvest + mortality	Non-hunt males	Non-hunt females
1996	12		3	5	8	4.0	67		63	25		3	1	12		
1997	18		6	4	10	2.9	56		40	13		0	0	10		
1998	12		3	5	8	4.1	67		63	25	0.35	0	0	8		
1999	10		3	3	6	3.0	60		50	20	0.18	0	0	6		
2000	10		3	4	7	2.3	70		57	14	0.29	0	0	7		
2001		7	6	2	8	2.5		114	25	17	0.56	1	2	11		
2002		7	2	3	5	4.3		71	60	25	0.18	0	0	5	0	0
2003	12		5	3	8	4.0	67		38	0		0	0	8	0	0
2004		19	6	13	19	2.3		100	68	0	0.23	0	3	22	2	1
2005		19	1	6	7	2.6		37	86	14	0.07	0	0	7	0	0
2006	19		4	2	6	1.6	32		33	0	0.17	0	0	6	0	0
2007	14		5	4	9	2.9	64		44	14	0.28	0	0	9	0	0
2008	14		2	3	5	2.2	36		60	0	0.08	0	2	7	1	1
2009	14		4	3	7	2.5	50		43	0	0.14	0	0	7	1	0
2010	11		6	1	7	2.3	55		14	0	0.14	0	0	7	0	0
Mean	13	13	4	4	8	2.9	57	81	50	11	0.22	0	1	9	0	0

\*Permits include all limited entry, conservation and convention permits.

\*\*Harvest quota in limited entry units during the harvest quota season are the total number of limited entry permits minus the number of cougars harvested during the limited entry season  
Other mortality includes DWR control, roadkill, poaching, found dead, etc.

Total cougar mortality for unit 4 – Morgan-Rich, Utah 1990–2010.

Year	Limited entry permits*	Harvest objective quota**	Sport male harvest	Sport female harvest	Total sport harvest	Mean age	% permits filled	% quota filled	% females	% ≥ 6 yrs old	Cougar treed / day	Wildlife services harvest	Other mortality	Total harvest + mortality	Non-hunt males	Non-hunt females
1990	13		0	0	0		0					0	0	0		
1991	13		0	0	0		0					0	0	0		
1992	13		0	0	0		0					0	0	0		
1993	13		0	0	0		0					0	0	0		
1994	14		0	0	0		0					0	0	0		
1995	14		0	0	0		0					0	0	0		
1996	7		3	2	5	2.5	71		40	0		3	1	9		
1997	7		2	2	4	4.5	57		50	0		0	0	4		
1998	7		1	2	3	2.5	43		67	0	0.42	1	1	5		
1999	8		3	3	6	3.6	75		50	40	0.61	0	0	6		
2000	12		6	4	10	1.6	83		40	0	0.44	0	0	10		
2001		10	8	8	16	3.3		160	50	20	0.63	0	0	16		
2002		12	4	5	9	2.9		75	56	13	0.30	0	2	11	0	2
2003	16		7	5	12	2.5	75		42	0	0.48	0	0	12	0	0
2004	16		7	4	11	3.0	69		36	11	0.26	2	1	14	1	2
2005	16		4	6	10	2.3	63		60	11	0.28	1	0	11	0	0
2006	11		5	6	11	3.3	100		55	10	0.27	0	0	11	0	0
2007	8		3	1	4	3.0	50		25	0	0.23	1	0	5	1	0
2008	8		2	1	3	2.0	38		33	0	0.28	0	0	3	0	0
2009	5		2	1	3	2.0	60		33	0	0.35	1	1	5	1	1
2010	6		3	1	4	2.8	67		25	0	0.20	0	0	4	0	0
Mean	11	11	3	2	5	2.8	45	118	44	7	0.37	0	0	6	0	1

\*Permits include all limited entry, conservation and convention permits.

\*\*Harvest quota in limited entry units during the harvest quota season are the total number of limited entry permits minus the number of cougars harvested during the limited entry season  
Other mortality includes DWR control, roadkill, poaching, found dead, etc.



Total cougar mortality for unit 5 – East Canyon, Utah 1996–2010.

Year	Limited entry permits*	Harvest objective quota**	Sport male harvest	Sport female harvest	Total sport harvest	Mean age	% permits filled	% quota filled	% females	% ≥ 6 yrs old	Cougar treed / day	Wildlife services harvest	Other mortality	Total harvest + mortality	Non-hunt males	Non-hunt females
1996	8		4	1	5	3.7	63		20	0		0	0	5		
1997	18		6	7	13	2.5	72		54	9		0	3	16		
1998	22		7	9	16	2.6	73		56	6	0.30	0	3	19		
1999	16		6	4	10	1.3	63		40	0	0.39	0	0	10		
2000	18		3	6	9	2.3	50		67	0	0.00	0	1	10		
2001	2	10	4	6	10	2.1	0	100	60	0	0.40	0	0	10		
2002		7	4	4	8	2.3		114	50	0	0.25	0	0	8	0	0
2003	10		3	3	6	2.5	60		50	0	0.17	0	0	6	0	0
2004	9		1	3	4	3.0	44		75	0	0.08	0	0	4	0	0
2005	10		3	4	7	2.1	70		57	0	0.14	0	1	8	1	1
2006	8		2	2	4	3.0	50		50	33	0.07	1	0	5	0	1
2007	7		1	1	2	2.0	29		50	0	0.79	0	2	4	1	1
2008	5		2	0	2	2.0	40		0	0	0.09	0	0	2	0	0
2009	5		0	0	0		0				0.00	0	1	1	1	0
2010	2		1	0	1	5.0	50		0	0	0.19	0	0	1	0	0
Mean	10	9	3	3	6	2.6	47	107	45	3	0.22	0	1	7	0	0

\*Permits include all limited entry, conservation and convention permits.

\*\*Harvest quota in limited entry units during the harvest quota season are the total number of limited entry permits minus the number of cougars harvested during the limited entry season  
Other mortality includes DWR control, roadkill, poaching, found dead, etc.

Total cougar mortality for unit 5a – East Canyon, Davis, Utah 2002–2010.

Year	Limited entry permits*	Harvest objective quota**	Sport male harvest	Sport female harvest	Total sport harvest	Mean age	% permits filled	% quota filled	% females	% ≥ 6 yrs old	Cougar treed / day	Wildlife services harvest	Other mortality	Total harvest + mortality	Non-hunt males	Non-hunt females
2002	2		2	0	2	1.5	100		0	0		0	0	2	0	0
2003	2		1	1	2	2.0	100		50	0		0	0	2	0	0
2004	2		1	1	2	2.0	100		50	0		0	0	2	0	0
2005	4		1	0	1	3.0	25		0	0	0.32	0	0	1	0	0
2006		4	1	3	4	2.0		100	75	0	0.05	0	1	5	1	0
2007		5	0	1	1	9.0		20	100	100	0.10	0	0	1	0	0
2008		5	0	0	0			0			0.03	0	0	0	0	0
2009		5	2	0	2	3.5		40	0	0	0.00	0	0	2	0	0
2010		5	2	2	4	4.0		80	50	0	0.25	0	0	4	0	0
Mean	3	5	1	1	2	3.4	81	48	41	13	0.13	0	0	2	0	0

\*Permits include all limited entry, conservation and convention permits.

\*\*Harvest quota in limited entry units during the harvest quota season are the total number of limited entry permits minus the number of cougars harvested during the limited entry season  
Other mortality includes DWR control, roadkill, poaching, found dead, etc.

Total cougar mortality for unit 6/7 – Chalk Creek/Kamas, Utah 1996–2010.

Year	Limited entry permits*	Harvest objective quota**	Sport male harvest	Sport female harvest	Total sport harvest	Mean age	% permits filled	% quota filled	% females	% ≥ 6 yrs old	Cougar treed / day	Wildlife services harvest	Other mortality	Total harvest + mortality	Non-hunt males	Non-hunt females
1996	10		4	3	7	6.0	70		43	100		1	0	8		
1997	10		2	4	6	3.3	60		67	0		0	1	7		
1998	10		4	4	8	2.2	80		50	0	0.39	0	3	11		
1999	14		7	5	12	2.6	86		42	11	0.31	0	0	12		
2000		12	8	4	12	2.5		100	33	9	0.57	0	0	12		
2001		12	3	6	9	3.9		75	67	25	0.62	1	0	10		
2002		12	6	5	11	3.2		92	45	18	0.47	6	1	18	2	5
2003	17		8	7	15	2.7	88		47	0	0.60	17	2	34	6	12
2004	12		7	3	10	2.6	83		30	14	0.33	3	0	13	1	0
2005	11		5	3	8	2.6	73		38	0	0.44	14	1	23	6	2
2006	10		5	4	9	2.2	90		44	0	0.23	12	0	21	3	7
2007	11		4	6	10	3.0	91		60	13	0.64	1	0	11	1	0
2008	8		4	5	9	3.4	75		56	13	0.31	1	0	10	1	0
2009	8		7	4	11	3.1	100		36	0	0.30	1	2	14	0	3
2010	5		4	4	8	2.3	80		50	0	0.67	7	3	18	6	4
Mean	11	12	5	4	10	3.0	81	89	47	14	0.45	4	1	15	3	4

\*Permits include all limited entry, conservation and convention permits.

\*\*Harvest quota in limited entry units during the harvest quota season are the total number of limited entry permits minus the number of cougars harvested during the limited entry season  
Other mortality includes DWR control, roadkill, poaching, found dead, etc.

Total cougar mortality for unit 8 – North Slope, Utah 1996–2002.

Year	Limited entry permits*	Harvest objective quota**	Sport male harvest	Sport female harvest	Total sport harvest	Mean age	% permits filled	% quota filled	% females	% ≥ 6 yrs old	Cougar treed / day	Wildlife services harvest	Other mortality	Total harvest + mortality	Non-hunt males	Non-hunt females
1996	12		2	2	4	6.5	33		50	75		0	1	5		
1997	3	12	9	3	12	3.8			25	23		0	1	13		
1998	2	12	4	4	8	4.9			50	25	0.39	0	0	8		
1999	2	12	5	1	6	3.8			17	17	0.31	0	0	6		
2000		12	6	5	11	3.8		92	45	17	0.57	0	0	11		
2001		14	8	6	14	3.2		100	43	8	0.32	0	0	14		
2002		14	9	6	15	3.6		107	40	7	0.35	0	0	15	0	0
Mean	5	13	6	4	10	4.2	33	100	39	25	0.39	0	0	10	0	0

\*Permits include all limited entry, conservation and convention permits.

\*\*Harvest quota in limited entry units during the harvest quota season are the total number of limited entry permits minus the number of cougars harvested during the limited entry season  
Other mortality includes DWR control, roadkill, poaching, found dead, etc.

Total cougar mortality for unit 8ab – North Slope, West Daggett/Summit, Utah 2003–2010.

Year	Limited entry permits*	Harvest objective quota**	Sport male harvest	Sport female harvest	Total sport harvest	Mean age	% permits filled	% quota filled	% females	% ≥ 6 yrs old	Cougar treed / day	Wildlife services harvest	Other mortality	Total harvest + mortality	Non-hunt males	Non-hunt females
2003		10	4	3	7	4.0		70	43	40	0.18	0	0	7	0	0
2004		10	3	4	7	3.0		70	57	0	0.29	1	0	8	0	1
2005		10	1	2	3	2.0		30	67	0	0.07	0	0	3	0	0
2006		10	1	2	3	3.0		30	67	0	0.30	0	0	3	0	0
2007		7	1	0	1	3.0		14	0	0	0.18	0	0	1	0	0
2008		5	1	1	2	2.0		40	50	0	0.29	0	0	2	0	0
2009		10	5	4	9	2.0		90	44	0	0.00	0	0	9	0	0
2010	10		3	0	3	2.3	30		0	0	0.29	0	0	3	0	0
Mean	10	9	2	2	4	2.7	30	49	41	5	0.20	0	0	5	0	0

\*Permits include all limited entry, conservation and convention permits.

\*\*Harvest quota in limited entry units during the harvest quota season are the total number of limited entry permits minus the number of cougars harvested during the limited entry season  
Other mortality includes DWR control, roadkill, poaching, found dead, etc.

Total cougar mortality for unit 8c – North Slope, Three Corners, Utah 2003–2010.

Year	Limited entry permits*	Harvest objective quota**	Sport male harvest	Sport female harvest	Total sport harvest	Mean age	% permits filled	% quota filled	% females	% ≥ 6 yrs old	Cougar treed / day	Wildlife services harvest	Other mortality	Total harvest + mortality	Non-hunt males	Non-hunt females
2003		10	1	2	3	3.5		30	67	0		1	0	4	1	0
2004		10	1	1	2	4.5		20	50	50	0.20	0	0	2	0	0
2005		10	1	1	2	2.0		20	50	0	0.03	1	0	3	0	1
2006		10	1	1	2	2.5		20	50	0	0.00	0	0	2	0	0
2007		7	4	0	4	3.0		57	0	0	0.37	0	0	4	0	0
2008		5	2	2	4	2.8		80	50	0	0.41	0	0	4	0	0
2009		10	1	0	1	3.0		10	0	0	0.72	0	0	1	0	0
2010	7		1	0	1	2.0	14		0	0	0.23	0	0	1	0	0
Mean	7	9	2	1	2	2.9	14	34	33	6	0.28	0	0	3	0	0

\*Permits include all limited entry, conservation and convention permits.

\*\*Harvest quota in limited entry units during the harvest quota season are the total number of limited entry permits minus the number of cougars harvested during the limited entry season  
Other mortality includes DWR control, roadkill, poaching, found dead, etc.

Total cougar mortality for unit 9 – South Slope, Utah 1990–2001.

Year	Limited entry permits*	Harvest objective quota**	Sport male harvest	Sport female harvest	Total sport harvest	Mean age	% permits filled	% quota filled	% females	% ≥ 6 yrs old	Cougar treed / day	Wildlife services harvest	Other mortality	Total harvest + mortality	Non-hunt males	Non-hunt females
1990	56		13	7	20		36		35			4	0	24		
1991	56		18	12	30		54		40			0	1	31		
1992	56		13	15	28		50		54			1	1	30		
1993	57		14	14	28		49		50			2	0	30		
1994	60		22	10	32		53		31			0	2	34		
1995	63		24	10	34		54		29			1	2	37		
1996	75		27	13	40	4.4	53		33	32		0	2	42		
1997	62		12	9	21	3.6	34		43	11		1	1	23		
1998	40		8	7	15	3.1	38		47	8	0.29	6	0	21		
1999	35		4	6	10	3.4	29		60	9	0.26	1	0	11		
2000	35		4	1	5	3.2	14		20	0	0.26	1	1	7		
2001	35		7	6	13	4.2	37		46	23	0.31	0	1	14		
Mean	53		14	9	23	3.7	42		41	14	0.28	1	1	25		

\*Permits include all limited entry, conservation and convention permits.

\*\*Harvest quota in limited entry units during the harvest quota season are the total number of limited entry permits minus the number of cougars harvested during the limited entry season  
Other mortality includes DWR control, roadkill, poaching, found dead, etc.

Total cougar mortality for unit 9a – South Slope, Yellowstone, Utah 2002–2010.

Year	Limited entry permits*	Harvest objective quota**	Sport male harvest	Sport female harvest	Total sport harvest	Mean age	% permits filled	% quota filled	% females	% ≥ 6 yrs old	Cougar treed / day	Wildlife services harvest	Other mortality	Total harvest + mortality	Non-hunt males	Non-hunt females
2002	8		1	1	2	3.0	25		50	22	0.14	2	0	4	2	0
2003	8		2	1	3	5.3	38		33	33	0.24	0	0	3	0	0
2004		10	1	5	6	2.5		60	83	0	0.11	0	0	6	0	0
2005		10	1	0	1	2.0		10	0	0	0.18	0	0	1	0	0
2006	10		2	0	2	3.5	20		0	0	0.05	0	0	2	0	0
2007		6	4	0	4	2.0		67	0	0	0.19	0	0	4	0	0
2008		6	3	0	3	2.7		50	0	0	0.12	1	1	5	2	0
2009		6	4	0	4	3.5		67	0	25	0.16	0	1	5	0	1
2010		6	5	1	6	2.3		100	17	0	0.05	0	1	7	1	0
Mean	9	7	3	1	3	3.0	28	59	20	9	0.14	0	0	4	1	0

\*Permits include all limited entry, conservation and convention permits.

\*\*Harvest quota in limited entry units during the harvest quota season are the total number of limited entry permits minus the number of cougars harvested during the limited entry season  
Other mortality includes DWR control, roadkill, poaching, found dead, etc.



Total cougar mortality for unit 9bcd – South Slope, Vernal/Diamond/Bonanza, Utah 2002–2010.

Year	Limited entry permits*	Harvest objective quota**	Sport male harvest	Sport female harvest	Total sport harvest	Mean age	% permits filled	% quota filled	% females	% ≥ 6 yrs old	Cougar treed / day	Wildlife services harvest	Other mortality	Total harvest + mortality	Non-hunt males	Non-hunt females
2002	26		7	3	10	3.7	38		30	20	0.06	2	0	12	1	1
2003	25		5	4	9	5.0	36		44	40	0.20	3	2	14	1	4
2004		9	3	6	9	2.7		100	67	0		0	0	9	0	0
2005		20	5	4	9	1.8		45	44	0	0.03	0	0	9	0	0
2006		20	6	5	11	2.8		55	45	9	0.12	2	0	13	0	2
2007		20	7	1	8	4.0		40	13	20	0.24	0	0	8	0	0
2008		15	8	5	13	3.2		87	38	8	0.50			13		
2009		15	7	3	10	3.1		67	30	13	0.56	0	0	10	0	0
2010		15	13	3	16	2.8		107	19	8	0.15	0	1	17	0	1
Mean	26	16	7	4	11	3.2	37	71	37	13	0.23	1	0	12	0	1

\*Permits include all limited entry, conservation and convention permits.

\*\*Harvest quota in limited entry units during the harvest quota season are the total number of limited entry permits minus the number of cougars harvested during the limited entry season  
Other mortality includes DWR control, roadkill, poaching, found dead, etc.

Total cougar mortality for unit 10 – Book Cliffs, Utah 1990–2002.

Year	Limited entry permits*	Harvest objective quota**	Sport male harvest	Sport female harvest	Total sport harvest	Mean age	% permits filled	% quota filled	% females	% ≥ 6 yrs old	Cougar treed / day	Wildlife services harvest	Other mortality	Total harvest + mortality	Non-hunt males	Non-hunt females
1990	18		5	4	9		50		44			2	0	11		
1991	18		11	2	13		72		15			0	1	14		
1992	18		2	4	6		33		67			4	0	10		
1993	18		11	1	12		67		8			1	0	13		
1994	22		8	3	11		50		27			0	0	11		
1995	26		10	4	14		54		29			1	1	16		
1996	40		11	7	18	4.2	45		39	18		0	1	19		
1997		30	14	14	28	4.5		93	50	37		3	0	31		
1998		30	12	9	21	4.4		70	43	21	0.38	0	1	22		
1999		30	12	9	21	3.7		70	43	11	0.19	1	1	23		
2000		30	11	10	21	2.9		70	48	6	0.19	0	1	22		
2001		30	10	13	23	3.6		77	57	13	0.19	0	0	23		
2002		30	14	8	22	3.3		73	36	20	0.25	1	0	23	0	1
Mean	23	30	10	7	17	3.8	53	76	39	18	0.24	1	0	18	0	1

\*Permits include all limited entry, conservation and convention permits.

\*\*Harvest quota in limited entry units during the harvest quota season are the total number of limited entry permits minus the number of cougars harvested during the limited entry season  
Other mortality includes DWR control, roadkill, poaching, found dead, etc.

Total cougar mortality for unit 10a – Book Cliffs, Bitter Creek, Utah 2003–2010.

Year	Limited entry permits*	Harvest objective quota**	Sport male harvest	Sport female harvest	Total sport harvest	Mean age	% permits filled	% quota filled	% females	% ≥ 6 yrs old	Cougar treed / day	Wildlife services harvest	Other mortality	Total harvest + mortality	Non-hunt males	Non-hunt females
2003		30	14	5	19	4.2		63	26	33	0.21	0	0	19	0	0
2004		30	10	6	16	2.9		53	38	8	0.25	2	0	18	0	2
2005		30	4	1	5	1.7		17	20	0	0.13	1	0	6	0	2
2006	20		7	1	8	2.7	40		13	0	0.14	3	1	12	0	2
2007	13		3	1	4	1.0	31		25	0	0.27	0	0	4	0	0
2008	14		8	2	10	3.3	71		20	14	0.30	0	0	10	0	0
2009	14		11	3	14	3.1	100		21	9	0.19	0	0	14	0	0
2010	15		7	3	10	3.7	60		30	11	0.22	0	0	10	0	0
Mean	15	30	8	3	11	2.8	60	44	24	9	0.21	1	0	12	0	1

\*Permits include all limited entry, conservation and convention permits.

\*\*Harvest quota in limited entry units during the harvest quota season are the total number of limited entry permits minus the number of cougars harvested during the limited entry season  
Other mortality includes DWR control, roadkill, poaching, found dead, etc.

Total cougar mortality for unit 10b – Book Cliffs, Rattlesnake Canyon, Utah 2003–2010.

Year	Limited entry permits*	Harvest objective quota**	Sport male harvest	Sport female harvest	Total sport harvest	Mean age	% permits filled	% quota filled	% females	% ≥ 6 yrs old	Cougar treed / day	Wildlife services harvest	Other mortality	Total harvest + mortality	Non-hunt males	Non-hunt females
2003		4	0	0	0			0				3	0	3	1	1
2004		4	1	1	2	4.5		50	50	50		0	0	2	0	0
2005		4	1	0	1			25	0		0.04	0	0	1	0	0
2006		4	0	0	0			0			0.00	3	0	3	2	0
2007		4	0	0	0			0			0.00	0	0	0	0	0
2008		4	0	0	0			0			0.05	0	0	0	0	0
2009		4	1	0	1	4.0		25%	0%	0%	0.18	0	0	1	0	0
2010		4	0	0	0			0%				0	1	1	1	0
Mean		4	0	0	1	4.3		13%	17%	25%	0.05	1	0	1	1	0

\*Permits include all limited entry, conservation and convention permits.

\*\*Harvest quota in limited entry units during the harvest quota season are the total number of limited entry permits minus the number of cougars harvested during the limited entry season  
Other mortality includes DWR control, roadkill, poaching, found dead, etc.

Total cougar mortality for unit 11a – Nine Mile, Anthro, Utah 1990–2007.

Year	Limited entry permits*	Harvest objective quota**	Sport male harvest	Sport female harvest	Total sport harvest	Mean age	% permits filled	% quota filled	% females	% ≥ 6 yrs old	Cougar treed / day	Wildlife services harvest	Other mortality	Total harvest + mortality	Non-hunt males	Non-hunt females
1990	12		4	0	4		33		0			2	0	6		
1991	12		5	3	8		67		38			0	0	8		
1992	12		2	2	4		33		50			0	1	5		
1993	12		3	3	6		50		50			0	2	8		
1994	13		4	1	5		38		20			1	0	6		
1995	13		5	4	9		69		44			1	2	12		
1996	13		3	1	4	5.0	31		25	44		0	0	4		
1997	13		2	3	5	3.8	38		60	20		0	0	5		
1998	5		1	1	2	3.0	40		50	13	0.41	0	0	2		
1999	5		1	0	1	2.9	20		0	0	0.25	0	0	1		
2000	5		2	2	4	3.4	80		50	13	0.24	0	0	4		
2001		6	2	1	3	3.7		50	33	0	0.43	0	1	4		
2002		5	3	2	5	3.8		100	40	25	0.16	0	0	5	0	0
2003		5	1	1	2	5.0		40	50	0	0.02	0	1	3	1	0
2004		5	2	0	2	4.5		40	0	50	0.10	0	0	2	0	0
2005		5	1	0	1			20	0		0.03	0	0	1	0	0
2006	5		0	0	0		0				0.06	0	0	0	0	0
2007	3		0	2	2	3.0	67		100	0	0.33	0	0	2	0	0
Mean	9	5	2	1	4	3.8	44	50	36	17	0.20	0	0	4	0	0

\*Permits include all limited entry, conservation and convention permits.

\*\*Harvest quota in limited entry units during the harvest quota season are the total number of limited entry permits minus the number of cougars harvested during the limited entry season  
Other mortality includes DWR control, roadkill, poaching, found dead, etc.

Total cougar mortality for unit 11bc – Nine Mile, Range Creek, Utah 1990–2007.

Year	Limited entry permits*	Harvest objective quota**	Sport male harvest	Sport female harvest	Total sport harvest	Mean age	% permits filled	% quota filled	% females	% ≥ 6 yrs old	Cougar treed / day	Wildlife services harvest	Other mortality	Total harvest + mortality	Non-hunt males	Non-hunt females
1990	16		5	3	8		50		38			0	0	8		
1991	16		5	1	6		38		17			0	0	6		
1992	16		6	1	7		44		14			0	1	8		
1993	16		6	0	6		38		0			1	0	7		
1994	16		5	4	9		56		44			0	0	9		
1995	16		8	4	12		75		33			0	0	12		
1996	16		6	1	7	3.6	44		14	44		0	0	7		
1997		20	9	12	21	3.2		105	57	20		2	1	24		
1998		16	7	7	14	3.5		88	50	13	0.41	1	0	15		
1999		16	11	4	15	2.9		94	27	0	0.25	0	0	15		
2000		16	7	9	16	3.4		100	56	13	0.24	0	0	16		
2001		16	10	7	17	2.2		106	41	0	0.33	0	1	18		
2002		16	11	5	16	2.6		100	31	6	0.06	1	0	17	1	0
2003		12	9	6	15	2.4		125	40	0	0.11	0	0	15	0	0
2004		25	4	8	12	5.3		48	67	42	0.06	1	2	15	1	2
2005		30	4	3	7	2.4		23	43	0	0.14	0	0	7	0	0
2006		20	5	4	9	3.1		45	44	25	0.07	0	1	10	0	1
2007		15	4	2	6	3.4		40	33	20	0.09	0	0	6	0	0
Mean	16	18	7	5	11	3.2	49	79	36	15	0.18	0	0	12	0	0

\*Permits include all limited entry, conservation and convention permits.

\*\*Harvest quota in limited entry units during the harvest quota season are the total number of limited entry permits minus the number of cougars harvested during the limited entry season

Other mortality includes DWR control, roadkill, poaching, found dead, etc.

2003, 2004, and 2006 unit was called 11b, Nine Mile, Range Creek North.

Total cougar mortality for unit 11c – Nine Mile, Range Creek South, Utah 2003–2004.

Year	Limited entry permits*	Harvest objective quota**	Sport male harvest	Sport female harvest	Total sport harvest	Mean age	% permits filled	% quota filled	% females	% ≥ 6 yrs old	Cougar treed / day	Wildlife services harvest	Other mortality	Total harvest + mortality	Non-hunt males	Non-hunt females
2003		8	2	2	4	4.0		50	50	0	0.17	1	0	5	1	0
2004		10	2	3	5			50	60			0	0	5	1	1
Mean		9	2	3	5	4.0		50	55	0	0.17	1	0	5	1	1

\*Permits include all limited entry, conservation and convention permits.

\*\*Harvest quota in limited entry units during the harvest quota season are the total number of limited entry permits minus the number of cougars harvested during the limited entry season

Other mortality includes DWR control, roadkill, poaching, found dead, etc.

Unit was recombined with unit 11b in 2005.

Total cougar mortality for unit 11 – Nine Mile, Utah 2008–2010.

Year	Limited entry permits*	Harvest objective quota**	Sport male harvest	Sport female harvest	Total sport harvest	Mean age	% permits filled	% quota filled	% females	% ≥ 6 yrs old	Cougar treed / day	Wildlife services harvest	Other mortality	Total harvest + mortality	Non-hunt males	Non-hunt females
2008		12	4	4	8	2.0		67	50	0	0.06	1	0	9	0	1
2009		12	7	6	13	3.5		108	46	15	0.11	1	0	14	1	0
2010		12	9	3	12	3.1		100	25	0	0.16	0	0	12	0	0
Mean		12	7	4	11	2.9		92	40	5	0.11	1	0	12	0	0

\*Permits include all limited entry, conservation and convention permits.

\*\*Harvest quota in limited entry units during the harvest quota season are the total number of limited entry permits minus the number of cougars harvested during the limited entry season

Other mortality includes DWR control, roadkill, poaching, found dead, etc.

All subunits were recombined in 2008.

Total cougar mortality for unit 12 – San Rafael, Utah 1990–2010.

Year	Limited entry permits*	Harvest objective quota**	Sport male harvest	Sport female harvest	Total sport harvest	Mean age	% permits filled	% quota filled	% females	% ≥ 6 yrs old	Cougar treed / day	Wildlife services harvest	Other mortality	Total harvest + mortality	Non-hunt males	Non-hunt females
1990	4		0	0	0		0					0	0	0		
1991	4		1	0	1		25		0			0	0	1		
1992	4		0	0	0		0					0	0	0		
1993	4		0	0	0		0					0	0	0		
1994	4		1	0	1		25		0	0		0	0	1		
1995	4		0	0	0		0					0	0	0		
1996	4		1	0	1	1.0	25		0	0		0	0	1		
1997	4		0	0	0		0					0	0	0		
1998	0		0	0	0						0.34	0	1	1		
1999		2	2	0	2	5.5		100	0	50	0.19	0	0	2		
2000		7	0	0	0			0			0.21	1	1	2		
2001		7	1	2	3	7.0		43	67	100	0.60	2	1	6		
2002		7	0	0	0			0				2	0	2	0	2
2003		7	2	0	2	2.0		29	0	50	0.00	1	0	3	1	0
2004		7	2	1	3	2.0		43	33	0	0.25	0	0	3	0	0
2005		7	0	0	0			0			0.10	0	0	0	0	0
2006		5	0	0	0			0				0	0	0	0	0
2007		4	1	0	1			25	0		0.60	0	0	1	0	0
2008		4	0	1	1			25	100	0	0.05	0	1	2	1	0
2009		4	1	0	1	3.0		25	0	0	0.03	0	0	1	0	0
2010		4	1	0	1	2.0		25	0	0	0.09	0	0	1	0	0
Mean	4	5	1	0	1	3.2	9	26	18	22	0.22	0	0	1	0	0

\*Permits include all limited entry, conservation and convention permits.

\*\*Harvest quota in limited entry units during the harvest quota season are the total number of limited entry permits minus the number of cougars harvested during the limited entry season  
Other mortality includes DWR control, roadkill, poaching, found dead, etc.



Total cougar mortality for unit 13a – La Sal, La Sal Mountains, Utah 1990–2006.

Year	Limited entry permits*	Harvest objective quota**	Sport male harvest	Sport female harvest	Total sport harvest	Mean age	% permits filled	% quota filled	% females	% ≥ 6 yrs old	Cougar treed / day	Wildlife services harvest	Other mortality	Total harvest + mortality	Non-hunt males	Non-hunt females
1990	8		0	0	0		0					0	0	0		
1991	8		2	0	2		25		0			1	0	3		
1992	8		1	1	2		25		50			1	0	3		
1993	8		3	1	4		50		25			0	3	7		
1994	9		3	1	4		44		25			0	0	4		
1995	12		2	0	2		17		0			0	0	2		
1996	12		3	2	5	2.9	42		40	0		1	0	6		
1997		10	1	0	1	2.5		10	0	0		0	2	3		
1998		10	3	0	3	2.3		30	0	0	0.34	0	0	3		
1999		10	1	2	3	2.0		30	67	0	0.23	0	0	3		
2000		10	4	3	7	2.9		70	43	0	0.36	0	0	7		
2001		7	2	0	2	2.5		29	0	0	0.67	0	1	3		
2002		7	5	0	5	2.4		71	0	0	0.14	4	0	9	2	2
2003		7	3	3	6	4.3		86	50	33	0.36	0	0	6	0	0
2004		15	3	0	3	2.5		20	0	0	0.10	4	0	7	2	1
2005		15	0	0	0			0			0.16	2	0	2	0	0
2006		10	1	0	1	7.0		10	0	100	0.24	0	1	2	0	1
Mean	9	10	2	1	3	3.1	29	36	20	13	0.29	1	0	4	1	1

\*Permits include all limited entry, conservation and convention permits.

\*\*Harvest quota in limited entry units during the harvest quota season are the total number of limited entry permits minus the number of cougars harvested during the limited entry season

Other mortality includes DWR control, roadkill, poaching, found dead, etc.

Total cougar mortality for unit 13b – La Sal, Dolores Triangle, Utah 1994–2006.

Year	Limited entry permits*	Harvest objective quota**	Sport male harvest	Sport female harvest	Total sport harvest	Mean age	% permits filled	% quota filled	% females	% ≥ 6 yrs old	Cougar treed / day	Wildlife services harvest	Other mortality	Total harvest + mortality	Non-hunt males	Non-hunt females
1994	5		1	0	1		20		0			0	0	1		
1995	5		0	0	0		0					0	0	0		
1996	5		2	0	2	4.0	40		0			0	0	2		
1997		5	0	0	0			0				0	0	0		
1998		5	0	0	0			0			0.34	0	0	0		
1999	5		0	0	0		0				0.23	0	0	0		
2000		5	0	0	0			0			0.36	0	0	0		
2001		5	0	0	0			0				0	0	0	0	0
2002		5	0	0	0			0				0	0	0	0	0
2003		5	0	0	0			0			0.12	0	0	0	0	0
2004		10	0	0	0			0			0.00	1	0	1	0	1
2005		10	1	0	1			10	0		1.15	0	0	1	0	0
2006		5	0	0	0			0				0	1	1	1	0
Mean	5	6	0	0	0	4.0	15	1	0		0.37	0	0	0	0	0

\*Permits include all limited entry, conservation and convention permits.

\*\*Harvest quota in limited entry units during the harvest quota season are the total number of limited entry permits minus the number of cougars harvested during the limited entry season  
Other mortality includes DWR control, roadkill, poaching, found dead, etc.

Total cougar mortality for unit 13 – La Sal, La Sal Mountains, Utah 2007–2010.

Year	Limited entry permits*	Harvest objective quota**	Sport male harvest	Sport female harvest	Total sport harvest	Mean age	% permits filled	% quota filled	% females	% ≥ 6 yrs old	Cougar treed / day	Wildlife services harvest	Other mortality	Total harvest + mortality	Non-hunt males	Non-hunt females
2007		10	4	2	6	2.7		60	33	0	0.28	0	1	7	0	1
2008		10	0	1	1	1.0		10	100	0	0.31	0	1	2	0	1
2009		7	2	2	4	5.0		57	50	33	0.42	0	1	5	0	1
2010		7	5	1	6	3.0		86	17	0	0.14	0	0	6	0	0
Mean		9	3	2	4	2.9		53	50	8	0.29	0	1	5	0	1

\*Permits include all limited entry, conservation and convention permits.

\*\*Harvest quota in limited entry units during the harvest quota season are the total number of limited entry permits minus the number of cougars harvested during the limited entry season

Other mortality includes DWR control, roadkill, poaching, found dead, etc.

All subunits were recombined in 2007.

Total cougar mortality for unit 14 – San Juan, Utah 1990–2001, 2006–2009.

Year	Limited entry permits*	Harvest objective quota**	Sport male harvest	Sport female harvest	Total sport harvest	Mean age	% permits filled	% quota filled	% females	% ≥ 6 yrs old	Cougar treed / day	Wildlife services harvest	Other mortality	Total harvest + mortality	Non-hunt males	Non-hunt females
1990	13		2	0	2		15		0			0	0	2		
1991	13		3	2	5		38		40			0	0	5		
1992	13		7	4	11		85		36			0	0	11		
1993	13		2	2	4		31		50			0	1	5		
1994	15		3	3	6		40		50			0	0	6		
1995	24		7	2	9		38		22			0	0	9		
1996	24		5	5	10	3.8	42		50	20		0	0	10		
1997		20	13	8	21	5.1		105	38	33		0	1	22		
1998		20	12	9	21	2.8		105	43	0	0.85	0	0	21		
1999		20	6	4	10	3.1		50	40	0	0.37	0	0	10		
2000		20	12	8	20	3.0		100	40	6	1.19	0	1	21		
2001		25	9	8	17	3.7		68	47	20	0.48	0	0	17		
2006		30	9	8	17	2.9		57	47	0	0.23	0	0	17	0	0
2007		25	10	5	16	2.5		64	33	8	0.13	0	0	16	0	0
2008		25	10	9	19	2.4		76	47	0	0.35	0	0	19	0	0
2009		20	8	8	16	3.1		80	50	7	0.47	0	1	17	1	0
Mean	16	23	7	5	13	3.2	41	78	40	9	0.51	0	0	13	0	0

\*Permits include all limited entry, conservation and convention permits.

\*\*Harvest quota in limited entry units during the harvest quota season are the total number of limited entry permits minus the number of cougars harvested during the limited entry season. Other mortality includes DWR control, roadkill, poaching, found dead, etc.

Unit 14 was broken into subunits 14a and 14b from 2002 to 2005.

Total cougar mortality for unit 14a – San Juan, Abajo Mountains, Utah 2002–2005, 2010.

Year	Limited entry permits*	Harvest objective quota**	Sport male harvest	Sport female harvest	Total sport harvest	Mean age	% permits filled	% quota filled	% females	% ≥ 6 yrs old	Cougar treed / day	Wildlife services harvest	Other mortality	Total harvest + mortality	Non-hunt males	Non-hunt females
2002		15	1	3	4	1.0		27	75	0		0	0	4	0	0
2003		15	9	7	16	3.9		107	44	25	0.56	0	1	17	0	1
2004		25	8	11	19	4.3		76	58	27	0.12	0	0	19	0	0
2005		25	4	1	5	1.0		20	20	0	0.31	0	0	5	0	0
2010	10		7	2	9	3.1	90		22	0	0.20	0	1	10	0	1
Mean	10	20	6	5	11	2.7	90	57	44	10	0.30	0	0	11	0	0

\*Permits include all limited entry, conservation and convention permits.

\*\*Harvest quota in limited entry units during the harvest quota season are the total number of limited entry permits minus the number of cougars harvested during the limited entry season  
Other mortality includes DWR control, roadkill, poaching, found dead, etc.

Total cougar mortality for unit 14b – San Juan, Elk Ridge, Utah 2002–2005, 2010.

Year	Limited entry permits*	Harvest objective quota**	Sport male harvest	Sport female harvest	Total sport harvest	Mean age	% permits filled	% quota filled	% females	% ≥ 6 yrs old	Cougar treed / day	Wildlife services harvest	Other mortality	Total harvest + mortality	Non-hunt males	Non-hunt females
2002		10	1	1	2	3.0		20	50	0		0	0	2	0	0
2003		10	5	3	8	3.8		80	38	17	0.27	0	0	8	0	0
2004		15	3	3	6	1.0		40	50	0		0	0	6	0	0
2005		15	1	1	2	10.0		13	50	100	0.11	0	0	2	0	0
2010		10	4	0	4	2.0		40	0	0	0.35	0	0	4	0	0
Mean		12	3	2	4	4.0		39	38	23	0.24	0	0	4	0	0

\*Permits include all limited entry, conservation and convention permits.

\*\*Harvest quota in limited entry units during the harvest quota season are the total number of limited entry permits minus the number of cougars harvested during the limited entry season  
Other mortality includes DWR control, roadkill, poaching, found dead, etc.

Total cougar mortality for unit 15 – Henry Mountains, Utah 1990–2010.

Year	Limited entry permits*	Harvest objective quota**	Sport male harvest	Sport female harvest	Total sport harvest	Mean age	% permits filled	% quota filled	% females	% ≥ 6 yrs old	Cougar treed / day	Wildlife services harvest	Other mortality	Total harvest + mortality	Non-hunt males	Non-hunt females
1990	4		0	0	0		0					0	1	1		
1991	4		1	1	2		50		50			0	0	2		
1992	4		1	0	1		25		0			0	0	1		
1993	4		1	1	2		50		50			0	0	2		
1994	4		0	0	0		0					0	0	0		
1995	4		1	1	2		50		50			0	0	2		
1996	4		2	1	3	4.0	75		33	0		0	0	3		
1997		5	1	5	6	4.4		120	83	20		0	0	6		
1998		5	1	2	3	3.0		60	67	0	0.40	0	0	3		
1999		5	3	0	3	1.3		60	0	0	0.38	0	0	3		
2000		5	3	2	5	3.5		100	40	20	0.73	0	0	5		
2001		8	3	3	6	2.8		75	50	0	0.55	0	0	6		
2002		8	6	1	7	2.3		88	14	0	0.12	0	0	7	0	0
2003		8	3	4	7	4.0		88	57	20	0.35	0	0	7	0	0
2004		8	2	3	5	3.6		63	60	20		0	0	5	0	0
2005		8	1	0	1			13	0		0.28	0	0	1	0	0
2006		8	2	1	3	3.0		38	33	0	0.21	0	0	3	0	0
2007		6	0	0	0			0			0.38	0	0	0	0	0
2008		4	1	1	2	2.0		50	50	0	0.00	0	0	2	0	0
2009		4	1	1	2	4.0		50	50	0		0	0	2	0	0
2010		4	0	0	0			0				0	0	0	0	0
Mean	4	6	2	1	3	3.2	36	57	40	7	0.34	0	0	3	0	0

\*Permits include all limited entry, conservation and convention permits.

\*\*Harvest quota in limited entry units during the harvest quota season are the total number of limited entry permits minus the number of cougars harvested during the limited entry season  
Other mortality includes DWR control, roadkill, poaching, found dead, etc.

Total cougar mortality for unit 16a – Central Mountains, Nebo, Utah 1990–2010.

Year	Limited entry permits*	Harvest objective quota**	Sport male harvest	Sport female harvest	Total sport harvest	Mean age	% permits filled	% quota filled	% females	% ≥ 6 yrs old	Cougar treed / day	Wildlife services harvest	Other mortality	Total harvest + mortality	Non-hunt males	Non-hunt females
1990	26		13	3	16		62		19			16	0	32		
1991	26		12	10	22		85		45			13	0	35		
1992	26		10	5	15		58		33			8	0	23		
1993	34		21	6	27		79		22			7	1	35		
1994	34		12	7	19		56		37			11	0	30		
1995	52		14	17	31		60		55			2	4	37		
1996	43		5	11	16	2.9	37		69	7		2	0	18		
1997	43		16	13	29	2.9	67		45	8		5	1	35		
1998	34		9	10	19	4.8	56		53	17	0.40	1	0	20		
1999	24		12	5	17	3.2	71		29	11	0.34	0	0	17		
2000	24		11	3	14	2.7	58		21	3	0.37	0	0	14		
2001	24		11	4	15	3.3	63		27	7	0.21	10	1	26		
2002	24		10	9	19	3.5	79		47	18	0.26	2	0	21	0	2
2003	18		7	8	15	4.5	83		53	25	0.49	5	0	20	4	1
2004	18		9	7	16	3.1	89		44	7	0.44	2	3	21	2	2
2005	18		6	3	9	2.6	50		33	0	0.35	2	0	11	2	1
2006	12		4	3	7	3.3	58		43	0	0.21	4	0	11	2	2
2007	11		4	1	5	3.6	45		20	20	0.10	1	3	9	0	3
2008	9		3	1	4	3.8	44		25	25	0.53	4	0	8	2	2
2009	9		6	1	7	2.7	78		14	0	0.21	6	1	14	3	2
2010	9		4	2	6	2.8	67		33	0	0.38	2	2	10	2	2
Mean	25		9	6	16	3.3	64		37	10	0.33	5	1	21	2	2

\*Permits include all limited entry, conservation and convention permits.

\*\*Harvest quota in limited entry units during the harvest quota season are the total number of limited entry permits minus the number of cougars harvested during the limited entry season

Other mortality includes DWR control, roadkill, poaching, found dead, etc.

Before 2003, sub-unit was named "Manti, Nebo".

Total cougar mortality for unit 16a1 – Central Mountains, Nebo-West Face, Utah 2003–2010.

Year	Limited entry permits*	Harvest objective quota**	Sport male harvest	Sport female harvest	Total sport harvest	Mean age	% permits filled	% quota filled	% females	% ≥ 6 yrs old	Cougar treed / day	Wildlife services harvest	Other mortality	Total harvest + mortality	Non-hunt males	Non-hunt females
2003		20	10	10	20	2.9		100	50	5	0.46	0	0	20	0	0
2004		20	3	12	15	2.7		75	80	8	0.27	0	1	16	1	0
2005		20	6	5	11	1.9		55	45	0	0.10	0	0	11	0	0
2006		20	5	9	14	2.4		70	64	0	0.11	0	0	14	0	0
2007	20		8	3	11	1.9	55		27	0	0.39	0	0	11	0	0
2008	20		4	3	7	2.3	35		43	0	0.14	0	0	7	0	0
2009	20		12	3	15	3.7	75		20	20	0.19	0	0	15	0	0
2010	21		3	1	5	2.2	24		20	0	0.09	0	0	5	0	0
Mean	20	20	6	6	12	2.5	47	75	44	4	0.22	0	0	12	0	0

\*Permits include all limited entry, conservation and convention permits.

\*\*Harvest quota in limited entry units during the harvest quota season are the total number of limited entry permits minus the number of cougars harvested during the limited entry season  
Other mortality includes DWR control, roadkill, poaching, found dead, etc.



Total cougar mortality for unit 16b – Central Mountains, North Manti, Utah 1990–2003.

Year	Limited entry permits*	Harvest objective quota**	Sport male harvest	Sport female harvest	Total sport harvest	Mean age	% permits filled	% quota filled	% females	% ≥ 6 yrs old	Cougar treed / day	Wildlife services harvest	Other mortality	Total harvest + mortality	Non-hunt males	Non-hunt females
1990	20		6	6	12		60		50			3	1	16		
1991	20		9	2	11		55		18			2	1	14		
1992	20		10	1	11		55		9			4	5	20		
1993	35		15	8	23		66		35			3	5	31		
1994	42		17	8	25		60		32			1	0	26		
1995	52		20	10	30		58		33			2	3	35		
1996	49		14	14	28	2.3	57		50	7		0	0	28		
1997	48		13	10	23	3.2	48		43	8		1	0	24		
1998	45		7	10	17	3.7	38		59	17	0.40	0	2	19		
1999	40		11	13	24	3.2	60		54	11	0.34	4	0	28		
2000	28		11	7	18	2.7	64		39	3	0.37	5	0	23		
2001	28		11	7	18	2.8	64		39	6	0.18	0	2	20		
2002	27		11	6	17	3.5	63		35	18	0.22	5	2	24	5	2
2003	28		9	6	15	2.7	54		40	0	0.24	3	7	25	4	6
Mean	34		12	8	19	3.0	57		38	9	0.29	2	2	24	5	4

\*Permits include all limited entry, conservation and convention permits.

\*\*Harvest quota in limited entry units during the harvest quota season are the total number of limited entry permits minus the number of cougars harvested during the limited entry season

Other mortality includes DWR control, roadkill, poaching, found dead, etc.

Before 2003, sub-unit was named "Manti, North Manti".

Total cougar mortality for unit 16b1 – Central Mountains, Northwest Manti, Utah 2004–2010.

Year	Limited entry permits*	Harvest objective quota**	Sport male harvest	Sport female harvest	Total sport harvest	Mean age	% permits filled	% quota filled	% females	% ≥ 6 yrs old	Cougar treed / day	Wildlife services harvest	Other mortality	Total harvest + mortality	Non-hunt males	Non-hunt females
2004	16		6	2	8	2.7	50		25	0		0	1	9	0	1
2005	17		8	2	10	1.6	59		20	0	0.18	1	1	12	0	1
2006	16		4	2	6	3.2	38		33	0	0.35	0	0	6	0	0
2007	12		1	4	5	4.0	42		80	20	0.50	0	0	5	1	0
2008	10		4	0	4	2.5	40		0	0	0.43	0	0	4	0	0
2009	10		6	0	6	3.5	60		0	17	0.21	0	1	7	1	0
2010	10		8	1	9	2.9	90		11	0	0.10	0	0	9	0	0
Mean	13		5	2	7	2.9	54		24	5	0.30	0	0	7	0	0

\*Permits include all limited entry, conservation and convention permits.

\*\*Harvest quota in limited entry units during the harvest quota season are the total number of limited entry permits minus the number of cougars harvested during the limited entry season

Other mortality includes DWR control, roadkill, poaching, found dead, etc.

Total cougar mortality for Unit 16b2 – Central Mountains, Northeast Manti, Utah 2004–2010.

Year	Limited entry permits*	Harvest objective quota**	Sport male harvest	Sport female harvest	Total sport harvest	Mean age	% permits filled	% quota filled	% females	% ≥ 6 yrs old	Cougar treed / day	Wildlife services harvest	Other mortality	Total harvest + mortality	Non-hunt males	Non-hunt females
2004		20	9	11	20	4.7		100	55	33		0	0	20	0	0
2005	20	10	3	5	8	3.7	20	40	63	29	0.10	1	0	9	1	0
2006	18		5	1	6	2.4	33		17	0	0.27	1	0	7	0	1
2007	17		3	2	5	2.3	29		40	0	0.14	0	0	5	0	0
2008	13		4	1	5	4.6	31		20	20	0.33	1	0	6	1	0
2009	13		5	2	7	3.3	54		29	17	0.10	0	0	7	0	0
2010	13		3	8	11	2.7	85		73	0	0.13	1	0	12	1	0
Mean	16	15	5	4	9	3.4	42	70	42	14	0.18	1	0	9	0	0

\*Permits include all limited entry, conservation and convention permits.

\*\*Harvest quota in limited entry units during the harvest quota season are the total number of limited entry permits minus the number of cougars harvested during the limited entry season

Other mortality includes DWR control, roadkill, poaching, found dead, etc.

Total cougar mortality for unit 16c – Central Mountains, South Manti, Utah 1990–2003.

Year	Limited entry permits*	Harvest objective quota**	Sport male harvest	Sport female harvest	Total sport harvest	Mean age	% permits filled	% quota filled	% females	% ≥ 6 yrs old	Cougar treed / day	Wildlife services harvest	Other mortality	Total harvest + mortality	Non-hunt males	Non-hunt females
1990	29		12	3	15		52		20			2	1	18		
1991	29		12	5	17		59		29			6	0	23		
1992	29		14	3	17		59		18			5	1	23		
1993	33		25	6	31		94		19			5	2	38		
1994	37		20	9	29		78		31			4	0	33		
1995	56		17	18	35		63		51			5	9	49		
1996	44		13	14	27	3.4	61		52	7		3	1	31		
1997	36		19	6	25	2.8	69		24	8		3	0	28		
1998	40		15	9	24	2.4	60		38	17	0.40	3	2	29		
1999	25		10	6	16	3.2	64		38	11	0.34	1	0	17		
2000	20		10	5	15	2.7	75		33	3	0.37	0	0	15		
2001	20		8	7	15	3.7	75		47	21	0.34	3	1	19		
2002	21		13	4	17	3.7	81		24	13	0.31	1	1	19	2	0
2003	20		14	4	18	3.6	90		22	14	0.28	11	1	30	2	10
Mean	31		14	7	22	3.2	70		32	12	0.34	4	1	27	2	5

\*Permits include all limited entry, conservation and convention permits.

\*\*Harvest quota in limited entry units during the harvest quota season are the total number of limited entry permits minus the number of cougars harvested during the limited entry season

Other mortality includes DWR control, roadkill, poaching, found dead, etc.

Before 2003, sub-unit was named "Manti, South Manti".

Total cougar mortality for unit 16c1 – Central Mountains, Southwest Manti, Utah 2004–2010.

Year	Limited entry permits*	Harvest objective quota**	Sport male harvest	Sport female harvest	Total sport harvest	Mean age	% permits filled	% quota filled	% females	% ≥ 6 yrs old	Cougar treed / day	Wildlife services harvest	Other mortality	Total harvest + mortality	Non-hunt males	Non-hunt females
2004	16		10	3	13	2.8	81		23	0		11	5	29	6	10
2005	16		8	2	10	2.0	63		20	0	0.32	1	0	11	1	0
2006	11		7	4	11	2.9	100		36	0	0.32	3	0	14	3	0
2007	8		3	3	6	3.6	75		50	20	0.30	0	0	6	0	0
2008	5		4	1	5	3.4	80		20	0	0.38	0	0	5	0	0
2009	5		6	0	6	2.8	60		0	0	0.43	0	2	8	1	1
2010	5		8	3	11	3.1	200		27	0	0.95	1	0	12	1	0
Mean	9		7	2	9	2.9	94		25	3	0.45	2	1	12	2	2

\*Permits include all limited entry, conservation and convention permits.

\*\*Harvest quota in limited entry units during the harvest quota season are the total number of limited entry permits minus the number of cougars harvested during the limited entry season

Other mortality includes DWR control, roadkill, poaching, found dead, etc.

Total cougar mortality for Unit 16c2 – Central Mountains, Southeast Manti, Utah 2004–2010.

Year	Limited entry permits*	Harvest objective quota**	Sport male harvest	Sport female harvest	Total sport harvest	Mean age	% permits filled	% quota filled	% females	% ≥ 6 yrs old	Cougar treed / day	Wildlife services harvest	Other mortality	Total harvest + mortality	Non-hunt males	Non-hunt females
2004		20	9	11	20	3.8		100	55	17		4	1	25	2	3
2005	19	10	7	10	17	3.6	37	100	59	21	0.13	1	1	19	1	0
2006	18		3	1	4	3.0	22		25	0	0.14	2	0	6	0	2
2007	18		6	1	7	3.0	39		14	17	0.16	0	0	7	0	0
2008	12		3	2	5	1.3	33		40	0	0.48	0	1	6	0	1
2009	12		7	1	8	3.9	58		13	0	0.60	0	0	8	0	0
2010	11		5	6	11	6.4	100		55	40	0.32	0	0	11	0	0
Mean	15	15	6	5	10	3.6	48	100	37	14	0.31	1	0	12	0	1

\*Permits include all limited entry, conservation and convention permits.

\*\*Harvest quota in limited entry units during the harvest quota season are the total number of limited entry permits minus the number of cougars harvested during the limited entry season

Other mortality includes DWR control, roadkill, poaching, found dead, etc.

Total cougar mortality for unit 17 – Wasatch Mountains, Utah 1990–2001.

Year	Limited entry permits*	Harvest objective quota**	Sport male harvest	Sport female harvest	Total sport harvest	Mean age	% permits filled	% quota filled	% females	% ≥ 6 yrs old	Cougar treed / day	Wildlife services harvest	Other mortality	Total harvest + mortality	Non-hunt males	Non-hunt females
1990	10		2	2	4		40		50			0	0	4		
1991	10		2	1	3		30		33			0	0	3		
1992	10		4	0	4		40		0			0	1	5		
1993	28		11	4	15		54		27			6	7	28		
1994	30		9	8	17		57		47			1	4	22		
1995	43		15	10	25		58		40			4	8	37		
1996	43		20	11	31	3.2	72		35	17		1	1	33		
1997	42		18	11	29	3.4	69		38	19		2	11	42		
1998	60		21	15	36	4.6	60		42	12	0.39	2	0	38		
1999	55		15	13	28	2.6	51		46	11	0.23	1	0	29		
2000	40	12	27	20	47	3.0	82	100	43	15	0.32	4	0	51		
2001	40	24	21	26	47	2.8	68	83	55	7	0.26	5	5	57		
Mean	34	18	14	10	24	3.3	57	92	38	14	0.30	2	3	29		

\*Permits include all limited entry, conservation and convention permits.

\*\*Harvest quota in limited entry units during the harvest quota season are the total number of limited entry permits minus the number of cougars harvested during the limited entry season  
Other mortality includes DWR control, roadkill, poaching, found dead, etc.

Total cougar mortality for unit 17a1 – Wasatch Mountains, Timpanogos, Utah 2002–2010.

Year	Limited entry permits*	Harvest objective quota**	Sport male harvest	Sport female harvest	Total sport harvest	Mean age	% permits filled	% quota filled	% females	% ≥ 6 yrs old	Cougar treed / day	Wildlife services harvest	Other mortality	Total harvest + mortality	Non-hunt males	Non-hunt females
2002		12	5	5	10	2.8		83	50	0		0	0	10	0	0
2003		15	5	1	6	4.0		40	17	0	0.38	0	1	7	1	0
2004		15	4	0	4	2.5		27	0	0	0.47	0	0	4	0	0
2005		12	0	4	4	1.3		33	100	0	0.21	0	0	4	0	0
2006		12	3	3	6	3.8		50	50	17	0.12	0	0	6	0	0
2007		12	2	1	3	3.0		25	33	33	0.04	0	0	3	0	0
2008		9	2	7	9	3.0		100	78	17	0.27	0	1	10	0	1
2009		12	2	4	6	1.5		50	67	0	0.08	1	0	7	1	0
2010		12	3	1	4	3.3		33	25	0	0.11	0	4	8	2	1
Mean		12	3	3	6	2.8		49	47	7	0.21	0	1	7	0	0

\*Permits include all limited entry, conservation and convention permits.

\*\*Harvest quota in limited entry units during the harvest quota season are the total number of limited entry permits minus the number of cougars harvested during the limited entry season  
Other mortality includes DWR control, roadkill, poaching, found dead, etc.

Total cougar mortality for unit 17a2 – Wasatch Mountains, Cascade, Utah 2002–2010.

Year	Limited entry permits*	Harvest objective quota**	Sport male harvest	Sport female harvest	Total sport harvest	Mean age	% permits filled	% quota filled	% females	% ≥ 6 yrs old	Cougar treed / day	Wildlife services harvest	Other mortality	Total harvest + mortality	Non-hunt males	Non-hunt females
2002		12	7	6	13	2.6		108	46	17		0	1	14	0	1
2003		15	6	4	10	3.1		67	40	0	0.25	0	0	10	0	0
2004		15	4	4	8	3.8		53	50	33	0.50	0	0	8	0	0
2005		12	1	2	3	1.3		25	67	0	0.18	0	0	3	0	0
2006		12	5	3	8	4.0		67	38	14	0.18	0	0	8	0	0
2007		12	3	0	3	3.5		25	0	0	0.08	0	0	3	0	0
2008		9	3	6	9	3.7		100	67	22	0.49	0	0	9	0	0
2009		9	2	2	4	2.3		44	50	0		0	0	4	0	0
2010		9	4	4	8	2.3		89	50	0	0.37	0	0	8	0	0
Mean		12	4	3	7	3.0		64	45	10	0.29	0	0	7	0	0

\*Permits include all limited entry, conservation and convention permits.

\*\*Harvest quota in limited entry units during the harvest quota season are the total number of limited entry permits minus the number of cougars harvested during the limited entry season  
Other mortality includes DWR control, roadkill, poaching, found dead, etc.

Total cougar mortality for unit 17a3 – Wasatch Mountains, West, Utah 2002–2010.

Year	Limited entry permits*	Harvest objective quota**	Sport male harvest	Sport female harvest	Total sport harvest	Mean age	% permits filled	% quota filled	% females	% ≥ 6 yrs old	Cougar treed / day	Wildlife services harvest	Other mortality	Total harvest + mortality	Non-hunt males	Non-hunt females
2002	13		5	5	10	3.3	77		50	22	0.46	1	0	11	0	1
2003	12		4	3	7	6.3	58		43	33	0.32	0	2	9	2	0
2004	11		5	3	8	3.5	73		38	25	0.38	1	1	10	0	2
2005	11		6	2	8	2.3	73		25	0	0.00	1	1	10	0	0
2006	13		7	4	11	3.4	85		36	0	0.49	1	1	13	1	1
2007	10		4	2	6	3.2	60		33	0	0.37	0	0	6	0	0
2008	10		7	3	10	2.3	90		30	0	0.38	1	3	14	2	2
2009	11		6	5	11	3.7	73		45	22	0.38	1	2	14	1	2
2010	11		6	1	7	2.2	55		14	0	0.27	0	6	13	0	5
Mean	11		6	3	9	3.4	71		35	11	0.34	1	2	11	1	1

\*Permits include all limited entry, conservation and convention permits.

\*\*Harvest quota in limited entry units during the harvest quota season are the total number of limited entry permits minus the number of cougars harvested during the limited entry season  
Other mortality includes DWR control, roadkill, poaching, found dead, etc.  
2002, 2003, and 2004 unit was called 17a Wasatch Mountains, West.

Total cougar mortality for Unit 17bc – Wasatch Mountains, Carrant Creek / Avintaquin, Utah 2002–2003.

Year	Limited entry permits*	Harvest objective quota**	Sport male harvest	Sport female harvest	Total sport harvest	Mean age	% permits filled	% quota filled	% females	% ≥ 6 yrs old	Cougar treed / day	Wildlife services harvest	Other mortality	Total harvest + mortality	Non-hunt males	Non-hunt females
2002	26		8	6	14	3.6	54		43	21	0.13	3	0	17	1	1
2003	25		9	6	15	3.9	60		40	20	0.21	1	1	17	0	2
Mean	26		9	6	15	3.8	57		41	21	0.17	2	1	17	1	2

\*Permits include all limited entry, conservation and convention permits.

\*\*Harvest quota in limited entry units during the harvest quota season are the total number of limited entry permits minus the number of cougars harvested during the limited entry season  
Other mortality includes DWR control, roadkill, poaching, found dead, etc.



Total cougar mortality for unit 17b – Wasatch Mountains, Currant Creek, Utah 2004–2010.

Year	Limited entry permits*	Harvest objective quota**	Sport male harvest	Sport female harvest	Total sport harvest	Mean age	% permits filled	% quota filled	% females	% ≥ 6 yrs old	Cougar treed / day	Wildlife services harvest	Other mortality	Total harvest + mortality	Non-hunt males	Non-hunt females
2004	15		2	1	3	2.7	20		33	0		2	0	5	0	1
2005	14		3	2	5	4.5	36		40	25	0.14	0	0	5	0	0
2006	14		4	0	4	3.5	29		0	25	0.13	0	0	4	0	0
2007	14		1	2	3	1.5	21		67	0	0.25	0	0	3	0	0
2008	8		1	1	2	3.0	25		50	0	0.00	0	1	3	1	0
2009	7		4	1	5	4.0	71		20	0	0.15	2	0	7	0	2
2010	7		2	0	2	2.5	29		0	0	0.05	0	3	5	1	2
Mean	11		2	1	3	3.1	33		30	7	0.12	1	1	5	0	1

\*Permits include all limited entry, conservation and convention permits.

\*\*Harvest quota in limited entry units during the harvest quota season are the total number of limited entry permits minus the number of cougars harvested during the limited entry season

Other mortality includes DWR control, roadkill, poaching, found dead, etc.

Total cougar mortality for unit 17c – Wasatch Mountains, Avintaquin, Utah 2004–2010.

Year	Limited entry permits*	Harvest objective quota**	Sport male harvest	Sport female harvest	Total sport harvest	Mean age	% permits filled	% quota filled	% females	% ≥ 6 yrs old	Cougar treed / day	Wildlife services harvest	Other mortality	Total harvest + mortality	Non-hunt males	Non-hunt females
2004		15	1	9	10	2.6		67	90	0		0	0	10	0	0
2005		15	4	4	8	2.5		53	50	0	0.35	1	0	9	0	0
2006		15	2	2	4	1.7		27	50	0	0.16	0	0	4	0	0
2007		10	2	4	6	4.2		60	67	20	0.26	0	0	6	0	0
2008		10	6	1	7	3.3		70	14	14	0.11	0	0	7	0	0
2009		10	3	4	7	5.0		70	57	25	0.08	0	1	8	1	0
2010		10	5	4	9	3.5		90	44	0	0.30	1	1	11	0	2
Mean		12	3	4	7	3.3		62	53	8	0.21	0	0	8	0	0

\*Permits include all limited entry, conservation and convention permits.

\*\*Harvest quota in limited entry units during the harvest quota season are the total number of limited entry permits minus the number of cougars harvested during the limited entry season

Other mortality includes DWR control, roadkill, poaching, found dead, etc.

Total cougar mortality for unit 18 – Oquirrh-Stansbury, Utah 1990–2010.

Year	Limited entry permits*	Harvest objective quota**	Sport male harvest	Sport female harvest	Total sport harvest	Mean age	% permits filled	% quota filled	% females	% ≥ 6 yrs old	Cougar treed / day	Wildlife services harvest	Other mortality	Total harvest + mortality	Non-hunt males	Non-hunt females
1990	11		2	2	4		36		50			2	0	6		
1991	11		7	2	9		82		22			1	0	10		
1992	11		3	1	4		36		25			1	1	6		
1993	15		6	2	8		53		25			0	1	9		
1994	17		5	5	10		59		50			3	0	13		
1995	26		6	9	15		58		60			0	0	15		
1996	26		9	9	18	3.9	69		50	27		2	2	22		
1997	20		6	5	11	4.9	55		45	27		2	2	15		
1998	20		9	8	17	2.8	85		47	13	0.30	0	1	18		
1999	13		7	3	10	4.0	77		30	11	0.20	0	0	10		
2000	13		4	4	8	3.0	62		50	17	0.26	0	0	8		
2001	13		6	3	9	4.6	69		33	25	0.17	0	0	9		
2002	16		6	5	11	3.3	69		45	0	0.16	0	1	12	1	0
2003	12		6	2	8	4.0	67		25	0	0.45	0	3	11	2	1
2004	11		1	3	4	2.5	36		75	0	0.32	0	0	4	0	0
2005	7		1	4	5	4.4	71		80	40	0.18	1	3	9	2	3
2006	7		4	2	6	3.4	86		33	20	0.31	1	0	7	0	0
2007	6		2	0	2	3.0	33		0	0	0.28	0	0	2	0	0
2008	6		3	1	4	2.8	67		25	0	0.30	1	0	5	1	0
2009	6		1	1	2	3.5	33		50	0	0.18	1	0	3	1	0
2010	3		1	1	2	5.0	33		50	50	0.18	0	0	2	0	0
Mean	13		5	3	8	3.7	59		42	15	0.25	1	1	9	1	0

\*Permits include all limited entry, conservation and convention permits.

\*\*Harvest quota in limited entry units during the harvest quota season are the total number of limited entry permits minus the number of cougars harvested during the limited entry season  
Other mortality includes DWR control, roadkill, poaching, found dead, etc.

Total cougar mortality for unit 19a – West Desert, Mountain Ranges, Utah 1990–2010.

Year	Limited entry permits*	Harvest objective quota**	Sport male harvest	Sport female harvest	Total sport harvest	Mean age	% permits filled	% quota filled	% females	% ≥ 6 yrs old	Cougar treed / day	Wildlife services harvest	Other mortality	Total harvest + mortality	Non-hunt males	Non-hunt females
1990	17		2	0	2		12		0			0	0	2		
1991	17		0	1	1		6		100			3	1	5		
1992	17		0	1	1		6		100			0	1	2		
1993	20		3	1	4		20		25			2	1	7		
1994	20		2	3	5		25		60			3	0	8		
1995	20		4	4	8		40		50			3	6	17		
1996	20		4	2	6	4.7	30		33	25		0	1	7		
1997		10	4	6	10	4.8		100	60	31		0	0	10		
1998		10	1	3	4	4.1		40	75	40	0.29	2	1	7		
1999		10	1	2	3	3.2		30	67	17	0.20	0	0	3		
2000		10	2	1	3	2.9		30	33	13	0.17	0	0	3		
2001		8	3	0	3	3.0		38	0	0	0.29	0	0	3		
2002		8	1	3	4	4.3		50	75	25	0.02	0	0	4	0	0
2003		8	2	0	2	4.0		25	0	0	0.00	0	0	2	0	0
2004		8	0	1	1	12.0		13	100	100	0.00	0	0	1	0	0
2005		8	1	1	2	2.0		25	50	0	0.14	0	0	2	0	0
2006	8		2	2	4	5.5	50		50	50	0.47	0	0	4	0	0
2007	8		0	1	1	5.0	13		100	0	0.00	0	0	1	0	0
2008	6		0	0	0		0				0.00	0	1	1	1	0
2009	6		0	3	3	7.0	50		100	67	0.29	0	1	4	0	1
2010	3		1	0	1	4.0	33		0	0	0.11	0	0	1	0	0
Mean	14	9	2	2	3	4.7	24	39	54	26	0.15	1	1	4	0	0

\*Permits include all limited entry, conservation and convention permits.

\*\*Harvest quota in limited entry units during the harvest quota season are the total number of limited entry permits minus the number of cougars harvested during the limited entry season  
Other mortality includes DWR control, roadkill, poaching, found dead, etc.

Total cougar mortality for unit 19b – West Desert, Tintic-Vernon, Utah 1990–2010.

Year	Limited entry permits*	Harvest objective quota**	Sport male harvest	Sport female harvest	Total sport harvest	Mean age	% permits filled	% quota filled	% females	% ≥ 6 yrs old	Cougar treed / day	Wildlife services harvest	Other mortality	Total harvest + mortality	Non-hunt males	Non-hunt females
1990	11		3	2	5		45		40			3	0	8		
1991	11		5	0	5		45		0			1	2	8		
1992	11		3	1	4		36		25			4	0	8		
1993	10		2	2	4		40		50			3	0	7		
1994	10		2	2	4		40		50			8	1	13		
1995	15		3	5	8		53		63			0	0	8		
1996	15		4	7	11	4.7	73		64	25		1	3	15		
1997		5	1	7	8	4.8		160	88	31		1	1	10		
1998		5	3	5	8	4.1		160	63	40	0.29	0	0	8		
1999	8		3	0	3		38		0	17	0.20	0	0	3		
2000	8		2	3	5		63		60	13	0.17	0	0	5		
2001		7	4	3	7	4.1		100	43	29	0.38	0	0	7		
2002	15		1	3	4	2.0	27		75	0	0.25	1	0	5	0	0
2003	15		6	0	6	2.4	40		0	0	0.14	0	0	6	0	0
2004	15		1	2	3	3.0	20		67	0	0.48	1	0	4	0	0
2005	15		4	1	5	2.3	33		20	0	0.10	0	0	5	0	0
2006	9		3	3	6	3.3	67		50	33	0.28	0	0	6	0	0
2007	8		4	7	11	3.4	138		64	22	0.14	0	0	11	0	0
2008	6		2	1	3	2.3	50		33	0	0.19	0	0	3	0	0
2009	5		0	2	2	3.5	40		100	0	0.22	0	0	2	0	0
2010	3		1	0	1	5.0	33		0	0	0.14	0	0	1	0	0
Mean	11	6	3	3	5	3.4	49	140	45	14	0.23	1	0	7	0	0

\*Permits include all limited entry, conservation and convention permits.

\*\*Harvest quota in limited entry units during the harvest quota season are the total number of limited entry permits minus the number of cougars harvested during the limited entry season  
Other mortality includes DWR control, roadkill, poaching, found dead, etc.

Total cougar mortality for unit 19c – West Desert, Tintic, Utah 2002.

Year	Limited entry permits*	Harvest objective quota**	Sport male harvest	Sport female harvest	Total sport harvest	Mean age	% permits filled	% quota filled	% females	% ≥ 6 yrs old	Cougar treed / day	Wildlife services harvest	Other mortality	Total harvest + mortality	Non-hunt males	Non-hunt females
2002	10		3	3	6	3.2	60		50	0.0%		0	0	6	0	0
Mean	10		3	3	6		60		50			0	0	6	0	0

\*Permits include all limited entry, conservation and convention permits.

\*\*Harvest quota in limited entry units during the harvest quota season are the total number of limited entry permits minus the number of cougars harvested during the limited entry season  
Other mortality includes DWR control, roadkill, poaching, found dead, etc.

Total cougar mortality for unit 20 – Southwest Desert, Utah 1990–2010.

Year	Limited entry permits*	Harvest objective quota**	Sport male harvest	Sport female harvest	Total sport harvest	Mean age	% permits filled	% quota filled	% females	% ≥ 6 yrs old	Cougar treed / day	Wildlife services harvest	Other mortality	Total harvest + mortality	Non-hunt males	Non-hunt females
1990	8		5	3	8		100		38			1	2	11		
1991	8		3	1	4		50		25			0	1	5		
1992	8		0	2	2		25		100			0	1	3		
1993	8		3	3	6		75		50			0	1	7		
1994	11		3	4	7		64		57			0	0	7		
1995	12		2	3	5		42		60			0	0	5		
1996	12		4	0	4	2.8	33		0	25		0	1	5		
1997		12	5	4	9	4.4		75	44	22		0	2	11		
1998		12	6	0	6	2.8		50	0	12	0.26	0	0	6		
1999		12	2	2	4	3.0		33	50	0	0.29	0	0	4		
2000		12	4	2	6	2.0		50	33	0	0.09	0	0	6		
2001		12	8	1	9	3.5		75	11	25	0.36	0	0	9		
2002		12	5	6	11	3.7		92	55	10	0.09	0	0	11	0	0
2003		12	5	4	9	2.8		75	44	0	0.07	0	0	9	0	0
2004		12	3	3	6	4.0		50	50	33	0.13	0	0	6	0	0
2005		12	6	0	6	1.8		50	0	0	0.11	0	0	6	0	0
2006	12		3	1	4	4.5	33		25	25	0.10	0	0	4	0	0
2007	12		3	4	7	2.6	58		57	0	0.04	0	0	7	0	0
2008	11		2	0	2	1.5	18		0	0	0.06	0	0	2	0	0
2009	8		1	1	2	2.0	25		50	0	0.21	0	0	2	0	0
2010	6		2	0	2	3.0	33		0	0	0.14	0	0	2	0	0
Mean	10	12	4	2	6	3.0	46	61	36	10	0.15	0	0	6	0	0

\*Permits include all limited entry, conservation and convention permits.

\*\*Harvest quota in limited entry units during the harvest quota season are the total number of limited entry permits minus the number of cougars harvested during the limited entry season  
Other mortality includes DWR control, roadkill, poaching, found dead, etc.

Total cougar mortality for unit 21 – Fillmore, Utah 1990–2001.

Year	Limited entry permits*	Harvest objective quota**	Sport male harvest	Sport female harvest	Total sport harvest	Mean age	% permits filled	% quota filled	% females	% ≥ 6 yrs old	Cougar treed / day	Wildlife services harvest	Other mortality	Total harvest + mortality	Non-hunt males	Non-hunt females
1990	30		7	2	9		30		22			3	0	12		
1991	30		8	5	13		43		38			1	1	15		
1992	30		9	4	13		43		31			0	1	14		
1993	35		22	9	31		89		29			2	2	35		
1994	39		17	7	24		62		29			1	0	25		
1995	47		18	12	30		64		40			0	0	30		
1996	47		14	10	24	3.2	51		42	14		0	1	25		
1997		40	20	20	40	4.3		100	50	29		0	5	45		
1998		40	21	20	41	3.2		103	49	19	0.27	0	1	42		
1999		25	10	16	26	3.4		104	62	12	0.23	1	0	27		
2000		25	17	10	27	3.6		108	37	24	0.15	0	0	27		
2001		30	11	17	28	3.4		93	61	8	0.41	0	0	28		
Mean	37	32	15	11	26	3.5	55	102	41	18	0.27	1	1	27		

\*Permits include all limited entry, conservation and convention permits.

\*\*Harvest quota in limited entry units during the harvest quota season are the total number of limited entry permits minus the number of cougars harvested during the limited entry season  
Other mortality includes DWR control, roadkill, poaching, found dead, etc.

Total cougar mortality for unit 21a – Fillmore, Oak Creek, Utah 2002–2010.

Year	Limited entry permits*	Harvest objective quota**	Sport male harvest	Sport female harvest	Total sport harvest	Mean age	% permits filled	% quota filled	% females	% ≥ 6 yrs old	Cougar treed / day	Wildlife services harvest	Other mortality	Total harvest + mortality	Non-hunt males	Non-hunt females
2002		7	1	4	5	2.4		71	80	0	0.36	0	0	5	0	0
2003		7	3	4	7	3.3		100	57	0	0.17	0	0	7	0	0
2004		10	4	1	5	3.2		50	20	0	0.19	0	1	6	1	0
2005	1	15	2	3	5	2.4		33	60	0	0.10	0	0	5	0	0
2006	10		2	2	4	4.0	40		50	50	0.19	0	0	4	0	0
2007	10		3	2	5	2.8	50		40	0	0.06	0	0	5	0	0
2008	10		2	2	4	2.5	40		50	0	0.03	0	0	4	0	0
2009	10		1	1	2	2.5	20		50	0	0.16	1	0	3	1	0
2010		8	3	4	7	2.8		88	57	0	0.05	0	0	7	0	0
Mean	8	9	2	3	5	2.9	38	68	52	6	0.15	0	0	5	0	0

\*Permits include all limited entry, conservation and convention permits.

\*\*Harvest quota in limited entry units during the harvest quota season are the total number of limited entry permits minus the number of cougars harvested during the limited entry season  
Other mortality includes DWR control, roadkill, poaching, found dead, etc.



Total cougar mortality for unit 21b – Fillmore, Pahvant, Utah 2002–2010.

Year	Limited entry permits*	Harvest objective quota**	Sport male harvest	Sport female harvest	Total sport harvest	Mean age	% permits filled	% quota filled	% females	% ≥ 6 yrs old	Cougar treed / day	Wildlife services harvest	Other mortality	Total harvest + mortality	Non-hunt males	Non-hunt females
2002		20	9	8	17	2.6		85	47	0	0.20	0	2	19	1	1
2003	11	7	9	4	13	5.3	73	86	31	33	0.21	0	1	14	0	1
2004	11	7	8	6	14	3.8	64	100	43	10	0.50	0	1	15	0	1
2005	18	15	5	2	7	2.2	17	27	29	0	0.11	1	1	9	1	0
2006	15		8	2	10	2.3	67		20	0	0.10	0	1	11	1	0
2007	10		5	3	8	2.7	80		38	14	0.19	0	0	8	0	0
2008	10		7	4	11	3.2	100		36	9	0.26	0	0	11	0	0
2009	10		6	4	10	5.0	90		40	33	0.25	0	2	12	0	1
2010	10		7	3	10	3.7	70		30	22	0.62	1	0	11	1	0
Mean	12	12	7	4	11	3.4	70	74	35	14	0.27	0	1	12	0	0

\*Permits include all limited entry, conservation and convention permits.

\*\*Harvest quota in limited entry units during the harvest quota season are the total number of limited entry permits minus the number of cougars harvested during the limited entry season  
Other mortality includes DWR control, roadkill, poaching, found dead, etc.

Total cougar mortality for unit 22 – Beaver, Utah 1990–2010.

Year	Limited entry permits*	Harvest objective quota**	Sport male harvest	Sport female harvest	Total sport harvest	Mean age	% permits filled	% quota filled	% females	% ≥ 6 yrs old	Cougar treed / day	Wildlife services harvest	Other mortality	Total harvest + mortality	Non-hunt males	Non-hunt females
1990	27		9	2	11		41		18			2	0	13		
1991	27		7	4	11		41		36			0	0	11		
1992	27		13	3	16		59		19			0	1	17		
1993	31		12	5	17		55		29			0	0	17		
1994	33		14	3	17		52		18			4	0	21		
1995	37		16	9	25		68		36			2	4	31		
1996	37		12	2	14	2.8	38		14	9		0	1	15		
1997	45		11	15	26	3.5	58		58	14		1	2	29		
1998	35		11	15	26	3.0	74		58	12	0.32	0	0	26		
1999	25		10	2	12	3.7	48		17	25	0.37	0	0	12		
2000	25		11	3	14	2.6	56		21	8	0.30	1	0	15		
2001	25		9	5	14	4.5	56		36	23	0.35	1	0	15		
2002	26		9	6	15	3.4	58		40	8	0.32	0	2	17	1	1
2003	25		7	5	12	4.8	48		42	25	0.27	0	0	12	0	0
2004	25		10	5	15	2.8	60		33	9	0.33	0	0	15	0	0
2005	19	15	10	8	18	3.1	53	53	44	8	0.22	0	1	19	0	1
2006	19		9	9	18	4.4	95		50	22	0.18	0	0	18	0	0
2007	18		10	11	21	2.4	117		52	5	0.26	0	0	21	0	0
2008	15		8	6	14	3.5	80		43	8	0.27	0	1	15	1	0
2009	15		12	3	15	3.2	87		20	20	0.29	0	1	16	0	1
2010	12		8	4	12	4.0	83		33	17	0.40	0	1	13	0	1
Mean	26	15	10	6	16	3.4	63	53	34	14	0.30	1	1	18	0	0

\*Permits include all limited entry, conservation and convention permits.

\*\*Harvest quota in limited entry units during the harvest quota season are the total number of limited entry permits minus the number of cougars harvested during the limited entry season  
Other mortality includes DWR control, roadkill, poaching, found dead, etc.

Total cougar mortality for unit 23 – Monroe, Utah 1990–2010.

Year	Limited entry permits*	Harvest objective quota**	Sport male harvest	Sport female harvest	Total sport harvest	Mean age	% permits filled	% quota filled	% females	% ≥ 6 yrs old	Cougar treed / day	Wildlife services harvest	Other mortality	Total harvest + mortality	Non-hunt males	Non-hunt females
1990	27		7	4	11		41		36			0	0	11		
1991	27		11	6	17		63		35			0	0	17		
1992	27		8	7	15		56		47			0	0	15		
1993	34		10	8	18		53		44			2	0	20		
1994	37		18	6	24		65		25			5	2	31		
1995	34		11	5	16		47		31			0	0	16		
1996	24		8	6	14	3.2	58		43	8		2	1	17		
1997	40		9	8	17	3.8	43		47	28		2	1	20		
1998	30		11	4	15	2.6	50		27	0	0.31	5	0	20		
1999	25		5	2	7	2.7	28		29	0	0.42	0	0	7		
2000	15		5	4	9	2.6	60		44	0	0.21	0	0	9		
2001	15		4	2	6	4.4	40		33	40	0.16	0	0	6		
2002	5		2	1	3	2.3	60		33	0	0.21	0	0	3	0	0
2003	5		4	0	4	2.7	80		0	0	0.30	0	0	4	0	0
2004	5		2	3	5	3.5	100		60	0	0.22	2	2	9	2	2
2005	6		6	0	6	2.0	100		0	0	0.22	0	1	7	0	1
2006	4		3	1	4	3.0	100		25	0	0.26	1	4	9	2	3
2007	5		3	0	3	4.3	60		0	33	0.38	1	9	13	3	5
2008	6		3	1	4	2.5	67		25	0	0.44	0	2	6	1	1
2009	9		7	0	7	3.5	67		0	0	0.55	2	3	12	1	4
2010	10		3	3	6	3.5	60		50	0	0.39	0	1	7	0	1
Mean	19		7	3	10	3.1	62		30	7	0.31	1	1	12	1	2

\*Permits include all limited entry, conservation and convention permits.

\*\*Harvest quota in limited entry units during the harvest quota season are the total number of limited entry permits minus the number of cougars harvested during the limited entry season  
Other mortality includes DWR control, roadkill, poaching, found dead, etc.

Total cougar mortality for unit 24 – Mt. Dutton, Utah 1996–2010.

Year	Limited entry permits*	Harvest objective quota**	Sport male harvest	Sport female harvest	Total sport harvest	Mean age	% permits filled	% quota filled	% females	% ≥ 6 yrs old	Cougar treed / day	Wildlife services harvest	Other mortality	Total harvest + mortality	Non-hunt males	Non-hunt females
1996	15		5	3	8	3.0	53		38	0		0	1	9		
1997	20		8	3	11	4.3	55		27	18		1	0	12		
1998	20		2	6	8	4.8	40		75	25	0.45	0	0	8		
1999	15		2	3	5	3.4	33		60	0	0.11	0	0	5		
2000	15		1	5	6	3.2	40		83	0	0.13	0	0	6		
2001	10		3	0	3	4.3	30		0	33	0.60	0	0	3		
2002	5		1	2	3	4.0	60		67	0	0.18	0	0	3	0	0
2003	5		3	1	4	5.0	80		25	0	0.57	0	0	4	0	0
2004	10		1	1	2	4.0	20		50	0	0.12	2	1	5	2	1
2005		10	5	5	10	3.7		100	50	20	0.16	2	1	13	1	1
2006	10		5	5	10	3.4	100		50	11	0.23	1	0	11	0	0
2007	10		5	2	7	2.9	70		29	14	0.24	3	0	10	1	2
2008	11		5	6	11	2.4	100		55	0	0.49	0	0	11	0	0
2009	11		6	4	10	3.6	91		40	0	0.19	0	0	10	0	0
2010	10		3	5	8	4.9	80		63	43	0.83	0	0	8	0	0
Mean	12	10	4	3	7	3.8	61	100	47	11	0.33	1	0	8	0	0

\*Permits include all limited entry, conservation and convention permits.

\*\*Harvest quota in limited entry units during the harvest quota season are the total number of limited entry permits minus the number of cougars harvested during the limited entry season  
Other mortality includes DWR control, roadkill, poaching, found dead, etc.

Total cougar mortality for unit 25a – Plateau, Fishlake, Utah 1990–2010.

Year	Limited entry permits*	Harvest objective quota**	Sport male harvest	Sport female harvest	Total sport harvest	Mean age	% permits filled	% quota filled	% females	% ≥ 6 yrs old	Cougar treed / day	Wildlife services harvest	Other mortality	Total harvest + mortality	Non-hunt males	Non-hunt females
1990	30		10	6	16		53		38			3	3	22		
1991	30		13	4	17		57		24			6	3	26		
1992	30		14	7	21		70		33			2	3	26		
1993	36		23	7	30		83		23			7	3	40		
1994	36		12	11	23		64		48			3	2	28		
1995	43		11	16	27		63		59			4	8	39		
1996	40		15	8	23	3.2	58		35	19		4	0	27		
1997	45		11	20	31	4.2	69		65	21		4	1	36		
1998	25		6	3	9	2.5	36		33	16	0.32	1	0	10		
1999	15		6	3	9	3.1	60		33	4	0.32	0	0	9		
2000	15		9	2	11	2.8	73		18	8	0.33	0	2	13		
2001	15		5	5	10	3.8	67		50	11	0.28	0	1	11		
2002		8	5	6	11	2.1		138	55	0	0.28	3	1	15	1	2
2003	6	4	6	2	8	2.0	67	100	25	0	0.32	0	3	11	0	3
2004	5	4	5	3	8	3.3	20	175	38	17	0.25	0	1	9	1	0
2005	6	8	7	5	12	1.8	67	100	42	0	0.12	0	1	13	1	0
2006	11		7	4	11	2.7	100		36	0	0.13	0	1	12	0	1
2007	11		6	3	9	3.0	82		33	0	0.29	0	3	12	1	0
2008	10		6	3	9	2.7	80		33	11	0.16	0	1	10	0	1
2009	7		6	4	10	3.0	129		40	11	0.20	0	1	11	1	0
2010	7		6	1	7	3.0	71		14	0	0.13	0	1	8	0	1
Mean	21	6	9	6	15	2.9	68	128	37	8	0.24	2	2	18	1	1

\*Permits include all limited entry, conservation and convention permits.

\*\*Harvest quota in limited entry units during the harvest quota season are the total number of limited entry permits minus the number of cougars harvested during the limited entry season  
Other mortality includes DWR control, roadkill, poaching, found dead, etc.

Total cougar mortality for unit 25b – Plateau, Thousand Lakes, Utah 1994–2010.

Year	Limited entry permits*	Harvest objective quota**	Sport male harvest	Sport female harvest	Total sport harvest	Mean age	% permits filled	% quota filled	% females	% ≥ 6 yrs old	Cougar treed / day	Wildlife services harvest	Other mortality	Total harvest + mortality	Non-hunt males	Non-hunt females
1994	10		2	5	7		70		71			0	0	7		
1995	12		5	1	6		50		17			0	2	8		
1996	12		2	2	4	4.3	33		50	19		0	0	4		
1997		10	1	7	8	4.4		80	88	21		0	0	8		
1998		10	6	4	10	3.7		100	40	16	0.32	0	0	10		
1999		10	4	4	8	3.1		80	50	4	0.32	0	0	8		
2000		5	3	1	4	2.8		80	25	8	0.33	0	0	4		
2001		5	3	2	5	6.3		100	40	25	0.25	0	1	6		
2002		4	2	2	4	3.0		100	50	0	0.18	0	0	4	0	0
2003		4	2	2	4	4.0		100	50	0		0	0	4	0	0
2004		10	3	3	6	4.7		60	50	33		0	0	6	0	0
2005		10	3	2	5	3.6		50	40	20	0.06	0	0	5	0	0
2006	10		3	0	3	2.5	30		0	0	0.10	0	0	3	0	0
2007	11		3	1	4	1.3	36		25	0	0.00	0	1	5	0	1
2008	7		1	0	1		14		0		0.20	0	0	1	0	0
2009	5		2	1	3		60		33		0.09	0	0	3	0	0
2010	5		2	1	3	1.0	60		33	0	0.00	0	0	3	0	0
Mean	9	8	3	2	5	3.4	44	83	39	11	0.17	0	0	5	0	0

\*Permits include all limited entry, conservation and convention permits.

\*\*Harvest quota in limited entry units during the harvest quota season are the total number of limited entry permits minus the number of cougars harvested during the limited entry season

Other mortality includes DWR control, roadkill, poaching, found dead, etc.

Total cougar mortality for unit 25c – Plateau, Boulder, Utah 1990–2010.

Year	Limited entry permits*	Harvest objective quota**	Sport male harvest	Sport female harvest	Total sport harvest	Mean age	% permits filled	% quota filled	% females	% ≥ 6 yrs old	Cougar treed / day	Wildlife services harvest	Other mortality	Total harvest + mortality	Non-hunt males	Non-hunt females
1990	10		1	1	2		20		50			0	0	2		
1991	10		3	1	4		40		25			0	2	6		
1992	10		3	1	4		40		25			0	0	4		
1993	13		4	4	8		62		50			0	0	8		
1994	15		2	2	4		27		50			0	0	4		
1995	18		5	1	6		33		17			1	2	9		
1996	20		8	5	13	4.2	65		38	19		1	1	15		
1997		20	11	16	27	4.1		135	59	21		3	4	34		
1998		20	11	11	22	3.2		110	50	16	0.32	1	0	23		
1999		15	6	6	12	3.1		80	50	4	0.32	0	0	12		
2000		10	7	4	11	2.8		110	36	8	0.33	0	0	11		
2001		10	4	7	11	3.3		110	64	13	0.46	0	0	11		
2002		8	6	3	9	3.6		113	33	13	0.27	1	0	10	0	1
2003	10	4	4	3	7	2.7	30	100	43	0	0.57	0	1	8	0	1
2004	18	4	5	9	14	3.6	56	100	64	15	0.43	3	0	17	1	2
2005		15	11	4	15	2.4		100	27	0	0.19	3	3	21	1	1
2006	14		11	4	15	3.8	107		27	8	0.28	0	0	15	0	0
2007	14		6	4	10	2.6	71		40	10	0.50	0	1	11	0	1
2008	13		6	5	11	4.8	69		45	22	0.19	1	1	13	1	1
2009	9		5	4	9	4.8	100		44	29	0.12	1	2	12	2	1
2010	10		5	4	9	4.9	90		44	29	0.25	3	2	14	3	2
Mean	13	12	6	5	11	3.6	58	106	42	14	0.33	1	1	12	1	1

\*Permits include all limited entry, conservation and convention permits.

\*\*Harvest quota in limited entry units during the harvest quota season are the total number of limited entry permits minus the number of cougars harvested during the limited entry season  
Other mortality includes DWR control, roadkill, poaching, found dead, etc.

Total cougar mortality for unit 26 – Kaiparowits, Utah 1997–2010.

Year	Limited entry permits*	Harvest objective quota**	Sport male harvest	Sport female harvest	Total sport harvest	Mean age	% permits filled	% quota filled	% females	% ≥ 6 yrs old	Cougar treed / day	Wildlife services harvest	Other mortality	Total harvest + mortality	Non-hunt males	Non-hunt females
1997		10	1	0	1	6.0	10	10	0	100		1	0	2		
1998		10	2	0	2	4.0		20	0	0	0.06	1	0	3		
1999		10	0	0	0			0			0.13	1	0	1		
2000		10	1	0	1	1.5		10	0	0	0.17	1	0	2		
2001		10	1	1	2	7.0		20	50	50	0.63	0	0	2		
2002		10	0	1	1	1.0		10	100	0	0.04	1	0	2	0	1
2003		10	2	1	3	4.7		30	33	33		0	0	3	0	0
2004		10	1	0	1	1.0		10	0	0		2	0	3	1	0
2005		10	0	1	1			10	100		0.06	0	0	1	0	0
2006		10	1	1	2	3.5		20	50	50	0.21	0	0	2	0	0
2007		10	0	1	1			10	100			0	0	1	0	0
2008		7	0	1	1	2.0		14	100	0	0.16	0	0	1	0	0
2009		7	1	0	1			14	0			0	0	1	0	0
2010		7	4	1	5	2.0		71	20	0		1	0	6	0	0
Mean		9	1	1	2	3.3		18	43	23	0.18	1	0	2	0	0

\*Permits include all limited entry, conservation and convention permits.

\*\*Harvest quota in limited entry units during the harvest quota season are the total number of limited entry permits minus the number of cougars harvested during the limited entry season  
Other mortality includes DWR control, roadkill, poaching, found dead, etc.



Total cougar mortality for unit 27 – Paunsaugunt, Utah 1990–2010.

Year	Limited entry permits*	Harvest objective quota**	Sport male harvest	Sport female harvest	Total sport harvest	Mean age	% permits filled	% quota filled	% females	% ≥ 6 yrs old	Cougar treed / day	Wildlife services harvest	Other mortality	Total harvest + mortality	Non-hunt males	Non-hunt females
1990	14		4	1	5		36		20			0	0	5		
1991	14		5	0	5		36		0			0	0	5		
1992	14		4	1	5		36		20			0	1	6		
1993	14		6	0	6		43		0			0	1	7		
1994	14		3	3	6		43		50			0	0	6		
1995	16		1	1	2		13		50			0	0	2		
1996	20		10	6	16	3.1	80		38	0		2	1	19		
1997		12	8	5	13	4.2		108	38	33		3	0	16		
1998		12	9	5	14	2.8		117	36	8	0.09	0	1	15		
1999		10	5	3	8	4.9		80	38	29	0.20	0	0	8		
2000		10	9	3	12	3.3		120	25	8	0.18	0	1	13		
2001		10	7	3	10	2.7		100	30	10	0.55	2	1	13		
2002		10	4	7	11	4.2		110	64	22	0.16	1	1	13	1	1
2003	12	5	6	4	10	4.3	50	80	40	50	0.36	0	1	11	0	1
2004	12	5	2	4	6	4.8	33	40	67	40	0.10	1	0	7	1	0
2005	11	5	2	0	2	3.0	18	0	0	0	0.02	1	0	3	0	0
2006	8		2	2	4	3.7	50		50	0	0.13	0	0	4	0	0
2007	7		3	3	6	2.5	86		50	0	0.26	0	1	7	0	1
2008	9		2	1	3	1.0	33		33	0	0.26	0	0	3	0	0
2009	9		4	1	5	3.3	56		20	0	0.25	1	0	6	1	0
2010	9		2	1	3	3.0	33		33	0	0.41	0	1	4	0	1
Mean	12	9	5	3	7	3.4	43	84	33	13	0.23	1	0	8	0	0

\*Permits include all limited entry, conservation and convention permits.

\*\*Harvest quota in limited entry units during the harvest quota season are the total number of limited entry permits minus the number of cougars harvested during the limited entry season  
Other mortality includes DWR control, roadkill, poaching, found dead, etc.

Total cougar mortality for unit 28 – Panguitch Lake, Utah 1990–2010.

Year	Limited entry permits*	Harvest objective quota**	Sport male harvest	Sport female harvest	Total sport harvest	Mean age	% permits filled	% quota filled	% females	% ≥ 6 yrs old	Cougar treed / day	Wildlife services harvest	Other mortality	Total harvest + mortality	Non-hunt males	Non-hunt females
1990	14		3	3	6		43		50			1	0	7		
1991	14		4	2	6		43		33			0	0	6		
1992	14		3	1	4		29		25			0	0	4		
1993	14		9	3	12		86		25			0	1	13		
1994	14		6	4	10		71		40			0	0	10		
1995	17		8	5	13		76		38			0	0	13		
1996	20		7	7	14	2.6	70		50	0		0	0	14		
1997	20		10	5	15	2.9	75		33	7		0	2	17		
1998	20		5	7	12	3.5	60		58	33	0.44	3	2	17		
1999	15		5	5	10	3.3	67		50	0	0.51	1	0	11		
2000	15		7	2	9	3.6	60		22	25	0.33	0	0	9		
2001		10	6	4	10	2.8		100	40	10	0.77	2	0	12		
2002		13	6	9	15	3.6		115	60	21	0.27	0	0	15	0	0
2003	12	6	7	6	13	2.9	67	83	46	0	0.19	2	2	17	2	2
2004	13	6	7	10	17	3.6	85	100	59	21	0.50	0	0	17	0	0
2005	11	8	7	4	11	2.8	36	88	36	11	0.31	0	1	12	1	0
2006	13		9	5	14	3.3	108		36	0	0.29	0	0	14	0	0
2007	12		8	6	14	2.6	117		43	8	0.25	1	1	16	2	0
2008	11		8	3	11	3.4	100		27	10	0.38	0	0	11	0	0
2009	11		6	5	11	2.8	100		45	0	0.41	0	0	11	0	0
2010	10		6	4	10	3.3	100		40	10	0.21	0	1	11	1	0
Mean	14	9	7	5	11	3.1	73	97	41	10	0.37	0	0	12	1	0

\*Permits include all limited entry, conservation and convention permits.

\*\*Harvest quota in limited entry units during the harvest quota season are the total number of limited entry permits minus the number of cougars harvested during the limited entry season  
Other mortality includes DWR control, roadkill, poaching, found dead, etc.

Total cougar mortality for unit 29 – Zion, Utah 1990–2010.

Year	Limited entry permits*	Harvest objective quota**	Sport male harvest	Sport female harvest	Total sport harvest	Mean age	% permits filled	% quota filled	% females	% ≥ 6 yrs old	Cougar treed / day	Wildlife services harvest	Other mortality	Total harvest + mortality	Non-hunt males	Non-hunt females
1990	25		5	5	10		40		50			0	0	10		
1991	25		10	1	11		44		9			0	0	11		
1992	25		7	1	8		32		13			0	0	8		
1993	25		10	6	16		64		38			5	1	22		
1994	33		2	4	6		18		67			1	0	7		
1995	38		17	8	25		66		32			1	2	28		
1996	50		12	9	21	3.5	42		43	19		3	2	26		
1997	50		16	14	30	3.4	60		47	17		0	2	32		
1998	50		15	9	24	2.9	48		38	13	0.26	0	2	26		
1999	50		4	9	13	2.6	26		69	7	0.26	0	0	13		
2000	40		7	6	13	3.1	33		46	14	0.18	2	1	16		
2001	40		6	4	10	3.5	25		40	0	0.29	1	2	13		
2002	15	15	9	14	23	3.4	60	93	61	18	0.26	5	1	29	2	1
2003	15	15	9	10	19	3.5	33	93	53	0	0.76	4	0	23	1	3
2004	1	28	4	14	18	2.9		64	78	8	0.05	2	0	20	1	1
2005		28	5	3	8	3.0		29	38	25	0.15	0	2	10	1	1
2006		28	10	7	17	3.1		61	41	13	0.19	0	0	17	0	0
2007		28	10	7	17	4.2		61	41	27	0.17	1	1	19	0	1
2008		28	8	8	16	3.0		57	50	0	0.26	1	0	17	1	0
2009		21	6	9	15	3.3		71	60	9	0.23	2	2	19	0	4
2010		21	8	6	14	2.3		67	43	0	0.11	1	2	17	0	3
Mean	32	24	9	7	16	3.2	42	66	45	11	0.24	1	1	18	1	2

\*Permits include all limited entry, conservation and convention permits.

\*\*Harvest quota in limited entry units during the harvest quota season are the total number of limited entry permits minus the number of cougars harvested during the limited entry season  
Other mortality includes DWR control, roadkill, poaching, found dead, etc.

Total cougar mortality for unit 30ab – Pine Valley, West Pine Valley/Commanche, Utah 1990–2007.

Year	Limited entry permits*	Harvest objective quota**	Sport male harvest	Sport female harvest	Total sport harvest	Mean age	% permits filled	% quota filled	% females	% ≥ 6 yrs old	Cougar treed / day	Wildlife services harvest	Other mortality	Total harvest + mortality	Non-hunt males	Non-hunt females
1990	40		14	1	15		38		7			1	2	18		
1991	40		7	5	12		30		42			0	1	13		
1992	40		7	6	13		33		46			0	1	14		
1993	40		11	4	15		38		27			0	1	16		
1994	42		10	10	20		48		50			0	0	20		
1995	50		12	6	18		36		33			0	0	18		
1996	50		11	6	17	2.6	34		35	0		0	1	18		
1997		40	21	16	37	3.8		93	43	23		0	2	39		
1998		40	13	16	29	2.3		73	55	14	0.21	0	0	29		
1999		30	11	11	22	2.8		73	50	13	0.41	0	0	22		
2000		30	11	8	19	2.6		63	42	11	0.18	0	0	19		
2001		25	8	13	21	3.5		84	62	17	0.32	0	0	21		
2002	20	10	7	4	11	2.5	40	30	36	10	0.18	2	1	14	0	1
2003	20	10	11	8	19	2.7	30	130	42	0	0.10	0	0	19	0	0
2004	20	10	10	5	15	2.7	35	80	33	8	0.18	0	1	16	0	1
2005	18	10	6	4	10	2.0	39	30	40	0	0.16	0	1	11	0	0
2006	15		11	5	16	3.5	107		31	13	0.13	0	0	16	0	0
2007	14		7	3	10	3.4	71		30	11	0.12	0	0	10	0	0
Mean	31	23	10	7	18	2.9	44	73	39	10	0.20	0	1	19	0	0

\*Permits include all limited entry, conservation and convention permits.

\*\*Harvest quota in limited entry units during the harvest quota season are the total number of limited entry permits minus the number of cougars harvested during the limited entry season  
Other mortality includes DWR control, roadkill, poaching, found dead, etc.

Total cougar mortality for unit 30c – Pine Valley, Browse, Utah 1996–2007.

Year	Limited entry permits*	Harvest objective quota**	Sport male harvest	Sport female harvest	Total sport harvest	Mean age	% permits filled	% quota filled	% females	% ≥ 6 yrs old	Cougar treed / day	Wildlife services harvest	Other mortality	Total harvest + mortality	Non-hunt males	Non-hunt females
1996	15		4	1	5	3.0	33		20	0		0	0	5		
1997		10	3	1	4	3.3		40	25	23		0	0	4		
1998		10	3	4	7	3.8		70	57	14	0.21	0	0	7		
1999		10	1	1	2	2.8		20	50	13	0.41	0	0	2		
2000		10	1	0	1	2.6		10	0	11	0.18	0	0	1		
2001		10	4	3	7	2.3		70	43	0	0.25	0	0	7		
2002		10	2	0	2	1.5		20	0	0	0.19	0	0	2	0	0
2003		10	0	0	0			0			0.00	0	0	0	0	0
2004		10	2	1	3	1.7		30	33	0		0	0	3	0	0
2005		10	1	0	1	3.0		10	0	0	0.27	0	0	1	0	0
2006	8		2	3	5	3.5	63		60	0	0.11	0	0	5	0	0
2007	7		2	1	3	1.7	43		33	0	0.02	0	0	3	0	0
Mean	10	10	2	1	3	2.6	46	30	29	6	0.18	0	0	3	0	0

\*Permits include all limited entry, conservation and convention permits.

\*\*Harvest quota in limited entry units during the harvest quota season are the total number of limited entry permits minus the number of cougars harvested during the limited entry season  
Other mortality includes DWR control, roadkill, poaching, found dead, etc.

Total cougar mortality for unit 30 – Pine Valley, Utah 2008–2010.

Year	Limited entry permits*	Harvest objective quota**	Sport male harvest	Sport female harvest	Total sport harvest	Mean age	% permits filled	% quota filled	% females	% ≥ 6 yrs old	Cougar treed / day	Wildlife services harvest	Other mortality	Total harvest + mortality	Non-hunt males	Non-hunt females
2008	19		10	7	17	3.1	89		41	13	0.23	0	0	17	0	0
2009	19		11	9	20	3.1	105		45	5	0.31	0	0	20	0	0
2010	19		7	6	13	3.6	68		46	0	0.13	0	1	14	0	1
Mean	19		9	7	17	3.3	88		44	6	0.22	0	0	17	0	0

\*Permits include all limited entry, conservation and convention permits.

\*\*Harvest quota in limited entry units during the harvest quota season are the total number of limited entry permits minus the number of cougars harvested during the limited entry season

Other mortality includes DWR control, roadkill, poaching, found dead, etc.

Subunits were recombined in 2008.