

UTAH COUGAR ANNUAL REPORT 2011



Publication No. 11-29



UTAH COUGAR ANNUAL REPORT 2011

Prepared by:

Heather H. Bernalles
Biometrician

Justin Dolling
Game Mammals Program Coordinator

John Shivik
Mammals Program Coordinator

and

Kevin Bunnell
Mammals Program Coordinator

Publication No. 11-29

Annual Performance Report for Federal Aid Project W-65-M, segments 59 and 60

State of Utah
Department of Natural Resources
DIVISION OF WILDLIFE RESOURCES

An Equal Opportunity Employer

James F. Karpowitz
Director

TABLE OF CONTENTS

Introduction	1
Methods	2
Results	2
Permits	3
Statewide harvest and mortality	4
Sport harvest	7
Survival.....	9
Guiding	9
Pursuit	10
Livestock depredation	14
Appendix: Historic cougar harvest by hunt unit	15

INTRODUCTION

The cougar harvest report presents cougar harvest and hunter effort trends across the state of Utah, based on data collected from cougar hunters. This report represents the cougar portion of Federal Aid Project W-65-M, segments 59 and 60, grant agreement periods October 1, 2010 through September 30, 2011 and October 1, 2011 through September 30, 2012, respectively. This Federal Aid project covers cougar hunting season 2010-2011.

For purposes of effective management, the state of Utah is divided into 30 wildlife management units, which are the same for all hunted species. Some of these units were divided further into subunits for cougar hunting in order to direct hunter pressure, resulting in a total of 49 units and subunits in 2010-2011. Eleven of these units were managed through a limited entry permit system, where a hunter had to apply for and draw from a pool of limited permits. The hunter was allowed to hunt the entire limited entry season, or until the permit was filled. Fourteen units were managed through a harvest objective system, where a harvest quota was set and an unlimited number of hunters could hunt. The unit remained open until either the harvest quota was reached or the season closed. 24 units were managed through a split hunting season system, with the first half of the season managed through a limited entry permit system. Then, if all of the limited entry permits were not filled by the close of the limited entry season, the remaining season was managed through a harvest objective system. At this point, the harvest quota was set as the number of permits that remained unfilled at the close of the limited entry season. Limited entry permits on split units became valid statewide harvest objective permits if hunters did not fill their tags during the limited entry season.

Applicants who drew a limited entry permit for the 2010-2011 cougar seasons were required to wait 3 years before applying for another permit. The waiting period did not apply to harvest objective permit holders. The season limit was one cougar, and females with kittens, or kittens with spots, were not legal to harvest.

Cougar pursuit was allowed in all 49 cougar subunits during the 2010-2011 season, provided pursuers obtained a valid cougar pursuit permit. An unlimited number of pursuit-only permits, valid on any open unit statewide, were available. Hunters who obtained a limited entry or harvest objective permit could pursue cougar on the unit for which the permit was valid.

Season Dates

For the 2010-2011 year, the limited entry hunting season for limited entry-only units opened November 17, 2010 and closed May 31, 2011. The limited entry hunting season in split units opened November 17, 2010 and closed February 28, 2011, at which time these units became harvest objective units from March 7, 2011 through May 31, 2011. The harvest objective season for harvest objective-only units opened November 17, 2010 and closed November 12, 2011. Cougar pursuit season dates matched those of the hunt season dates in all 49 units, except for the harvest objective units, in which units were closed to pursuit from August 15, 2011 through October 30, 2011.

METHODS

All successful hunters were required to have their cougar checked by a Division of Wildlife Resources office or officer within 48 hours of harvest. At that time, tooth samples were collected, and a permanent tag affixed. Cougar harvest and hunter effort information was also collected at that time. Teeth were sectioned and cementum annuli counted by an independent lab, to estimate age of harvested cougar. Survival rates were estimated using the Chapman-Robson estimator.

Harvest data from depredating cougar were taken from damage reports received from USDA-APHIS Wildlife Services. Livestock operators could kill damaging cougar and were required to have the carcass checked by a Division officer within 48 hours. Harvest information was collected at that time. Other mortality includes DWR control, roadkill, poaching, found dead, etc.

In past years, a cougar harvest mail questionnaire was sent each spring to all cougar permit holders. This questionnaire was used to obtain hunter effort information from those who did not harvest a cougar. Beginning with the 2001-2002 cougar season, this questionnaire was discontinued. Total hunter effort could be estimated by assuming that the average amount of time spent afield by successful hunters was similar to the time spent afield by non-successful hunters. But since the validity of this assumption is not known, we no longer estimate hunter effort data for this report. Cougar pursuit information was obtained using a random telephone survey of a statistically valid sample of cougar pursuit permit holders.

This annual report presents the most complete and accurate summary of cougar harvest data available at the time of publication. Occasionally, we will adjust a previous years' harvest numbers in a subsequent report as more data were made available after publication. This is typically the case with counts of Wildlife Services (depredation) mortality, and only rarely will counts of hunter harvest need adjustment. Also, age data from cougars harvested during the most recent summer or fall seasons are not available at the time this report is published each year. Therefore, age data and survival information are tentative for the current year, and will be finalized in the following year's report. The most recent annual report should always be the most correct and accurate.

RESULTS

For the 2010-2011 cougar season, 383 limited entry permits and 785 harvest objective permits were sold. Total limited entry permits included 360 limited entry permits, 16 regional or statewide conservation permits, and 7 unit convention permits. A total of 344 cougars were harvested during the 2010-2011 sport season. Success rate on limited entry units (including split units) was 69%, while the percent of quota that was filled on harvest objective units was 64%. 10 of the cougar units filled 100% of their limited entry permits or met their harvest objective quota and closed early. There were 20 cougars taken by Wildlife Services during the 2010-2011 season, and 36 other mortalities (roadkill, found dead, DWR control). A total of 909 cougar pursuit permits were sold and 761 pursuers went afield during the 2010-2011 cougar pursuit season. Cougars treed per pursuer was 8.1, with 0.25 cougars treed per day-afield.

Cougar permits sold since the implementation of limited entry hunts, Utah 1990–2011.

Year	Limited entry permits				Harvest objective permits			Total permits
	Resident	Nonresident	Cons/Conv	Total	Resident	Nonresident	Total	
1990	385	142	—	527	—	—	—	527
1991	383	142	—	525	—	—	—	525
1992	383	142	—	525	—	—	—	525
1993	431	160	—	591	—	—	—	591
1994	479	180	—	659	—	—	—	659
1995	559	232	—	791	—	—	—	791
1996	611	261	—	872	—	—	—	872
1997	425	170	—	595	—	—	901	1496
1998	381	128	—	509	472	199	671	1180
1999	337	109	—	446	386	189	575	1021
2000	259	84	—	343	374	170	544	887
2001	206	66	—	272	880	290	1170	1442
2002	228	30	8	266	897	300	1197	1463
2003	326	36	12	374	685	266	951	1325
2004	215	29	20	264	533	209	742	1006
2005	233	30	10	273	841	290	1131	1404
2006	356	38	12	406	464	222	686	1092
2007	313	35	18	366	600	245	845	1211
2008	278	33	26	337	587	238	825	1162
2009	265	33	25	323	543	220	763	1086
2010	256	31	26	313	566	192	758	1071
2011	323	37	23	383	595	190	785	1168
Mean	347	98	18	453	602	230	836	1023

*Combination of limited entry and harvest objective hunting initiated in 1997.

Statewide historical cougar harvest statistics, Utah 1971–1989.

Year	Hunters afield	Sport harvest	Hunter-days afield	Hunter-days / hunter	Hunter-days / cougar	Cougars / hunter
1971	207	94	—	—	—	0.45
1972	92	51	—	—	—	0.55
1973	108	66	—	—	—	0.61
1974	176	103	963	5.5	9.3	0.59
1975	286	176	1149	4.0	6.5	0.62
1976	332	167	2379	7.2	14.2	0.50
1977	334	177	2098	6.3	11.9	0.53
1978	408	210	2443	6.0	11.6	0.51
1979	436	265	2312	5.3	8.7	0.61
1980	442	205	3081	7.0	15.0	0.46
1981	411	185	2496	6.1	13.5	0.45
1982	432	205	3526	8.2	17.2	0.47
1983	435	172	3728	8.6	21.7	0.40
1984	484	211	3874	8.0	18.4	0.44
1985	488	182	4839	9.9	26.6	0.37
1986	469	200	3785	8.1	18.9	0.43
1987	486	197	4657	9.6	23.6	0.41
1988	662	247	5690	8.6	23.0	0.37
1989	612	231	5811	9.5	25.2	0.38

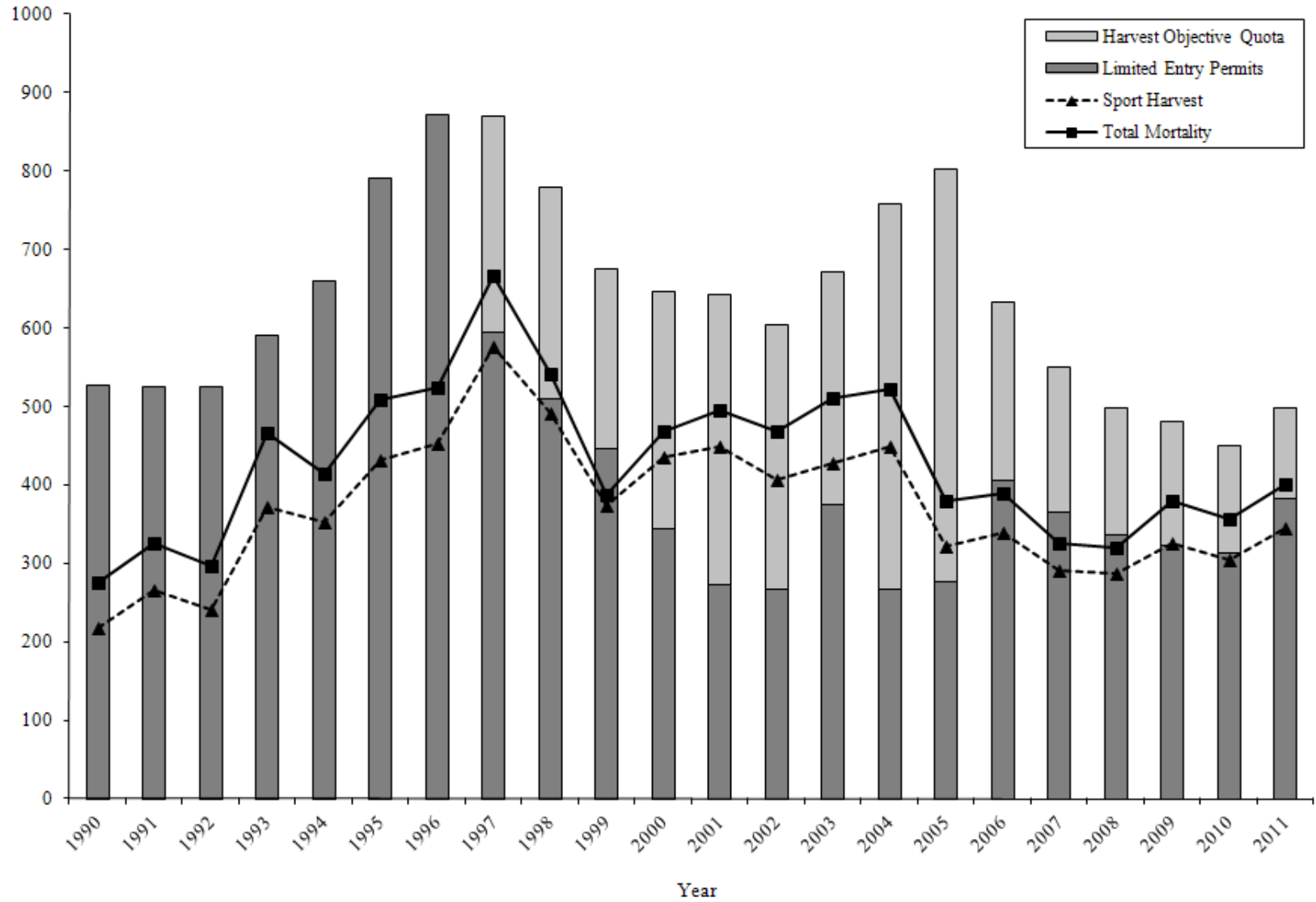
Statewide cougar harvest and mortality statistics, Utah 1990–2011.

Year	Limited entry permits*	Harvest objective quota	Sport male harvest	Sport female harvest	Total sport harvest	Mean age	% permits filled	% quota filled	% females	% ≥ 6 yrs old	Cougar treed / day	Adult survival (%)	Wildlife services harvest	Other mortality	Total harvest + mortality
1990	527	—	146	71	217	—	41	—	33	—	0.41	—	48	10	275
1991	525	—	184	81	265	—	50	—	31	—	0.49	—	38	22	325
1992	525	—	160	81	241	—	46	—	34	—	0.45	—	34	22	297
1993	591	—	260	112	372	—	63	—	30	—	0.49	—	53	42	467
1994	659	—	216	136	352	—	53	—	39	—	0.57	—	53	10	415
1995	791	—	262	169	431	—	54	—	39	—	—	—	54	24	509
1996	872	—	269	183	452	3.5	52	—	40	17	0.48	67	33	39	524
1997	595	275	297	279	576	3.8	56	88	48	20	0.33	67	40	50	666
1998	509	270	261	231	492	3.2	54	80	47	15	0.36	63	27	23	542
1999	446	230	206	167	373	3.1	49	64	45	10	0.30	62	13	1	387
2000	343	304	258	177	435	2.9	60	81	41	10	0.28	60	25	9	469
2001	272	371	242	207	449	3.3	52	35	46	13	0.30	63	27	20	496
2002	266	339	222	184	406	3.1	58	74	45	12	0.21	61	45	17	468
2003	374	297	251	175	427	3.6	58	77	41	13	0.29	63	53	30	510
2004	266	492	219	229	448	3.4	55	66	51	14	0.23	61	47	28	523
2005	276	527	190	131	321	2.5	45	36	41	7	0.17	54	38	21	380
2006	406	227	202	137	339	3.2	59	45	40	9	0.19	62	35	15	389
2007	366	185	173	117	291	2.9	59	42	40	11	0.22	60	9	25	325
2008	337	162	171	116	287	3.0	53	59	40	7	0.27	57	15	18	320
2009	323	158	207	118	325	3.3	70	61	36	10	0.26	62	22	32	379
2010	314	136	199	104	304	3.2	65	71	34	7	0.24	58	18	35	357
2011	383	116	210	134	344	3.7‡	69	64	40	12	0.25	64‡	20	36	400
Mean	453	273	218	152	370	3.2	56	63	41	12	0.32	61	34	24	428

*Permits include all limited entry, sportsman, conservation and convention permits.

‡Preliminary data - will be finalized in next year's annual report after all age data becomes available.

Statewide cougar mortality and harvest objectives, 1990 through 2011.



Statewide cougar sport harvest statistics by unit / subunit, Utah 2011.

Unit	Limited entry permits	Harvest quota	Sport male harvest	Sport female harvest	Total sport harvest	% permits and harvest quota filled*	% females	% adult females	
Beaver	13	—	10	6	16	115	—	38	38
Book Cliffs, Bitter Creek	15	—	4	3	7	47	—	43	14
Book Cliffs, Rattlesnake Canyon	—	2	2	0	2	—	100	0	0
Box Elder, Desert	6	—	1	1	2	33	—	50	50
Box Elder, Pilot Mountain	—	2	1	1	2	—	100	0	0
Box Elder, Raft River	5	—	4	0	4	80	—	0	0
Cache	15	—	7	3	10	67	—	30	20
Central Mountains, Nebo	15	—	9	10	19	127	—	53	47
Central Mountains, Nebo-West Face	25	—	9	8	17	68	—	47	35
Central Mountains, Northeast Manti	13	—	4	6	10	77	—	60	40
Central Mountains, Northwest Manti	13	—	7	3	10	77	—	30	30
Central Mountains, Southeast Manti	11	—	9	2	11	91	—	18	18
Central Mountains, Southwest Manti	8	—	7	1	8	100	—	13	13
Chalk Creek/Kamas	10	—	4	5	9	60	—	56	33
East Canyon	4	—	2	1	3	75	—	33	33
East Canyon, Davis	5	—	0	0	0	0	—	—	—
Fillmore, Oak Creek	8	—	1	3	4	50	—	75	25
Fillmore, Pahvant	9	—	9	2	11	89	—	18	9
Henry Mountains	—	3	0	1	1	—	33	0	0
Kaiparowits	—	6	1	1	2	—	33	50	50
La Sal Mountains	—	5	3	2	5	—	100	40	40
Monroe	12	—	1	7	8	67	—	88	75
Morgan-Rich	6	—	5	1	6	100	—	17	17
Mt. Dutton	16	—	6	2	8	50	—	25	25
Nine Mile	—	12	5	1	6	—	50	17	17
North Slope, Three Corners	—	10	3	3	6	—	60	50	50
North Slope, Summit/West Daggett	—	10	2	3	5	—	50	60	20
Ogden	15	—	3	3	6	40	—	50	17
Oquirrh-Stansbury	4	—	1	1	2	50	—	50	50
Panguitch Lake	11	—	8	5	13	100	—	38	38
Paunsaugunt	9	—	4	3	7	78	—	43	29

*Percent permits filled does not include any harvest taken with conservation permits.

Statewide cougar sport harvest statistics by unit / subunit, Utah 2011 (cont.).

Unit	Limited entry permits	Harvest quota	Sport male harvest	Sport female harvest	Total sport harvest	% permits and harvest quota filled*	% females	% adult females	
Pine Valley	15	—	9	6	15	100	—	40	33
Plateau, Boulder	16	—	9	5	14	88	—	36	21
Plateau, Fishlake	8	—	6	5	11	125	—	45	45
Plateau, Thousand Lakes	10	—	2	1	3	30	—	33	33
San Juan, Abajo	10	—	4	0	4	40	—	0	0
San Juan, Elk Ridge	—	10	8	2	10	—	100	20	0
San Rafael	—	3	2	1	3	—	100	33	33
South Slope, Vernal/Diamond	20	—	0	1	1	5	—	100	100
South Slope, Yellowstone	8	—	2	1	3	38	—	33	33
Southwest Desert	6	—	2	1	3	50	—	33	33
Wasatch Mountains, Avintaquin	—	13	3	3	6	—	46	50	50
Wasatch Mountains, Cascade	—	10	2	6	8	—	80	75	75
Wasatch Mountains, Currant Creek	7	—	3	0	3	43	—	0	0
Wasatch Mountains, Timpanogos	—	12	3	2	5	—	42	40	40
Wasatch Mountains, West	11	—	9	5	14	91	—	36	29
West Desert, Mountain Ranges	4	—	2	1	3	75	—	33	0
West Desert, Tintic-Vernon	4	—	2	0	2	50	—	0	0
Zion	—	18	10	6	16	—	89	38	25
Total**	383	116	210	134	344	69	64	39	30

*Percent permits filled does not include any harvest taken with conservation permits.

**Total permits includes 14 regionwide conservation permits, 1 statewide sportsman permit, and 1 statewide conservation permit that are not included in the unit-by-unit permit totals; 16 permits were filled and are added into harvest by unit.

Adult cougar survival based on the Chapman-Robson estimator, Utah 1996–2011.

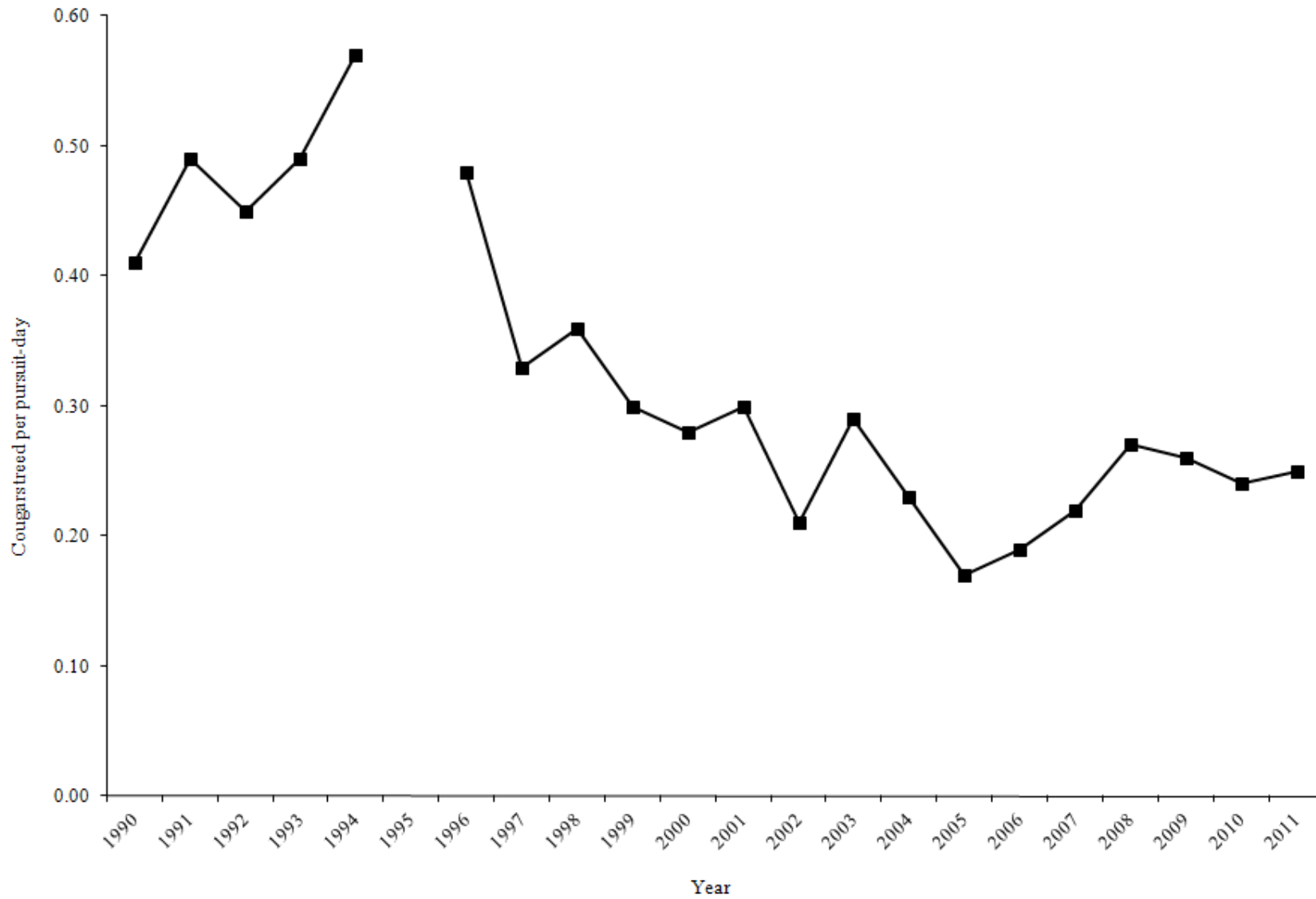
Year	n	Adult survival (%)	95% confidence interval
1996	316	66.5	63.5–69.5
1997	517	67.3	64.9–69.6
1998	377	62.5	59.5–65.5
1999	275	61.8	58.2–65.3
2000	301	59.7	56.2–63.3
2001	357	62.6	59.5–65.6
2002	283	60.3	56.7–63.9
2003	346	62.9	59.8–66.0
2004	321	61.4	58.1–64.8
2005	209	54.3	49.7–58.9
2006	248	62.1	58.4–65.8
2007	198	60.1	55.8–64.4
2008	228	56.9	52.7–61.2
2009	278	61.9	58.4–65.4
2010	266	57.6	53.7–61.5
2011‡	308	64.2	60.0–67.4

‡Preliminary data - will be finalized in next year’s annual report after all age data becomes available.

Guiding statistics for Utah cougar season, 2002–2011.

Year	Total harvest	Harvest with guide	% harvest with guide
2002	406	285	70.2
2003	427	291	68.1
2004	448	290	64.7
2005	321	202	62.9
2006	339	228	67.3
2007	291	194	66.7
2008	282	159	56.4
2009	325	199	61.2
2010	304	186	61.2
2011	344	196	57.0

Statewide cougars treed per pursuit-day, 1990 through 2011.



Statewide cougar pursuit statistics, 1979–2011.

Year	n	Permits	% pursuing cougars	% pursuers treeing cougars	Cougars treed / pursuit-day	Cougars treed / pursuer
1979	60	114	72	83	0.24	4.6
1980	19	91	68	92	0.17	1.6
1981	—	95	—	—	—	—
1982	63	96	87	78	0.40	3.3
1983	41	88	83	76	0.24	3.6
1984	90	126	81	82	0.35	6.2
1985	51	86	86	86	0.33	6.4
1986	49	90	98	90	0.37	6.1
1987	66	141	99	77	0.38	6.0
1988	99	147	89	90	0.38	8.0
1989	123	204	72	90	0.40	8.4
1990	282	355	92	88	0.41	7.8
1991	319	364	90	98	0.49	10.8
1992	364	524	80	96	0.45	4.3
1993	347	570	88	97	0.49	5.9
1994	279	552	87	97	0.57	9.4
1995	—	505	—	—	—	—
1996	378	627	78	98	0.48	10.5
1997	298	638	87	88	0.33	9.1
1998	236	635	86	91	0.36	11.0
1999	275	630	92	74	0.30	3.8
2000	222	545	86	68	0.28	3.1
2001	222	692	84	63	0.30	7.3
2002	—	681	—	—	0.21	—
2003	250	703	80	81	0.29	4.3
2004	199	772	83	73	0.23	3.1
2005	285	703	84	80	0.17	5.5
2006	252	730	88	85	0.19	6.6
2007	208	714	86	74	0.22	6.2
2008	256	880	86	80	0.27	7.4
2009	214	855	86	73	0.26	6.1
2010	224	900	81	73	0.24	4.9
2011	282	909	84	93	0.25	8.1
Mean	202	478	85	84	0.32	6.3

*In 1999, the combined cougar/bear pursuit permit was split into separate permits for each species.

Statewide cougar pursuit statistics by unit / subunit, Utah 2011.

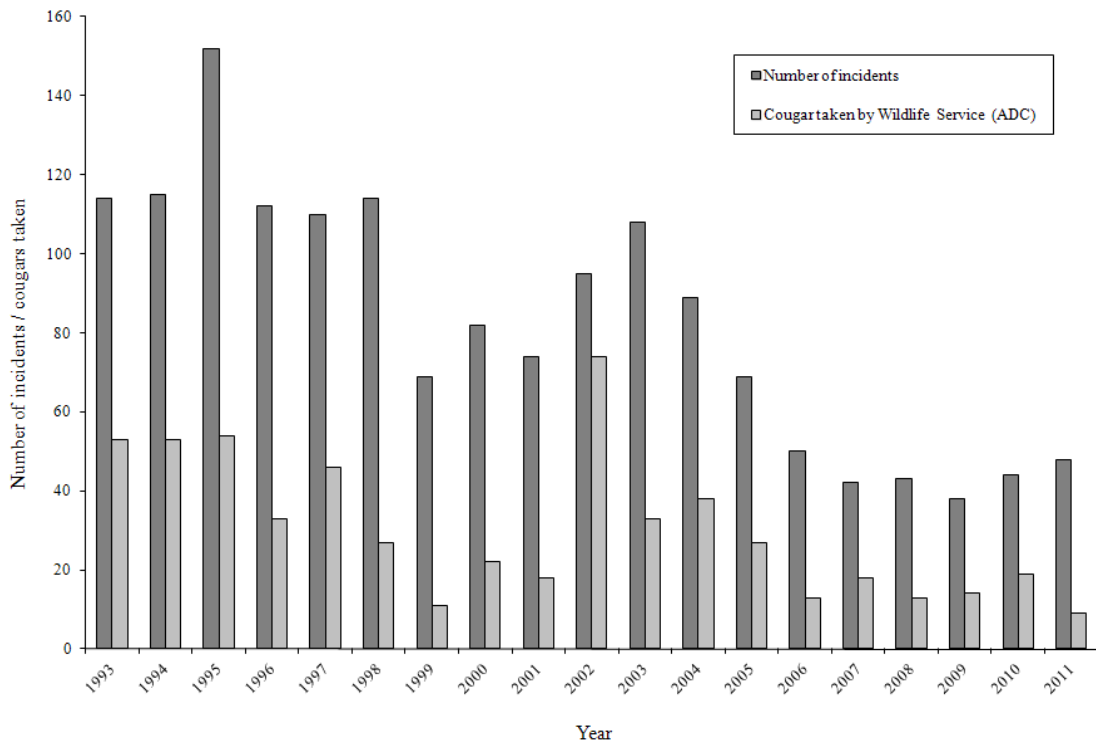
Unit	n	Pursuers afield	Pursuer days afield	Males treed	Females treed	Kittens treed	Unknown treed	Total cougars treed	Cougars treed / day	Cougars treed / pursuer
Beaver	23	74	1125	93	239	32	13	377	0.3	5.1
Book Cliffs, Bitter Creek	11	35	367	26	55	10	0	91	0.2	2.6
Book Cliffs, Rattlesnake Canyon	2	6	474	39	16	23	0	78	0.2	13.0
Box Elder, Desert	7	23	535	16	97	13	3	129	0.2	5.6
Box Elder, Pilot Mountain	2	6	13	0	3	0	0	3	0.2	0.5
Box Elder, Raft River	14	45	825	64	119	6	13	202	0.2	4.5
Cache	12	39	816	42	74	52	0	168	0.2	4.3
Central Mountains, Nebo	18	58	1322	148	106	23	0	277	0.2	4.8
Central Mountains, Nebo-West Face	5	16	280	10	32	6	0	48	0.2	3.0
Central Mountains, Northeast Manti	10	32	638	42	90	0	3	135	0.2	4.2
Central Mountains, Northwest Manti	11	35	519	52	84	19	0	155	0.3	4.4
Central Mountains, Southeast Manti	19	61	1863	177	190	16	0	383	0.2	6.3
Central Mountains, Southwest Manti	13	42	1006	55	103	6	3	167	0.2	4.0
Chalk Creek/Kamas	12	39	574	42	155	0	6	203	0.4	5.2
East Canyon	2	6	64	3	10	0	0	13	0.2	2.2
East Canyon, Davis	2	6	242	6	0	0	0	6	0.0	1.0
Fillmore, Oak Creek	7	23	155	3	13	3	0	19	0.1	0.8
Fillmore, Pahvant	14	45	848	90	158	13	6	267	0.3	5.9
Henry Mountains	2	6	26	0	3	0	0	3	0.1	0.5
Kaiparowits	3	10	55	13	3	0	0	16	0.3	1.6
La Sal Mountains	3	10	177	29	42	0	0	71	0.4	7.1
Monroe	13	42	632	81	106	10	0	197	0.3	4.7
Morgan-Rich	6	19	413	13	35	6	0	54	0.1	2.8
Mt. Dutton	7	23	287	10	29	23	0	62	0.2	2.7
Nine Mile	4	13	210	29	48	0	0	77	0.4	5.9
North Slope, Three Corners	10	32	371	32	32	0	0	64	0.2	2.0
North Slope, West Daggett/Summit	2	6	39	0	0	0	0	0	0.0	0.0
Ogden	8	26	445	32	48	10	6	96	0.2	3.7

Statewide cougar pursuit statistics by unit / subunit, Utah 2011 (cont.).

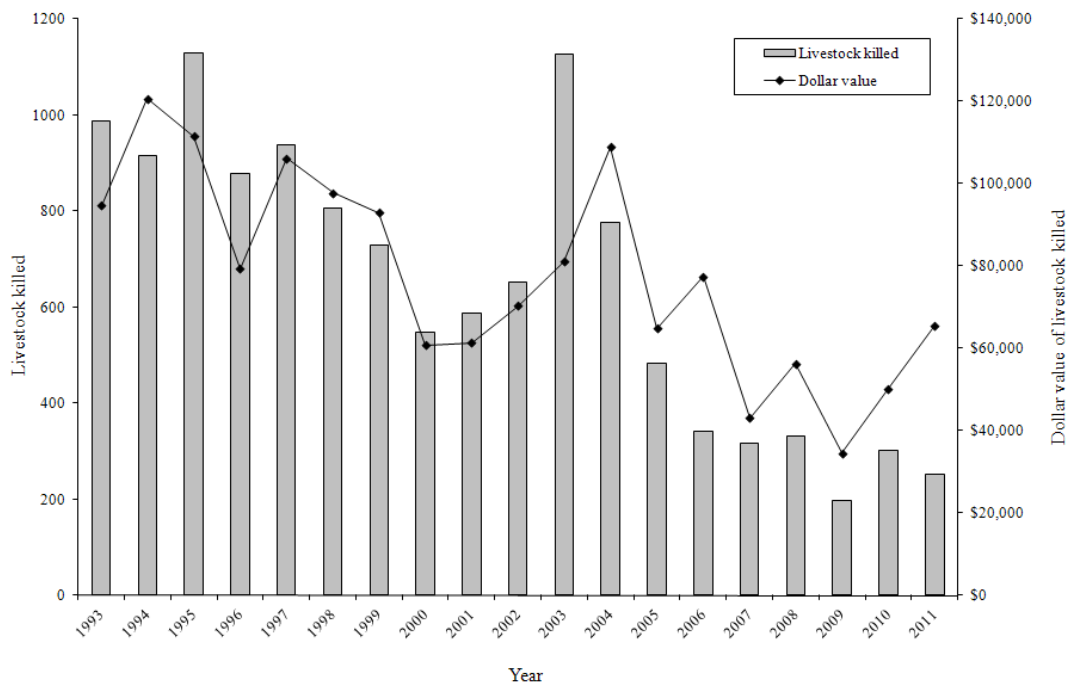
Unit	n	Pursuers afield	Pursuer days afield	Males treed	Females treed	Kittens treed	Unknown treed	Total cougars treed	Cougars treed / day	Cougars treed / pursuer
Oquirrh-Stansbury	14	45	935	61	119	19	10	209	0.2	4.6
Panguitch Lake	13	42	374	39	81	3	16	139	0.4	3.3
Paunsaugunt	10	32	664	93	116	6	45	260	0.4	8.1
Pine Valley	12	39	419	55	90	0	10	155	0.4	4.0
Plateau, Boulder	13	42	329	45	68	16	0	129	0.4	3.1
Plateau, Fishlake	21	68	1164	139	164	10	3	316	0.3	4.6
Plateau, Thousand Lakes	3	10	161	10	16	0	0	26	0.2	2.6
San Juan, Abajo	3	10	184	39	16	6	3	64	0.3	6.4
San Juan, Elk Ridge	2	6	77	10	6	0	0	16	0.2	2.7
San Rafael	1	3	161	0	3	6	10	19	0.1	6.3
South Slope, Vernal/Bonanza/Diamond Mtn	16	52	1521	148	174	16	0	338	0.2	6.5
South Slope, Yellowstone	3	10	122	0	23	0	0	23	0.2	2.3
Southwest Desert	5	16	464	10	26	0	3	39	0.1	2.4
Wasatch Mountains, Avintaquin	12	39	390	29	61	0	0	90	0.2	2.3
Wasatch Mountains, Cascade	9	29	400	10	64	3	0	77	0.2	2.7
Wasatch Mountains, Currant Creek	9	29	429	29	52	10	0	91	0.2	3.1
Wasatch Mountains, Timpanogos	9	29	870	155	52	0	6	213	0.2	7.3
Wasatch Mountains, West	21	68	854	103	139	45	13	300	0.4	4.4
West Desert, Mountain Ranges	3	10	113	13	3	0	0	16	0.1	1.6
West Desert, Tintic-Vernon	10	32	419	26	23	6	0	55	0.1	1.7
Zion	11	35	232	26	32	0	0	58	0.3	1.7
Unknown	5	16	358	35	77	3	23	138	0.4	8.6
Statewide*	236	761	24959	2221	3298	422	197	6138	0.2	8.1

*Totals for sample size and pursuers afield are not the sum of the columns because pursuers could pursue on multiple units.

Number of livestock depredation incidents and cougars taken by Wildlife Services, Utah 1993–2011.



Livestock losses due to cougar depredation, Utah 1993–2011.



APPENDIX

HISTORIC COUGAR HARVEST BY HUNT UNIT

Total cougar mortality for unit 1a – Box Elder, Raft River, Utah 1997–2011.

Year	Limited entry permits*	Harvest objective quota	Sport male harvest	Sport female harvest	Total sport harvest	Mean age	% permits filled	% quota filled	% females	% adult females	% ≥ 6 yrs old	Cougar treed / day	Wildlife services harvest	Other mortality	Total harvest + mortality
1997	8	—	3	3	6	3.3	75	—	50	—	7	—	1	0	7
1998	5	—	2	2	4	3.5	80	—	50	—	33	0.55	0	1	5
1999	5	—	1	2	3	2.3	60	—	67	—	0	0.35	2	0	5
2000	—	8	5	3	8	3.2	—	100	38	—	12	0.29	0	0	8
2001	—	8	3	3	6	2.6	—	75	50	—	0	0.46	0	1	7
2002	6	—	4	0	4	2.8	67	—	0	—	0	0.52	0	0	4
2003	6	—	2	3	5	3.0	83	—	60	—	0	0.30	1	0	6
2004	—	10	6	4	10	2.8	—	100	40	—	0	0.14	0	0	10
2005	—	10	4	4	8	2.0	—	80	50	—	0	0.11	0	0	8
2006	8	—	3	1	4	3.0	50	—	25	—	0	0.06	0	0	4
2007	6	—	0	1	1	10.0	17	—	100	—	100	0.16	0	0	1
2008	6	—	2	0	2	4.0	33	—	0	0	0	0.17	0	0	2
2009	7	—	3	1	4	2.8	57	—	25	0	0	0.46	0	0	4
2010	6	—	4	0	4	2.8	67	—	0	0	0	0.75	0	1	5
2011	5	—	4	0	4	5.3‡	80	—	0	0	33	0.24	0	0	4
Mean	6	9	3	2	5	3.6	61	89	37	0	12	0.33	0	0	5

*Permits include all limited entry, conservation and convention permits.

‡Preliminary data - will be finalized in next year's annual report.

Total cougar mortality for unit 1b – Box Elder, Desert, Utah 1990–2011.

Year	Limited entry permits*	Harvest objective quota	Sport male harvest	Sport female harvest	Total sport harvest	Mean age	% permits filled	% quota filled	% females	% adult females	% ≥ 6 yrs old	Cougar treed / day	Wildlife services harvest	Other mortality	Total harvest + mortality
1990	14	—	1	1	2	—	14	—	50	—	—	—	0	0	2
1991	14	—	4	1	5	—	36	—	20	—	—	—	0	0	5
1992	14	—	1	2	3	—	21	—	67	—	—	—	0	0	3
1993	9	—	1	1	2	—	22	—	50	—	—	—	0	0	2
1994	9	—	3	1	4	—	44	—	25	—	—	—	0	0	4
1995	9	—	7	1	8	—	89	—	13	—	—	—	0	0	8
1996	12	—	4	1	5	3.0	42	—	20	—	—	—	0	1	6
1997	8	—	4	3	7	3.5	88	—	43	—	7	—	1	1	9
1998	8	—	2	3	5	5.3	63	—	60	—	33	0.55	0	0	5
1999	8	—	1	4	5	2.3	63	—	80	—	0	0.35	0	0	5
2000	—	12	7	4	11	3.2	—	92	36	—	12	0.29	0	0	11
2001	—	12	8	7	15	2.4	—	125	47	—	13	0.47	4	1	20
2002	—	9	1	3	4	4.0	—	44	75	—	25	0.29	0	0	4
2003	12	—	4	2	6	5.8	50	—	33	—	50	0.46	0	1	7
2004	1	18	5	6	11	4.4	—	61	55	—	38	0.17	0	2	13
2005	—	18	3	3	6	3.6	—	33	50	—	0	0.13	1	0	7
2006	18	—	1	2	3	3.3	17	—	67	—	0	0.03	0	1	4
2007	12	—	3	2	5	2.3	42	—	40	—	0	0.27	0	2	7
2008	12	—	1	3	4	1.8	33	—	75	0	0	0.13	0	0	4
2009	10	—	0	1	1	2.0	10	—	100	0	0	0.28	0	0	1
2010	5	—	0	2	2	4.0	40	—	100	50	50	0.44	0	0	2
2011	6	—	1	1	2	3.0‡	33	—	50	50	0	0.24	0	0	2
Mean	10	14	3	2	5	3.4	42	71	52	25	15	0.29	0	0	6

*Permits include all limited entry, conservation and convention permits.

‡Preliminary data - will be finalized in next year's annual report.

Total cougar mortality for unit 1c – Box Elder, Pilot Mountain, Utah 1998–2011.

Year	Limited entry permits*	Harvest objective quota	Sport male harvest	Sport female harvest	Total sport harvest	Mean age	% permits filled	% quota filled	% females	% adult females	% ≥ 6 yrs old	Cougar treed / day	Wildlife services harvest	Other mortality	Total harvest + mortality
1998	6	3	0	0	0	—	0	0	—	—	—	—	0	0	0
1999	—	3	1	0	1	—	—	33	0	—	—	—	0	0	1
2000	—	3	0	0	0	—	—	0	—	—	—	—	0	0	0
2001	—	3	0	0	0	—	—	0	—	—	—	—	0	0	0
2002	—	4	1	2	3	4.5	—	75	67	—	0	0.00	0	0	3
2003	—	4	1	1	2	—	—	50	50	—	0	0.17	0	0	2
2004	—	4	1	0	1	—	—	25	0	—	0	0.25	0	0	1
2005	—	4	2	0	2	3.0	—	50	0	—	0	0.22	0	0	2
2006	—	4	0	0	0	—	—	0	—	—	—	0.00	0	0	0
2007	—	4	0	0	0	—	—	0	—	—	—	0.00	0	0	0
2008	—	4	0	0	0	—	—	0	—	—	—	—	0	0	0
2009	—	2	0	1	1	2.0	—	50	100	0	0	—	0	0	1
2010	—	2	0	0	0	—	—	0	—	—	—	—	0	0	0
2011	—	2	1	1	2	3.0‡	—	100	—	0	0	0.23	0	0	2
Mean	6	3	1	0	1	3.1	0	27	36	0	0	0.12	0	0	1

*Permits include all limited entry, conservation and convention permits.

‡Preliminary data - will be finalized in next year's annual report.

Total cougar mortality for unit 2 – Cache, Utah 1996–2011.

Year	Limited entry permits*	Harvest objective quota	Sport male harvest	Sport female harvest	Total sport harvest	Mean age	% permits filled	% quota filled	% females	% adult females	% ≥ 6 yrs old	Cougar treed / day	Wildlife services harvest	Other mortality	Total harvest + mortality
1996	20	—	10	6	16	4.0	80	—	38	—	29	—	3	1	20
1997	20	—	8	6	14	3.6	70	—	43	—	25	—	2	1	17
1998	19	—	8	3	11	3.5	58	—	27	—	17	0.47	0	1	12
1999	28	—	7	11	18	1.9	64	—	61	—	0	0.41	0	1	19
2000	—	35	17	19	36	2.5	—	103	53	—	9	0.21	2	0	38
2001	—	35	15	12	27	2.4	—	77	44	—	4	0.26	0	2	29
2002	—	12	2	4	6	2.0	—	50	67	—	0	0.07	1	1	8
2003	15	10	4	11	15	2.0	53	70	73	—	0	0.46	0	0	15
2004	—	19	9	6	15	2.8	—	79	40	—	0	0.06	0	1	16
2005	—	19	8	4	12	1.4	—	63	33	—	0	0.08	0	1	13
2006	19	—	3	5	8	1.4	42	—	63	—	0	0.15	0	2	10
2007	14	—	2	6	8	2.1	57	—	75	—	0	0.26	0	0	8
2008	14	—	7	3	10	2.3	71	—	30	10	0	0.08	1	1	12
2009	14	—	7	5	12	3.2	86	—	42	25	9	0.23	0	5	17
2010	14	—	4	6	10	4.1	71	—	60	40	13	0.16	0	1	11
2011	15	—	7	3	10	2.3‡	67	—	30	20	0	0.21	1	0	11
Mean	17	22	7	7	14	2.6	65	74	49	24	7	0.22	1	1	16

*Permits include all limited entry, conservation and convention permits.

‡Preliminary data - will be finalized in next year's annual report.

Total cougar mortality for unit 3 – Ogden, Utah 1996–2011.

Year	Limited entry permits*	Harvest objective quota	Sport male harvest	Sport female harvest	Total sport harvest	Mean age	% permits filled	% quota filled	% females	% adult females	% ≥ 6 yrs old	Cougar treed / day	Wildlife services harvest	Other mortality	Total harvest + mortality
1996	12	—	3	5	8	4.0	67	—	63	—	25	—	3	1	12
1997	18	—	6	4	10	2.9	56	—	40	—	13	—	0	0	10
1998	12	—	3	5	8	4.1	67	—	63	—	25	0.35	0	0	8
1999	10	—	3	3	6	3.0	60	—	50	—	20	0.18	0	0	6
2000	10	—	3	4	7	2.3	70	—	57	—	14	0.29	0	0	7
2001	—	7	6	2	8	2.5	—	114	25	—	17	0.56	1	2	11
2002	—	7	2	3	5	4.3	—	71	60	—	25	0.18	0	0	5
2003	12	—	5	3	8	4.0	67	—	38	—	0	—	0	0	8
2004	—	19	6	13	19	2.3	—	100	68	—	0	0.23	0	3	22
2005	—	19	1	6	7	2.6	—	37	86	—	14	0.07	0	0	7
2006	19	—	4	2	6	1.6	32	—	33	—	0	0.17	0	0	6
2007	14	—	5	4	9	2.8	64	—	44	—	14	0.28	0	0	9
2008	14	—	2	3	5	2.2	36	—	60	20	0	0.08	0	2	7
2009	14	—	4	3	7	3.4	50	—	43	29	0	0.14	0	0	7
2010	11	—	6	1	7	2.4	55	—	14	0	0	0.14	0	0	7
2011	15	—	3	3	6	3.0‡	40	—	50	17	0	0.22	0	1	7
Mean	13	13	4	4	8	3.0	55	81	50	16	10	0.22	0	1	9

*Permits include all limited entry, conservation and convention permits.

‡Preliminary data - will be finalized in next year's annual report.

Total cougar mortality for unit 4 – Morgan-Rich, Utah 1990–2011.

Year	Limited entry permits*	Harvest objective quota	Sport male harvest	Sport female harvest	Total sport harvest	Mean age	% permits filled	% quota filled	% females	% adult females	% ≥ 6 yrs old	Cougar treed / day	Wildlife services harvest	Other mortality	Total harvest + mortality
1990	13	—	0	0	0	—	0	—	—	—	—	—	0	0	0
1991	13	—	0	0	0	—	0	—	—	—	—	—	0	0	0
1992	13	—	0	0	0	—	0	—	—	—	—	—	0	0	0
1993	13	—	0	0	0	—	0	—	—	—	—	—	0	0	0
1994	14	—	0	0	0	—	0	—	—	—	—	—	0	0	0
1995	14	—	0	0	0	—	0	—	—	—	—	—	0	0	0
1996	7	—	3	2	5	2.5	71	—	40	—	0	—	3	1	9
1997	7	—	2	2	4	4.5	57	—	50	—	0	—	0	0	4
1998	7	—	1	2	3	2.5	43	—	67	—	0	0.42	1	1	5
1999	8	—	3	3	6	3.6	75	—	50	—	40	0.61	0	0	6
2000	12	—	6	4	10	1.6	83	—	40	—	0	0.44	0	0	10
2001	—	10	8	8	16	3.3	—	160	50	—	20	0.63	0	0	16
2002	—	12	4	5	9	2.9	—	75	56	—	13	0.30	0	2	11
2003	16	—	7	5	12	2.5	75	—	42	—	0	0.48	0	0	12
2004	16	—	7	4	11	3.0	69	—	36	—	11	0.26	2	1	14
2005	16	—	4	6	10	2.3	63	—	60	—	11	0.28	1	0	11
2006	11	—	5	6	11	3.3	100	—	55	—	10	0.27	0	0	11
2007	8	—	3	1	4	2.5	50	—	25	—	0	0.23	1	0	5
2008	8	—	2	1	3	2.0	38	—	33	0	0	0.28	0	0	3
2009	5	—	2	1	3	1.7	60	—	33	0	0	0.35	1	1	5
2010	6	—	3	1	4	2.8	67	—	25	0	0	0.20	0	0	4
2011	6	—	5	1	6	3.3‡	100	—	17	17	17	0.13	1	0	7
Mean	11	11	3	2	5	2.8	48	118	42	4	8	0.35	0	0	6

*Permits include all limited entry, conservation and convention permits.

‡Preliminary data - will be finalized in next year's annual report.

Total cougar mortality for unit 5 – East Canyon, Utah 1996–2011.

Year	Limited entry permits*	Harvest objective quota	Sport male harvest	Sport female harvest	Total sport harvest	Mean age	% permits filled	% quota filled	% females	% adult females	% ≥ 6 yrs old	Cougar treed / day	Wildlife services harvest	Other mortality	Total harvest + mortality
1996	8	—	4	1	5	3.7	63	—	20	—	0	—	0	0	5
1997	18	—	6	7	13	2.5	72	—	54	—	9	—	0	3	16
1998	22	—	7	9	16	2.6	73	—	56	—	6	0.30	0	3	19
1999	16	—	6	4	10	1.3	63	—	40	—	0	0.39	0	0	10
2000	18	—	3	6	9	2.3	50	—	67	—	0	0.00	0	1	10
2001	2	10	4	6	10	2.1	0	100	60	—	0	0.40	0	0	10
2002	—	7	4	4	8	2.3	—	114	50	—	0	0.25	0	0	8
2003	10	—	3	3	6	2.5	60	—	50	—	0	0.17	0	0	6
2004	9	—	1	3	4	3.0	44	—	75	—	0	0.08	0	0	4
2005	10	—	3	4	7	2.1	70	—	57	—	0	0.14	0	1	8
2006	8	—	2	2	4	3.0	50	—	50	—	33	0.07	1	0	5
2007	7	—	1	1	2	2.0	29	—	50	—	0	0.79	0	2	4
2008	5	—	2	0	2	2.0	40	—	0	0	0	0.09	0	0	2
2009	5	—	0	0	0	—	0	—	—	—	—	0.00	0	1	1
2010	2	—	1	0	1	5.0	50	—	0	0	0	0.19	0	0	1
2011	4	—	2	1	3	3.3‡	75	—	33	33	0	0.20	0	0	3
Mean	10	9	3	3	6	2.7	49	107	44	11	3	0.22	0	1	7

*Permits include all limited entry, conservation and convention permits.

‡Preliminary data - will be finalized in next year's annual report.

Total cougar mortality for unit 5a – East Canyon, Davis, Utah 2002–2011.

Year	Limited entry permits*	Harvest objective quota	Sport male harvest	Sport female harvest	Total sport harvest	Mean age	% permits filled	% quota filled	% females	% adult females	% ≥ 6 yrs old	Cougar treed / day	Wildlife services harvest	Other mortality	Total harvest + mortality
2002	2	—	2	0	2	1.5	100	—	0	—	0	—	0	0	2
2003	2	—	1	1	2	2.0	100	—	50	—	0	—	0	0	2
2004	2	—	1	1	2	2.0	100	—	50	—	0	—	0	0	2
2005	4	—	1	0	1	3.0	25	—	0	—	0	0.32	0	0	1
2006	—	4	1	3	4	2.0	—	100	75	—	0	0.05	0	1	5
2007	—	5	0	1	1	9.0	—	20	100	—	100	0.10	0	0	1
2008	—	5	0	0	0	—	—	0	—	—	—	0.03	0	0	0
2009	—	5	2	0	2	3.5	—	40	0	0	0	0.00	0	0	2
2010	—	5	2	2	4	3.8	—	80	50	50	0	0.25	0	0	4
2011	5	—	0	0	0	—	0	—	—	—	—	0.02	0	0	0
Mean	3	5	1	1	2	3.3	65	48	41	25	13	0.11	0	0	2

*Permits include all limited entry, conservation and convention permits.

Total cougar mortality for unit 6/7 – Chalk Creek/Kamas, Utah 1996–2011.

Year	Limited entry permits*	Harvest objective quota	Sport male harvest	Sport female harvest	Total sport harvest	Mean age	% permits filled	% quota filled	% females	% adult females	% ≥ 6 yrs old	Cougar treed / day	Wildlife services harvest	Other mortality	Total harvest + mortality
1996	10	—	4	3	7	6.0	70	—	43	—	100	—	1	0	8
1997	10	—	2	4	6	3.3	60	—	67	—	0	—	0	1	7
1998	10	—	4	4	8	2.2	80	—	50	—	0	0.39	0	3	11
1999	14	—	7	5	12	2.6	86	—	42	—	11	0.31	0	0	12
2000	—	12	8	4	12	2.5	—	100	33	—	9	0.57	0	0	12
2001	—	12	3	6	9	3.9	—	75	67	—	25	0.62	1	0	10
2002	—	12	6	5	11	3.2	—	92	45	—	18	0.47	6	1	18
2003	17	—	8	7	15	2.7	88	—	47	—	0	0.60	17	2	34
2004	12	—	7	3	10	2.6	83	—	30	—	14	0.33	3	0	13
2005	11	—	5	3	8	2.6	73	—	38	—	0	0.44	14	1	23
2006	10	—	5	4	9	2.2	90	—	44	—	0	0.23	12	0	21
2007	11	—	4	6	10	3.0	91	—	60	—	13	0.64	1	0	11
2008	8	—	4	5	9	3.6	75	—	56	22	13	0.31	2	0	11
2009	8	—	7	4	11	3.4	100	—	36	36	0	0.30	1	2	14
2010	5	—	4	4	8	2.3	80	—	50	25	0	0.67	7	3	18
2011	10	—	4	5	9	3.6‡	60	—	56	33	25	0.35	3	5	17
Mean	10	12	5	5	10	3.1	80	89	48	29	14	0.45	4	1	15

*Permits include all limited entry, conservation and convention permits.

‡Preliminary data - will be finalized in next year's annual report.

Total cougar mortality for unit 8 – North Slope, Utah 1996–2002.

Year	Limited entry permits*	Harvest objective quota	Sport male harvest	Sport female harvest	Total sport harvest	Mean age	% permits filled	% quota filled	% females	% adult females	% ≥ 6 yrs old	Cougar treed / day	Wildlife services harvest	Other mortality	Total harvest + mortality
1996	12	—	2	2	4	6.5	33	—	50	—	75	—	0	1	5
1997	3	12	9	3	12	3.8	—	—	25	—	23	—	0	1	13
1998	2	12	4	4	8	4.9	—	—	50	—	25	0.39	0	0	8
1999	2	12	5	1	6	3.8	—	—	17	—	17	0.31	0	0	6
2000	—	12	6	5	11	3.8	—	92	45	—	17	0.57	0	0	11
2001	—	14	8	6	14	3.2	—	100	43	—	8	0.32	0	0	14
2002	—	14	9	6	15	3.6	—	107	40	—	7	0.35	0	0	15
Mean	5	13	6	4	10	4.2	33	100	39	—	25	0.39	0	0	10

*Permits include all limited entry, conservation and convention permits.

Total cougar mortality for unit 8ab – North Slope, West Daggett/Summit, Utah 2003–2011.

Year	Limited entry permits*	Harvest objective quota	Sport male harvest	Sport female harvest	Total sport harvest	Mean age	% permits filled	% quota filled	% females	% adult females	% ≥ 6 yrs old	Cougar treed / day	Wildlife services harvest	Other mortality	Total harvest + mortality
2003	—	10	4	3	7	4.0	—	70	43	—	40	0.18	0	0	7
2004	—	10	3	4	7	3.0	—	70	57	—	0	0.29	1	0	8
2005	—	10	1	2	3	2.0	—	30	67	—	0	0.07	0	0	3
2006	—	10	1	2	3	3.0	—	30	67	—	0	0.30	0	0	3
2007	—	7	1	0	1	3.0	—	14	0	—	0	0.18	0	0	1
2008	—	5	1	1	2	2.0	—	40	50	0	0	0.29	0	0	2
2009	—	10	5	4	9	2.1	—	90	44	11	0	0.00	0	0	9
2010	10	—	3	0	3	2.3	30	—	0	0	0	0.29	0	0	3
2011	—	10	2	3	5	3.0‡	—	50	60	20	0	0.00	0	0	5
Mean	10	9	2	2	4	2.7	30	49	43	8	4	0.18	0	0	5

*Permits include all limited entry, conservation and convention permits.

‡Preliminary data - will be finalized in next year's annual report.

Total cougar mortality for unit 8c – North Slope, Three Corners, Utah 2003–2011.

Year	Limited entry permits*	Harvest objective quota	Sport male harvest	Sport female harvest	Total sport harvest	Mean age	% permits filled	% quota filled	% females	% adult females	% ≥ 6 yrs old	Cougar treed / day	Wildlife services harvest	Other mortality	Total harvest + mortality
2003	—	10	1	2	3	3.5	—	30	67	—	0	—	1	0	4
2004	—	10	1	1	2	4.5	—	20	50	—	50	0.20	0	0	2
2005	—	10	1	1	2	2.0	—	20	50	—	0	0.03	1	0	3
2006	—	10	1	1	2	2.5	—	20	50	—	0	0.00	0	0	2
2007	—	7	4	0	4	3.3	—	57	0	—	0	0.37	0	0	4
2008	—	5	2	2	4	2.8	—	80	50	25	0	0.41	0	0	4
2009	—	10	1	0	1	3.0	—	10	0	0	0	0.72	0	0	1
2010	7	—	1	0	1	2.0	14	—	0	0	0	0.23	0	0	1
2011	—	10	3	3	6	3.8‡	—	60	50	50	0	0.17	0	0	6
Mean	7	9	2	1	3	3.0	14	37	35	19	6	0.27	0	0	3

*Permits include all limited entry, conservation and convention permits.

‡Preliminary data - will be finalized in next year's annual report.

Total cougar mortality for unit 9 – South Slope, Utah 1990–2001.

Year	Limited entry permits*	Harvest objective quota	Sport male harvest	Sport female harvest	Total sport harvest	Mean age	% permits filled	% quota filled	% females	% adult females	% ≥ 6 yrs old	Cougar treed / day	Wildlife services harvest	Other mortality	Total harvest + mortality
1990	56	—	13	7	20	—	36	—	35	—	—	—	4	0	24
1991	56	—	18	12	30	—	54	—	40	—	—	—	0	1	31
1992	56	—	13	15	28	—	50	—	54	—	—	—	1	1	30
1993	57	—	14	14	28	—	49	—	50	—	—	—	2	0	30
1994	60	—	22	10	32	—	53	—	31	—	—	—	0	2	34
1995	63	—	24	10	34	—	54	—	29	—	—	—	1	2	37
1996	75	—	27	13	40	4.4	53	—	33	—	32	—	0	2	42
1997	62	—	12	9	21	3.6	34	—	43	—	11	—	1	1	23
1998	40	—	8	7	15	3.1	38	—	47	—	8	0.29	6	0	21
1999	35	—	4	6	10	3.4	29	—	60	—	9	0.26	1	0	11
2000	35	—	4	1	5	3.2	14	—	20	—	0	0.26	1	1	7
2001	35	—	7	6	13	4.2	37	—	46	—	23	0.31	0	1	14
Mean	53	—	14	9	23	3.7	42	—	41	—	14	0.28	1	1	25

*Permits include all limited entry, conservation and convention permits.

Total cougar mortality for unit 9a – South Slope, Yellowstone, Utah 2002–2011.

Year	Limited entry permits*	Harvest objective quota	Sport male harvest	Sport female harvest	Total sport harvest	Mean age	% permits filled	% quota filled	% females	% adult females	% ≥ 6 yrs old	Cougar treed / day	Wildlife services harvest	Other mortality	Total harvest + mortality
2002	8	—	1	1	2	3.0	25	—	50	—	22	0.14	2	0	4
2003	8	—	2	1	3	5.3	38	—	33	—	33	0.24	0	0	3
2004	—	10	1	5	6	2.5	—	60	83	—	0	0.11	0	0	6
2005	—	10	1	0	1	2.0	—	10	0	—	0	0.18	0	0	1
2006	10	—	2	0	2	3.5	20	—	0	—	0	0.05	0	0	2
2007	—	6	4	0	4	2.0	—	67	0	—	0	0.19	0	0	4
2008	—	6	3	0	3	2.7	—	50	0	0	0	0.12	1	1	5
2009	—	6	4	0	4	3.5	—	67	0	0	25	0.16	0	1	5
2010	—	6	5	1	6	2.2	—	100	17	0	0	0.05	0	1	7
2011	8	—	2	1	3	3.0‡	38	—	33	33	0	0.19	1	3	7
Mean	9	7	3	1	3	3.0	30	59	22	8	8	0.14	0	1	4

*Permits include all limited entry, conservation and convention permits.

‡Preliminary data - will be finalized in next year's annual report.

Total cougar mortality for unit 9bcd – South Slope, Vernal/Diamond/Bonanza, Utah 2002–2011.

Year	Limited entry permits*	Harvest objective quota	Sport male harvest	Sport female harvest	Total sport harvest	Mean age	% permits filled	% quota filled	% females	% adult females	% ≥ 6 yrs old	Cougar treed / day	Wildlife services harvest	Other mortality	Total harvest + mortality
2002	26	—	7	3	10	3.7	38	—	30	—	20	0.06	2	0	12
2003	25	—	5	4	9	5.0	36	—	44	—	40	0.20	3	2	14
2004	—	9	3	6	9	2.7	—	100	67	—	0	—	0	0	9
2005	—	20	5	4	9	1.8	—	45	44	—	0	0.03	0	0	9
2006	—	20	6	5	11	2.8	—	55	45	—	9	0.12	2	0	13
2007	—	20	7	1	8	3.8	—	40	13	—	20	0.24	0	0	8
2008	—	15	8	5	13	3.2	—	87	38	8	8	0.50	—	—	13
2009	—	15	7	3	10	3.1	—	67	30	20	13	0.56	0	0	10
2010	—	15	13	3	16	2.8	—	107	19	6	8	0.15	0	1	17
2011	20	—	0	1	1	6.0‡	5	—	100	100	100	0.22	0	0	1
Mean	24	16	6	4	10	3.5	26	71	43	33	22	0.23	1	0	11

*Permits include all limited entry, conservation and convention permits.

‡Preliminary data - will be finalized in next year's annual report.

Total cougar mortality for unit 10 – Book Cliffs, Utah 1990–2002.

Year	Limited entry permits*	Harvest objective quota	Sport male harvest	Sport female harvest	Total sport harvest	Mean age	% permits filled	% quota filled	% females	% adult females	% ≥ 6 yrs old	Cougar treed / day	Wildlife services harvest	Other mortality	Total harvest + mortality
1990	18	—	5	4	9	—	50	—	44	—	—	—	2	0	11
1991	18	—	11	2	13	—	72	—	15	—	—	—	0	1	14
1992	18	—	2	4	6	—	33	—	67	—	—	—	4	0	10
1993	18	—	11	1	12	—	67	—	8	—	—	—	1	0	13
1994	22	—	8	3	11	—	50	—	27	—	—	—	0	0	11
1995	26	—	10	4	14	—	54	—	29	—	—	—	1	1	16
1996	40	—	11	7	18	4.2	45	—	39	—	18	—	0	1	19
1997	—	30	14	14	28	4.5	—	93	50	—	37	—	3	0	31
1998	—	30	12	9	21	4.4	—	70	43	—	21	0.38	0	1	22
1999	—	30	12	9	21	3.7	—	70	43	—	11	0.19	1	1	23
2000	—	30	11	10	21	2.9	—	70	48	—	6	0.19	0	1	22
2001	—	30	10	13	23	3.6	—	77	57	—	13	0.19	0	0	23
2002	—	30	14	8	22	3.3	—	73	36	—	20	0.25	1	0	23
Mean	23	30	10	7	17	3.8	53	76	39	—	18	0.24	1	0	18

*Permits include all limited entry, conservation and convention permits.

Total cougar mortality for unit 10a – Book Cliffs, Bitter Creek, Utah 2003–2011.

Year	Limited entry permits*	Harvest objective quota	Sport male harvest	Sport female harvest	Total sport harvest	Mean age	% permits filled	% quota filled	% females	% adult females	% ≥ 6 yrs old	Cougar treed / day	Wildlife services harvest	Other mortality	Total harvest + mortality
2003	—	30	14	5	19	4.2	—	63	26	—	33	0.21	0	0	19
2004	—	30	10	6	16	2.9	—	53	38	—	8	0.25	2	0	18
2005	—	30	4	1	5	1.7	—	17	20	—	0	0.13	1	0	6
2006	20	—	7	1	8	2.7	40	—	13	—	0	0.14	3	1	12
2007	13	—	3	1	4	1.0	31	—	25	—	0	0.27	0	0	4
2008	14	—	8	2	10	3.1	71	—	20	20	14	0.30	0	0	10
2009	14	—	11	3	14	3.2	100	—	21	14	9	0.19	0	0	14
2010	15	—	7	3	10	3.5	60	—	30	10	11	0.22	0	0	10
2011	15	—	4	3	7	3.4‡	47	—	43	14	0	0.25	0	0	7
Mean	15	30	8	3	10	2.9	58	44	26	15	8	0.22	1	0	11

*Permits include all limited entry, conservation and convention permits.

‡Preliminary data - will be finalized in next year's annual report.

Total cougar mortality for unit 10b – Book Cliffs, Rattlesnake Canyon, Utah 2003–2011.

Year	Limited entry permits*	Harvest objective quota	Sport male harvest	Sport female harvest	Total sport harvest	Mean age	% permits filled	% quota filled	% females	% adult females	% ≥ 6 yrs old	Cougar treed / day	Wildlife services harvest	Other mortality	Total harvest + mortality
2003	—	4	0	0	0	—	—	0	—	—	—	—	3	0	3
2004	—	4	1	1	2	4.5	—	50	50	—	50	—	0	0	2
2005	—	4	1	0	1	—	—	25	0	—	—	0.04	0	0	1
2006	—	4	0	0	0	—	—	0	—	—	—	0.00	3	0	3
2007	—	4	0	0	0	—	—	0	—	—	—	0.00	0	0	0
2008	—	4	0	0	0	—	—	0	—	—	—	0.05	0	0	0
2009	—	4	1	0	1	4.0	—	25	0	0	0	0.18	0	0	1
2010	—	4	0	0	0	—	—	0	—	—	—	—	0	1	1
2011	—	2	2	0	2	3.5‡	—	100	0	0	0	0.16	0	0	2
Mean	—	4	1	0	1	4.0	—	22	13	0	17	0.07	1	0	1

*Permits include all limited entry, conservation and convention permits.

‡Preliminary data - will be finalized in next year's annual report.

Total cougar mortality for unit 11a – Nine Mile, Anthro, Utah 1990–2007.

Year	Limited entry permits*	Harvest objective quota	Sport male harvest	Sport female harvest	Total sport harvest	Mean age	% permits filled	% quota filled	% females	% adult females	% ≥ 6 yrs old	Cougar treed / day	Wildlife services harvest	Other mortality	Total harvest + mortality
1990	12	—	4	0	4	—	33	—	0	—	—	—	2	0	6
1991	12	—	5	3	8	—	67	—	38	—	—	—	0	0	8
1992	12	—	2	2	4	—	33	—	50	—	—	—	0	1	5
1993	12	—	3	3	6	—	50	—	50	—	—	—	0	2	8
1994	13	—	4	1	5	—	38	—	20	—	—	—	1	0	6
1995	13	—	5	4	9	—	69	—	44	—	—	—	1	2	12
1996	13	—	3	1	4	5.0	31	—	25	—	44	—	0	0	4
1997	13	—	2	3	5	3.8	38	—	60	—	20	—	0	0	5
1998	5	—	1	1	2	3.0	40	—	50	—	13	0.41	0	0	2
1999	5	—	1	0	1	2.9	20	—	0	—	0	0.25	0	0	1
2000	5	—	2	2	4	3.4	80	—	50	—	13	0.24	0	0	4
2001	—	6	2	1	3	3.7	—	50	33	—	0	0.43	0	1	4
2002	—	5	3	2	5	3.8	—	100	40	—	25	0.16	0	0	5
2003	—	5	1	1	2	5.0	—	40	50	—	0	0.02	0	1	3
2004	—	5	2	0	2	4.5	—	40	0	—	50	0.10	0	0	2
2005	—	5	1	0	1	—	—	20	0	—	—	0.03	0	0	1
2006	5	—	0	0	0	—	0	—	—	—	—	0.06	0	0	0
2007	3	—	0	2	2	3.0	67	—	100	—	0	0.33	0	0	2
Mean	9	5	2	1	4	3.8	44	50	36	—	17	0.20	0	0	4

*Permits include all limited entry, conservation and convention permits.

Total cougar mortality for unit 11bc – Nine Mile, Range Creek, Utah 1990–2007.

Year	Limited entry permits*	Harvest objective quota	Sport male harvest	Sport female harvest	Total sport harvest	Mean age	% permits filled	% quota filled	% females	% adult females	% ≥ 6 yrs old	Cougar treed / day	Wildlife services harvest	Other mortality	Total harvest + mortality
1990	16	—	5	3	8	—	50	—	38	—	—	—	0	0	8
1991	16	—	5	1	6	—	38	—	17	—	—	—	0	0	6
1992	16	—	6	1	7	—	44	—	14	—	—	—	0	1	8
1993	16	—	6	0	6	—	38	—	0	—	—	—	1	0	7
1994	16	—	5	4	9	—	56	—	44	—	—	—	0	0	9
1995	16	—	8	4	12	—	75	—	33	—	—	—	0	0	12
1996	16	—	6	1	7	3.6	44	—	14	—	44	—	0	0	7
1997	—	20	9	12	21	3.2	—	105	57	—	20	—	2	1	24
1998	—	16	7	7	14	3.5	—	88	50	—	13	0.41	1	0	15
1999	—	16	11	4	15	2.9	—	94	27	—	0	0.25	0	0	15
2000	—	16	7	9	16	3.4	—	100	56	—	13	0.24	0	0	16
2001	—	16	10	7	17	2.2	—	106	41	—	0	0.33	0	1	18
2002	—	16	11	5	16	2.6	—	100	31	—	6	0.06	1	0	17
2003	—	12	9	6	15	2.4	—	125	40	—	0	0.11	0	0	15
2004	—	25	4	8	12	5.3	—	48	67	—	42	0.06	1	2	15
2005	—	30	4	3	7	2.4	—	23	43	—	0	0.14	0	0	7
2006	—	20	5	4	9	3.1	—	45	44	—	25	0.07	0	1	10
2007	—	15	4	2	6	3.4	—	40	33	—	20	0.09	0	0	6
Mean	16	18	7	5	11	3.2	49	79	36	—	15	0.18	0	0	12

*Permits include all limited entry, conservation and convention permits.
 2003, 2004, and 2006 unit was called 11b, Nine Mile, Range Creek North.

Total cougar mortality for unit 11c – Nine Mile, Range Creek South, Utah 2003–2004.

Year	Limited entry permits*	Harvest objective quota	Sport male harvest	Sport female harvest	Total sport harvest	Mean age	% permits filled	% quota filled	% females	% adult females	% ≥ 6 yrs old	Cougar treed / day	Wildlife services harvest	Other mortality	Total harvest + mortality
2003	—	8	2	2	4	4.0	—	50	50	—	0	0.17	1	0	5
2004	—	10	2	3	5	—	—	50	60	—	—	—	0	0	5
Mean	—	9	2	3	5	4.0	—	50	55	—	0	0.17	1	0	5

*Permits include all limited entry, conservation and convention permits.

Unit was recombined with unit 11b in 2005.

Total cougar mortality for unit 11 – Nine Mile, Utah 2008–2011.

Year	Limited entry permits*	Harvest objective quota	Sport male harvest	Sport female harvest	Total sport harvest	Mean age	% permits filled	% quota filled	% females	% adult females	% ≥ 6 yrs old	Cougar treed / day	Wildlife services harvest	Other mortality	Total harvest + mortality
2008	—	12	4	4	8	2.0	—	67	50	13	0	0.06	1	0	9
2009	—	12	7	6	13	3.5	—	108	46	38	15	0.11	1	0	14
2010	—	12	9	3	12	3.1	—	100	25	17	0	0.16	0	0	12
2011	—	12	5	1	6	3.5‡	—	50	17	17	0	0.37	0	0	6
Mean	—	12	6	4	10	3.0	—	81	34	21	4	0.18	1	0	10

*Permits include all limited entry, conservation and convention permits.

‡Preliminary data - will be finalized in next year's annual report.

All subunits were recombined in 2008.

Total cougar mortality for unit 12 – San Rafael, Utah 1990–2011.

Year	Limited entry permits*	Harvest objective quota	Sport male harvest	Sport female harvest	Total sport harvest	Mean age	% permits filled	% quota filled	% females	% adult females	% ≥ 6 yrs old	Cougar treed / day	Wildlife services harvest	Other mortality	Total harvest + mortality
1990	4	—	0	0	0	—	0	—	—	—	—	—	0	0	0
1991	4	—	1	0	1	—	25	—	0	—	—	—	0	0	1
1992	4	—	0	0	0	—	0	—	—	—	—	—	0	0	0
1993	4	—	0	0	0	—	0	—	—	—	—	—	0	0	0
1994	4	—	1	0	1	—	25	—	0	—	0	—	0	0	1
1995	4	—	0	0	0	—	0	—	—	—	—	—	0	0	0
1996	4	—	1	0	1	1.0	25	—	0	—	0	—	0	0	1
1997	4	—	0	0	0	—	0	—	—	—	—	—	0	0	0
1998	0	—	0	0	0	—	—	—	—	—	—	0.34	0	1	1
1999	—	2	2	0	2	5.5	—	100	0	—	50	0.19	0	0	2
2000	—	7	0	0	0	—	—	0	—	—	—	0.21	1	1	2
2001	—	7	1	2	3	7.0	—	43	67	—	100	0.60	2	1	6
2002	—	7	0	0	0	—	—	0	—	—	—	—	2	0	2
2003	—	7	2	0	2	2.0	—	29	0	—	50	0.00	1	0	3
2004	—	7	2	1	3	2.0	—	43	33	—	0	0.25	0	0	3
2005	—	7	0	0	0	—	—	0	—	—	—	0.10	0	0	0
2006	—	5	0	0	0	—	—	0	—	—	—	—	0	0	0
2007	—	4	1	0	1	—	—	25	0	—	—	0.60	0	0	1
2008	—	4	0	1	1	7.0	—	25	100	100	0	0.05	0	1	2
2009	—	4	1	0	1	3.0	—	25	0	0	0	0.03	0	0	1
2010	—	4	1	0	1	2.0	—	25	0	0	0	0.09	0	0	1
2011	—	3	2	1	3	3.7‡	—	100	33	33	0	0.12	0	0	3
Mean	4	5	1	0	1	3.7	9	32	19	33	20	0.22	0	0	1

*Permits include all limited entry, conservation and convention permits.

‡Preliminary data - will be finalized in next year's annual report.

Total cougar mortality for unit 13a – La Sal, La Sal Mountains, Utah 1990–2006.

Year	Limited entry permits*	Harvest objective quota	Sport male harvest	Sport female harvest	Total sport harvest	Mean age	% permits filled	% quota filled	% females	% adult females	% ≥ 6 yrs old	Cougar treed / day	Wildlife services harvest	Other mortality	Total harvest + mortality
1990	8	—	0	0	0	—	0	—	—	—	—	—	0	0	0
1991	8	—	2	0	2	—	25	—	0	—	—	—	1	0	3
1992	8	—	1	1	2	—	25	—	50	—	—	—	1	0	3
1993	8	—	3	1	4	—	50	—	25	—	—	—	0	3	7
1994	9	—	3	1	4	—	44	—	25	—	—	—	0	0	4
1995	12	—	2	0	2	—	17	—	0	—	—	—	0	0	2
1996	12	—	3	2	5	2.9	42	—	40	—	0	—	1	0	6
1997	—	10	1	0	1	2.5	—	10	0	—	0	—	0	2	3
1998	—	10	3	0	3	2.3	—	30	0	—	0	0.34	0	0	3
1999	—	10	1	2	3	2.0	—	30	67	—	0	0.23	0	0	3
2000	—	10	4	3	7	2.9	—	70	43	—	0	0.36	0	0	7
2001	—	7	2	0	2	2.5	—	29	0	—	0	0.67	0	1	3
2002	—	7	5	0	5	2.4	—	71	0	—	0	0.14	4	0	9
2003	—	7	3	3	6	4.3	—	86	50	—	33	0.36	0	0	6
2004	—	15	3	0	3	2.5	—	20	0	—	0	0.10	4	0	7
2005	—	15	0	0	0	—	—	0	—	—	—	0.16	2	0	2
2006	—	10	1	0	1	7.0	—	10	0	—	100	0.24	0	1	2
Mean	9	10	2	1	3	3.1	29	36	20	—	13	0.29	1	0	4

*Permits include all limited entry, conservation and convention permits.

Total cougar mortality for unit 13b – La Sal, Dolores Triangle, Utah 1994–2006.

Year	Limited entry permits*	Harvest objective quota	Sport male harvest	Sport female harvest	Total sport harvest	Mean age	% permits filled	% quota filled	% females	% adult females	% ≥ 6 yrs old	Cougar treed / day	Wildlife services harvest	Other mortality	Total harvest + mortality
1994	5	—	1	0	1	—	20	—	0	—	—	—	0	0	1
1995	5	—	0	0	0	—	0	—	—	—	—	—	0	0	0
1996	5	—	2	0	2	4.0	40	—	0	—	—	—	0	0	2
1997	—	5	0	0	0	—	—	0	—	—	—	—	0	0	0
1998	—	5	0	0	0	—	—	0	—	—	—	0.34	0	0	0
1999	5	—	0	0	0	—	0	—	—	—	—	0.23	0	0	0
2000	—	5	0	0	0	—	—	0	—	—	—	0.36	0	0	0
2001	—	5	0	0	0	—	—	0	—	—	—	—	0	0	0
2002	—	5	0	0	0	—	—	0	—	—	—	—	0	0	0
2003	—	5	0	0	0	—	—	0	—	—	—	0.12	0	0	0
2004	—	10	0	0	0	—	—	0	—	—	—	0.00	1	0	1
2005	—	10	1	0	1	—	—	10	0	—	—	1.15	0	0	1
2006	—	5	0	0	0	—	—	0	—	—	—	—	0	1	1
Mean	5	6	0	0	0	4.0	15	1	0	—	—	0.37	0	0	0

*Permits include all limited entry, conservation and convention permits.

Total cougar mortality for unit 13 – La Sal, La Sal Mountains, Utah 2007–2011.

Year	Limited entry permits*	Harvest objective quota	Sport male harvest	Sport female harvest	Total sport harvest	Mean age	% permits filled	% quota filled	% females	% adult females	% ≥ 6 yrs old	Cougar treed / day	Wildlife services harvest	Other mortality	Total harvest + mortality
2007	—	10	4	2	6	2.7	—	60	33	—	0	0.28	0	1	7
2008	—	10	0	1	1	1.0	—	10	100	0	0	0.31	0	1	2
2009	—	7	2	2	4	5.0	—	57	50	50	33	0.42	0	1	5
2010	—	7	5	1	6	3.7	—	86	17	17	0	0.14	0	0	6
2011	—	5	3	2	5	4.0‡	—	100	40	40	0	0.40	0	0	5
Mean	—	8	3	2	4	3.3	—	63	48	27	7	0.31	0	1	5

*Permits include all limited entry, conservation and convention permits.

‡Preliminary data - will be finalized in next year's annual report.

All subunits were recombined in 2007.

Total cougar mortality for unit 14 – San Juan, Utah 1990–2001, 2006–2009.

Year	Limited entry permits*	Harvest objective quota	Sport male harvest	Sport female harvest	Total sport harvest	Mean age	% permits filled	% quota filled	% females	% adult females	% ≥ 6 yrs old	Cougar treed / day	Wildlife services harvest	Other mortality	Total harvest + mortality
1990	13	—	2	0	2	—	15	—	0	—	—	—	0	0	2
1991	13	—	3	2	5	—	38	—	40	—	—	—	0	0	5
1992	13	—	7	4	11	—	85	—	36	—	—	—	0	0	11
1993	13	—	2	2	4	—	31	—	50	—	—	—	0	1	5
1994	15	—	3	3	6	—	40	—	50	—	—	—	0	0	6
1995	24	—	7	2	9	—	38	—	22	—	—	—	0	0	9
1996	24	—	5	5	10	3.8	42	—	50	—	20	—	0	0	10
1997	—	20	13	8	21	5.1	—	105	38	—	33	—	0	1	22
1998	—	20	12	9	21	2.8	—	105	43	—	0	0.85	0	0	21
1999	—	20	6	4	10	3.1	—	50	40	—	0	0.37	0	0	10
2000	—	20	12	8	20	3.0	—	100	40	—	6	1.19	0	1	21
2001	—	25	9	8	17	3.7	—	68	47	—	20	0.48	0	0	17
2006	—	30	9	8	17	2.9	—	57	47	—	0	0.23	0	0	17
2007	—	25	10	5	16	2.6	—	64	33	—	8	0.13	0	0	16
2008	—	25	10	9	19	2.3	—	76	47	—	0	0.35	0	0	19
2009	—	20	8	8	16	3.1	—	80	50	—	7	0.47	0	1	17
Mean	16	23	7	5	13	3.2	41	78	40	—	9	0.51	0	0	13

*Permits include all limited entry, conservation and convention permits.

Unit 14 was split into subunits 14a and 14b from 2002 to 2005.

Total cougar mortality for unit 14a – San Juan, Abajo Mountains, Utah 2002–2005, 2010–2011.

Year	Limited entry permits*	Harvest objective quota	Sport male harvest	Sport female harvest	Total sport harvest	Mean age	% permits filled	% quota filled	% females	% adult females	% ≥ 6 yrs old	Cougar treed / day	Wildlife services harvest	Other mortality	Total harvest + mortality
2002	—	15	1	3	4	1.0	—	27	75	—	0	—	0	0	4
2003	—	15	9	7	16	3.9	—	107	44	—	25	0.56	0	1	17
2004	—	25	8	11	19	4.3	—	76	58	—	27	0.12	0	0	19
2005	—	25	4	1	5	1.0	—	20	20	—	0	0.31	0	0	5
2010	10	—	7	2	9	3.1	90	—	22	11	0	0.20	0	1	10
2011	10	—	4	0	4	4.3‡	40	—	0	0	25	0.35	0	1	5
Mean	10	20	6	4	10	2.9	65	57	36	6	13	0.31	0	1	10

*Permits include all limited entry, conservation and convention permits.

‡Preliminary data - will be finalized in next year's annual report.

Total cougar mortality for unit 14b – San Juan, Elk Ridge, Utah 2002–2005, 2010–2011.

Year	Limited entry permits*	Harvest objective quota	Sport male harvest	Sport female harvest	Total sport harvest	Mean age	% permits filled	% quota filled	% females	% adult females	% ≥ 6 yrs old	Cougar treed / day	Wildlife services harvest	Other mortality	Total harvest + mortality
2002	—	10	1	1	2	3.0	—	20	50	—	0	—	0	0	2
2003	—	10	5	3	8	3.8	—	80	38	—	17	0.27	0	0	8
2004	—	15	3	3	6	1.0	—	40	50	—	0	—	0	0	6
2005	—	15	1	1	2	10.0	—	13	50	—	100	0.11	0	0	2
2010	—	10	4	0	4	2.0	—	40	0	0	0	0.35	0	0	4
2011	—	10	8	2	10	4.0‡	—	100	20	0	25	0.21	0	0	10
Mean	—	12	4	2	5	4.0	—	49	35	0	24	0.24	0	0	5

*Permits include all limited entry, conservation and convention permits.

‡Preliminary data - will be finalized in next year's annual report.

Total cougar mortality for unit 15 – Henry Mountains, Utah 1990–2011.

Year	Limited entry permits*	Harvest objective quota	Sport male harvest	Sport female harvest	Total sport harvest	Mean age	% permits filled	% quota filled	% females	% adult females	% ≥ 6 yrs old	Cougar treed / day	Wildlife services harvest	Other mortality	Total harvest + mortality
1990	4	—	0	0	0	—	0	—	—	—	—	—	0	1	1
1991	4	—	1	1	2	—	50	—	50	—	—	—	0	0	2
1992	4	—	1	0	1	—	25	—	0	—	—	—	0	0	1
1993	4	—	1	1	2	—	50	—	50	—	—	—	0	0	2
1994	4	—	0	0	0	—	0	—	—	—	—	—	0	0	0
1995	4	—	1	1	2	—	50	—	50	—	—	—	0	0	2
1996	4	—	2	1	3	4.0	75	—	33	—	0	—	0	0	3
1997	—	5	1	5	6	4.4	—	120	83	—	20	—	0	0	6
1998	—	5	1	2	3	3.0	—	60	67	—	0	0.40	0	0	3
1999	—	5	3	0	3	1.3	—	60	0	—	0	0.38	0	0	3
2000	—	5	3	2	5	3.5	—	100	40	—	20	0.73	0	0	5
2001	—	8	3	3	6	2.8	—	75	50	—	0	0.55	0	0	6
2002	—	8	6	1	7	2.3	—	88	14	—	0	0.12	0	0	7
2003	—	8	3	4	7	4.0	—	88	57	—	20	0.35	0	0	7
2004	—	8	2	3	5	3.6	—	63	60	—	20	—	0	0	5
2005	—	8	1	0	1	—	—	13	0	—	—	0.28	0	0	1
2006	—	8	2	1	3	3.0	—	38	33	—	0	0.21	0	0	3
2007	—	6	0	0	0	—	—	0	—	—	—	0.38	0	0	0
2008	—	4	1	1	2	2.0	—	50	50	50	0	0.00	0	0	2
2009	—	4	1	1	2	4.0	—	50	50	50	0	—	0	0	2
2010	—	4	0	0	0	—	—	0	—	—	—	—	0	0	0
2011	—	3	0	1	1	—	—	33	—	0	—	0.12	0	0	1
Mean	4	6	2	1	3	3.2	36	56	40	33	7	0.32	0	0	3

*Permits include all limited entry, conservation and convention permits.

Total cougar mortality for unit 16a – Central Mountains, Nebo, Utah 1990–2011.

Year	Limited entry permits*	Harvest objective quota	Sport male harvest	Sport female harvest	Total sport harvest	Mean age	% permits filled	% quota filled	% females	% adult females	% ≥ 6 yrs old	Cougar treed / day	Wildlife services harvest	Other mortality	Total harvest + mortality
1990	26	—	13	3	16	—	62	—	19	—	—	—	16	0	32
1991	26	—	12	10	22	—	85	—	45	—	—	—	13	0	35
1992	26	—	10	5	15	—	58	—	33	—	—	—	8	0	23
1993	34	—	21	6	27	—	79	—	22	—	—	—	7	1	35
1994	34	—	12	7	19	—	56	—	37	—	—	—	11	0	30
1995	52	—	14	17	31	—	60	—	55	—	—	—	2	4	37
1996	43	—	5	11	16	2.9	37	—	69	—	7	—	2	0	18
1997	43	—	16	13	29	2.9	67	—	45	—	8	—	5	1	35
1998	34	—	9	10	19	4.8	56	—	53	—	17	0.40	1	0	20
1999	24	—	12	5	17	3.2	71	—	29	—	11	0.34	0	0	17
2000	24	—	11	3	14	2.7	58	—	21	—	3	0.37	0	0	14
2001	24	—	11	4	15	3.3	63	—	27	—	7	0.21	10	1	26
2002	24	—	10	9	19	3.5	79	—	47	—	18	0.26	2	0	21
2003	18	—	7	8	15	4.5	83	—	53	—	25	0.49	5	0	20
2004	18	—	9	7	16	3.1	89	—	44	—	7	0.44	2	3	21
2005	18	—	6	3	9	2.6	50	—	33	—	0	0.35	2	0	11
2006	12	—	4	3	7	3.3	58	—	43	—	0	0.21	4	0	11
2007	11	—	4	1	5	3.6	45	—	20	—	20	0.10	1	3	9
2008	9	—	3	1	4	3.8	44	—	25	0	25	0.53	5	0	9
2009	9	—	6	1	7	2.7	78	—	14	14	0	0.21	6	1	14
2010	9	—	5	2	7	2.7	78	—	29	29	0	0.38	2	2	11
2011	15	—	9	10	19	3.9‡	127	—	53	47	16	0.21	5	0	24
Mean	24	—	10	6	16	3.3	67	—	37	23	10	0.32	5	1	22

*Permits include all limited entry, conservation and convention permits.

‡Preliminary data - will be finalized in next year's annual report.

Before 2003, subunit was named "Manti, Nebo".

Total cougar mortality for unit 16a1 – Central Mountains, Nebo-West Face, Utah 2003–2011.

Year	Limited entry permits*	Harvest objective quota	Sport male harvest	Sport female harvest	Total sport harvest	Mean age	% permits filled	% quota filled	% females	% adult females	% ≥ 6 yrs old	Cougar treed / day	Wildlife services harvest	Other mortality	Total harvest + mortality
2003	—	20	10	10	20	2.9	—	100	50	—	5	0.46	0	0	20
2004	—	20	3	12	15	2.7	—	75	80	—	8	0.27	0	1	16
2005	—	20	6	5	11	1.9	—	55	45	—	0	0.10	0	0	11
2006	—	20	5	9	14	2.4	—	70	64	—	0	0.11	0	0	14
2007	20	—	8	3	11	1.9	55	—	27	—	0	0.39	0	0	11
2008	20	—	4	3	7	2.3	35	—	43	0	0	0.14	0	0	7
2009	20	—	12	3	15	3.5	75	—	20	13	20	0.19	0	0	15
2010	21	—	3	1	5	2.2	24	—	20	0	0	0.09	0	0	5
2011	25	—	9	8	17	4.0‡	68	—	47	35	19	0.17	0	0	17
Mean	21	20	7	6	13	2.6	51	75	44	12	6	0.21	0	0	13

*Permits include all limited entry, conservation and convention permits.

‡Preliminary data - will be finalized in next year's annual report.

Total cougar mortality for unit 16b – Central Mountains, North Manti, Utah 1990–2003.

Year	Limited entry permits*	Harvest objective quota	Sport male harvest	Sport female harvest	Total sport harvest	Mean age	% permits filled	% quota filled	% females	% adult females	% ≥ 6 yrs old	Cougar treed / day	Wildlife services harvest	Other mortality	Total harvest + mortality
1990	20	—	6	6	12	—	60	—	50	—	—	—	3	1	16
1991	20	—	9	2	11	—	55	—	18	—	—	—	2	1	14
1992	20	—	10	1	11	—	55	—	9	—	—	—	4	5	20
1993	35	—	15	8	23	—	66	—	35	—	—	—	3	5	31
1994	42	—	17	8	25	—	60	—	32	—	—	—	1	0	26
1995	52	—	20	10	30	—	58	—	33	—	—	—	2	3	35
1996	49	—	14	14	28	2.3	57	—	50	—	7	—	0	0	28
1997	48	—	13	10	23	3.2	48	—	43	—	8	—	1	0	24
1998	45	—	7	10	17	3.7	38	—	59	—	17	0.40	0	2	19
1999	40	—	11	13	24	3.2	60	—	54	—	11	0.34	4	0	28
2000	28	—	11	7	18	2.7	64	—	39	—	3	0.37	5	0	23
2001	28	—	11	7	18	2.8	64	—	39	—	6	0.18	0	2	20
2002	27	—	11	6	17	3.5	63	—	35	—	18	0.22	5	2	24
2003	28	—	9	6	15	2.7	54	—	40	—	0	0.24	3	7	25
Mean	34	—	12	8	19	3.0	57	—	38	—	9	0.29	2	2	24

*Permits include all limited entry, conservation and convention permits.
 Before 2003, subunit was named "Manti, North Manti".

Total cougar mortality for unit 16b1 – Central Mountains, Northwest Manti, Utah 2004–2011.

Year	Limited entry permits*	Harvest objective quota	Sport male harvest	Sport female harvest	Total sport harvest	Mean age	% permits filled	% quota filled	% females	% adult females	% ≥ 6 yrs old	Cougar treed / day	Wildlife services harvest	Other mortality	Total harvest + mortality
2004	16	—	6	2	8	2.7	50	—	25	—	0	—	0	1	9
2005	17	—	8	2	10	1.6	59	—	20	—	0	0.18	1	1	12
2006	16	—	4	2	6	3.2	38	—	33	—	0	0.35	0	0	6
2007	12	—	1	4	5	4.0	42	—	80	—	20	0.50	0	0	5
2008	10	—	4	0	4	2.5	40	—	0	0	0	0.43	0	0	4
2009	10	—	6	0	6	3.5	60	—	0	0	17	0.21	0	1	7
2010	10	—	8	1	9	2.7	90	—	11	0	0	0.10	0	0	9
2011	13	—	7	3	10	4.3‡	77	—	30	30	33	0.30	0	0	10
Mean	13	—	6	2	7	3.1	57	—	25	8	9	0.30	0	0	8

*Permits include all limited entry, conservation and convention permits.

‡Preliminary data - will be finalized in next year's annual report.

Total cougar mortality for Unit 16b2 – Central Mountains, Northeast Manti, Utah 2004–2011.

Year	Limited entry permits*	Harvest objective quota	Sport male harvest	Sport female harvest	Total sport harvest	Mean age	% permits filled	% quota filled	% females	% adult females	% ≥ 6 yrs old	Cougar treed / day	Wildlife services harvest	Other mortality	Total harvest + mortality
2004	—	20	9	11	20	4.7	—	100	55	—	33	—	0	0	20
2005	20	10	3	5	8	3.7	20	40	63	—	29	0.10	1	0	9
2006	18	—	5	1	6	2.4	33	—	17	—	0	0.27	1	0	7
2007	17	—	3	2	5	2.2	29	—	40	—	0	0.14	0	0	5
2008	13	—	4	1	5	4.6	31	—	20	20	20	0.33	1	0	6
2009	13	—	5	2	7	3.4	54	—	29	14	17	0.10	0	0	7
2010	13	—	3	8	11	2.8	85	—	73	45	0	0.13	1	0	12
2011	13	—	4	6	10	3.7‡	77	—	60	40	20	0.21	0	1	11
Mean	15	15	5	5	9	3.4	47	70	44	30	15	0.18	1	0	10

*Permits include all limited entry, conservation and convention permits.

‡Preliminary data - will be finalized in next year's annual report.

Total cougar mortality for unit 16c – Central Mountains, South Manti, Utah 1990–2003.

Year	Limited entry permits*	Harvest objective quota	Sport male harvest	Sport female harvest	Total sport harvest	Mean age	% permits filled	% quota filled	% females	% adult females	% ≥ 6 yrs old	Cougar treed / day	Wildlife services harvest	Other mortality	Total harvest + mortality
1990	29	—	12	3	15	—	52	—	20	—	—	—	2	1	18
1991	29	—	12	5	17	—	59	—	29	—	—	—	6	0	23
1992	29	—	14	3	17	—	59	—	18	—	—	—	5	1	23
1993	33	—	25	6	31	—	94	—	19	—	—	—	5	2	38
1994	37	—	20	9	29	—	78	—	31	—	—	—	4	0	33
1995	56	—	17	18	35	—	63	—	51	—	—	—	5	9	49
1996	44	—	13	14	27	3.4	61	—	52	—	7	—	3	1	31
1997	36	—	19	6	25	2.8	69	—	24	—	8	—	3	0	28
1998	40	—	15	9	24	2.4	60	—	38	—	17	0.40	3	2	29
1999	25	—	10	6	16	3.2	64	—	38	—	11	0.34	1	0	17
2000	20	—	10	5	15	2.7	75	—	33	—	3	0.37	0	0	15
2001	20	—	8	7	15	3.7	75	—	47	—	21	0.34	3	1	19
2002	21	—	13	4	17	3.7	81	—	24	—	13	0.31	1	1	19
2003	20	—	14	4	18	3.6	90	—	22	—	14	0.28	11	1	30
Mean	31	—	14	7	22	3.2	70	—	32	—	12	0.34	4	1	27

*Permits include all limited entry, conservation and convention permits.
 Before 2003, subunit was named "Manti, South Manti".

Total cougar mortality for unit 16c1 – Central Mountains, Southwest Manti, Utah 2004–2011.

Year	Limited entry permits*	Harvest objective quota	Sport male harvest	Sport female harvest	Total sport harvest	Mean age	% permits filled	% quota filled	% females	% adult females	% ≥ 6 yrs old	Cougar treed / day	Wildlife services harvest	Other mortality	Total harvest + mortality
2004	16	—	10	3	13	2.8	81	—	23	—	0	—	11	5	29
2005	16	—	8	2	10	2.0	63	—	20	—	0	0.32	1	0	11
2006	11	—	7	4	11	2.9	100	—	36	—	0	0.32	3	0	14
2007	8	—	3	3	6	3.5	75	—	50	—	20	0.30	0	0	6
2008	5	—	4	1	5	3.4	80	—	20	20	0	0.38	0	0	5
2009	5	—	6	0	6	3.0	60	—	0	0	0	0.43	0	2	8
2010	5	—	8	3	11	3.1	200	—	27	27	0	0.95	1	0	12
2011	8	—	7	1	8	3.6‡	100	—	13	13	0	0.17	2	1	11
Mean	9	—	7	2	9	3.0	95	—	24	15	3	0.41	2	1	12

*Permits include all limited entry, conservation and convention permits.

‡Preliminary data - will be finalized in next year's annual report.

Total cougar mortality for Unit 16c2 – Central Mountains, Southeast Manti, Utah 2004–2011.

Year	Limited entry permits*	Harvest objective quota	Sport male harvest	Sport female harvest	Total sport harvest	Mean age	% permits filled	% quota filled	% females	% adult females	% ≥ 6 yrs old	Cougar treed / day	Wildlife services harvest	Other mortality	Total harvest + mortality
2004	—	20	9	11	20	3.8	—	100	55	—	17	—	4	1	25
2005	19	10	7	10	17	3.6	37	100	59	—	21	0.13	1	1	19
2006	18	—	3	1	4	3.0	22	—	25	—	0	0.14	2	0	6
2007	18	—	6	1	7	3.0	39	—	14	—	17	0.16	0	0	7
2008	12	—	3	2	5	2.0	33	—	40	0	0	0.48	0	1	6
2009	12	—	7	1	8	3.5	58	—	13	0	0	0.60	0	0	8
2010	11	—	5	6	11	4.5	100	—	55	36	40	0.32	0	0	11
2011	11	—	9	2	11	4.4‡	91	—	18	18	18	0.21	0	1	12
Mean	14	15	6	4	10	3.5	54	100	35	14	14	0.29	1	1	12

*Permits include all limited entry, conservation and convention permits.

‡Preliminary data - will be finalized in next year's annual report.

Total cougar mortality for unit 17 – Wasatch Mountains, Utah 1990–2001.

Year	Limited entry permits*	Harvest objective quota	Sport male harvest	Sport female harvest	Total sport harvest	Mean age	% permits filled	% quota filled	% females	% adult females	% ≥ 6 yrs old	Cougar treed / day	Wildlife services harvest	Other mortality	Total harvest + mortality
1990	10	—	2	2	4	—	40	—	50	—	—	—	0	0	4
1991	10	—	2	1	3	—	30	—	33	—	—	—	0	0	3
1992	10	—	4	0	4	—	40	—	0	—	—	—	0	1	5
1993	28	—	11	4	15	—	54	—	27	—	—	—	6	7	28
1994	30	—	9	8	17	—	57	—	47	—	—	—	1	4	22
1995	43	—	15	10	25	—	58	—	40	—	—	—	4	8	37
1996	43	—	20	11	31	3.2	72	—	35	—	17	—	1	1	33
1997	42	—	18	11	29	3.4	69	—	38	—	19	—	2	11	42
1998	60	—	21	15	36	4.6	60	—	42	—	12	0.39	2	0	38
1999	55	—	15	13	28	2.6	51	—	46	—	11	0.23	1	0	29
2000	40	12	27	20	47	3.0	82	100	43	—	15	0.32	4	0	51
2001	40	24	21	26	47	2.8	68	83	55	—	7	0.26	5	5	57
Mean	34	18	14	10	24	3.3	57	92	38	—	14	0.30	2	3	29

*Permits include all limited entry, conservation and convention permits.

Total cougar mortality for unit 17a1 – Wasatch Mountains, Timpanogos, Utah 2002–2011.

Year	Limited entry permits*	Harvest objective quota	Sport male harvest	Sport female harvest	Total sport harvest	Mean age	% permits filled	% quota filled	% females	% adult females	% ≥ 6 yrs old	Cougar treed / day	Wildlife services harvest	Other mortality	Total harvest + mortality
2002	—	12	5	5	10	2.8	—	83	50	—	0	—	0	0	10
2003	—	15	5	1	6	4.0	—	40	17	—	0	0.38	0	1	7
2004	—	15	4	0	4	2.5	—	27	0	—	0	0.47	0	0	4
2005	—	12	0	4	4	1.3	—	33	100	—	0	0.21	0	0	4
2006	—	12	3	3	6	3.8	—	50	50	—	17	0.12	0	0	6
2007	—	12	2	1	3	3.0	—	25	33	—	33	0.04	0	0	3
2008	—	9	2	7	9	3.0	—	100	78	33	17	0.27	0	1	10
2009	—	12	2	4	6	1.5	—	50	67	0	0	0.08	1	0	7
2010	—	12	3	1	4	3.3	—	33	25	25	0	0.11	0	4	8
2011	—	12	3	2	5	2.8‡	—	42	40	40	0	0.24	1	1	7
Mean	—	12	3	3	6	2.8	—	48	46	25	7	0.21	0	1	7

*Permits include all limited entry, conservation and convention permits.

‡Preliminary data - will be finalized in next year's annual report.

Total cougar mortality for unit 17a2 – Wasatch Mountains, Cascade, Utah 2002–2011.

Year	Limited entry permits*	Harvest objective quota	Sport male harvest	Sport female harvest	Total sport harvest	Mean age	% permits filled	% quota filled	% females	% adult females	% ≥ 6 yrs old	Cougar treed / day	Wildlife services harvest	Other mortality	Total harvest + mortality
2002	—	12	7	6	13	2.6	—	108	46	—	17	—	0	1	14
2003	—	15	6	4	10	3.1	—	67	40	—	0	0.25	0	0	10
2004	—	15	4	4	8	3.8	—	53	50	—	33	0.50	0	0	8
2005	—	12	1	2	3	1.3	—	25	67	—	0	0.18	0	0	3
2006	—	12	5	3	8	4.0	—	67	38	—	14	0.18	0	0	8
2007	—	12	3	0	3	3.0	—	25	0	—	0	0.08	0	0	3
2008	—	9	3	6	9	3.7	—	100	67	22	22	0.49	0	0	9
2009	—	9	2	2	4	2.3	—	44	50	25	0	—	0	0	4
2010	—	9	4	4	8	2.3	—	89	50	13	0	0.37	0	0	8
2011	—	10	2	6	8	4.6‡	—	80	75	75	38	0.19	0	0	8
Mean	—	12	4	4	7	3.1	—	66	48	34	12	0.28	0	0	8

*Permits include all limited entry, conservation and convention permits.

‡Preliminary data - will be finalized in next year's annual report.

Total cougar mortality for unit 17a3 – Wasatch Mountains, West, Utah 2002–2011.

Year	Limited entry permits*	Harvest objective quota	Sport male harvest	Sport female harvest	Total sport harvest	Mean age	% permits filled	% quota filled	% females	% adult females	% ≥ 6 yrs old	Cougar treed / day	Wildlife services harvest	Other mortality	Total harvest + mortality
2002	13	—	5	5	10	3.3	77	—	50	—	22	0.46	1	0	11
2003	12	—	4	3	7	6.3	58	—	43	—	33	0.32	0	2	9
2004	11	—	5	3	8	3.5	73	—	38	—	25	0.38	1	1	10
2005	11	—	6	2	8	2.3	73	—	25	—	0	0.00	1	1	10
2006	13	—	7	4	11	3.4	85	—	36	—	0	0.49	1	1	13
2007	10	—	4	2	6	3.2	60	—	33	—	0	0.37	0	0	6
2008	10	—	7	3	10	3.1	90	—	30	10	0	0.38	1	3	14
2009	11	—	6	5	11	3.7	73	—	45	45	22	0.38	1	2	14
2010	11	—	6	1	7	2.2	55	—	14	14	0	0.27	0	6	13
2011	11	—	9	5	14	3.2‡	91	—	36	29	0	0.35	0	4	18
Mean	11	—	6	3	9	3.4	73	—	35	25	10	0.34	1	2	12

*Permits include all limited entry, conservation and convention permits.

‡Preliminary data - will be finalized in next year's annual report.

2002, 2003, and 2004 unit was called 17a Wasatch Mountains, West.

Total cougar mortality for Unit 17bc – Wasatch Mountains, Currant Creek / Avintaquin, Utah 2002–2003.

Year	Limited entry permits*	Harvest objective quota	Sport male harvest	Sport female harvest	Total sport harvest	Mean age	% permits filled	% quota filled	% females	% adult females	% ≥ 6 yrs old	Cougar treed / day	Wildlife services harvest	Other mortality	Total harvest + mortality
2002	26	—	8	6	14	3.6	54	—	43	—	21	0.13	3	0	17
2003	25	—	9	6	15	3.9	60	—	40	—	20	0.21	1	1	17
Mean	26	—	9	6	15	3.8	57	—	41	—	21	0.17	2	1	17

*Permits include all limited entry, conservation and convention permits.

Total cougar mortality for unit 17b – Wasatch Mountains, Carrant Creek, Utah 2004–2011.

Year	Limited entry permits*	Harvest objective quota	Sport male harvest	Sport female harvest	Total sport harvest	Mean age	% permits filled	% quota filled	% females	% adult females	% ≥ 6 yrs old	Cougar treed / day	Wildlife services harvest	Other mortality	Total harvest + mortality
2004	15	—	2	1	3	2.7	20	—	33	—	0	—	2	0	5
2005	14	—	3	2	5	4.5	36	—	40	—	25	0.14	0	0	5
2006	14	—	4	0	4	3.5	29	—	0	—	25	0.13	0	0	4
2007	14	—	1	2	3	1.5	21	—	67	—	0	0.25	0	0	3
2008	8	—	1	1	2	3.0	25	—	50	0	0	0.00	0	1	3
2009	7	—	4	1	5	3.4	71	—	20	20	0	0.15	2	0	7
2010	7	—	2	0	2	2.5	29	—	0	0	0	0.05	0	3	5
2011	7	—	3	0	3	3.0‡	43	—	0	0	0	0.21	1	3	7
Mean	11	—	3	1	3	3.0	34	—	26	5	6	0.13	1	1	5

*Permits include all limited entry, conservation and convention permits.

‡Preliminary data - will be finalized in next year's annual report.

Total cougar mortality for unit 17c – Wasatch Mountains, Avintaquin, Utah 2004–2011.

Year	Limited entry permits*	Harvest objective quota	Sport male harvest	Sport female harvest	Total sport harvest	Mean age	% permits filled	% quota filled	% females	% adult females	% ≥ 6 yrs old	Cougar treed / day	Wildlife services harvest	Other mortality	Total harvest + mortality
2004	—	15	1	9	10	2.6	—	67	90	—	0	—	0	0	10
2005	—	15	4	4	8	2.5	—	53	50	—	0	0.35	1	0	9
2006	—	15	2	2	4	1.7	—	27	50	—	0	0.16	0	0	4
2007	—	10	2	4	6	4.2	—	60	67	—	20	0.26	0	0	6
2008	—	10	6	1	7	3.3	—	70	14	0	14	0.11	0	0	7
2009	—	10	3	4	7	4.3	—	70	57	43	25	0.08	0	1	8
2010	—	10	5	4	9	3.4	—	90	44	33	0	0.30	1	1	11
2011	—	13	3	3	6	3.7‡	—	46	50	50	0	0.23	0	0	6
Mean	—	12	3	4	7	3.2	—	60	53	32	7	0.21	0	0	8

*Permits include all limited entry, conservation and convention permits.

‡Preliminary data - will be finalized in next year's annual report.

Total cougar mortality for unit 18 – Oquirrh-Stansbury, Utah 1990–2011.

Year	Limited entry permits*	Harvest objective quota	Sport male harvest	Sport female harvest	Total sport harvest	Mean age	% permits filled	% quota filled	% females	% adult females	% ≥ 6 yrs old	Cougar treed / day	Wildlife services harvest	Other mortality	Total harvest + mortality
1990	11	—	2	2	4	—	36	—	50	—	—	—	2	0	6
1991	11	—	7	2	9	—	82	—	22	—	—	—	1	0	10
1992	11	—	3	1	4	—	36	—	25	—	—	—	1	1	6
1993	15	—	6	2	8	—	53	—	25	—	—	—	0	1	9
1994	17	—	5	5	10	—	59	—	50	—	—	—	3	0	13
1995	26	—	6	9	15	—	58	—	60	—	—	—	0	0	15
1996	26	—	9	9	18	3.9	69	—	50	—	27	—	2	2	22
1997	20	—	6	5	11	4.9	55	—	45	—	27	—	2	2	15
1998	20	—	9	8	17	2.8	85	—	47	—	13	0.30	0	1	18
1999	13	—	7	3	10	4.0	77	—	30	—	11	0.20	0	0	10
2000	13	—	4	4	8	3.0	62	—	50	—	17	0.26	0	0	8
2001	13	—	6	3	9	4.6	69	—	33	—	25	0.17	0	0	9
2002	16	—	6	5	11	3.3	69	—	45	—	0	0.16	0	1	12
2003	12	—	6	2	8	4.0	67	—	25	—	0	0.45	0	3	11
2004	11	—	1	3	4	2.5	36	—	75	—	0	0.32	0	0	4
2005	7	—	1	4	5	4.4	71	—	80	—	40	0.18	1	3	9
2006	7	—	4	2	6	3.4	86	—	33	—	20	0.31	1	0	7
2007	6	—	2	0	2	3.0	33	—	0	—	0	0.28	0	0	2
2008	6	—	3	1	4	2.8	67	—	25	25	0	0.30	1	0	5
2009	6	—	1	1	2	3.5	33	—	50	50	0	0.18	1	0	3
2010	3	—	1	1	2	5.0	33	—	50	50	50	0.18	0	0	2
2011	4	—	1	1	2	2.5‡	50	—	50	50	0	0.22	0	0	2
Mean	12	—	4	3	8	3.6	58	—	42	44	14	0.25	1	1	9

*Permits include all limited entry, conservation and convention permits.

‡Preliminary data - will be finalized in next year's annual report.

Total cougar mortality for unit 19a – West Desert, Mountain Ranges, Utah 1990–2011.

Year	Limited entry permits*	Harvest objective quota	Sport male harvest	Sport female harvest	Total sport harvest	Mean age	% permits filled	% quota filled	% females	% adult females	% ≥ 6 yrs old	Cougar treed / day	Wildlife services harvest	Other mortality	Total harvest + mortality
1990	17	—	2	0	2	—	12	—	0	—	—	—	0	0	2
1991	17	—	0	1	1	—	6	—	100	—	—	—	3	1	5
1992	17	—	0	1	1	—	6	—	100	—	—	—	0	1	2
1993	20	—	3	1	4	—	20	—	25	—	—	—	2	1	7
1994	20	—	2	3	5	—	25	—	60	—	—	—	3	0	8
1995	20	—	4	4	8	—	40	—	50	—	—	—	3	6	17
1996	20	—	4	2	6	4.7	30	—	33	—	25	—	0	1	7
1997	—	10	4	6	10	4.8	—	100	60	—	31	—	0	0	10
1998	—	10	1	3	4	4.1	—	40	75	—	40	0.29	2	1	7
1999	—	10	1	2	3	3.2	—	30	67	—	17	0.20	0	0	3
2000	—	10	2	1	3	2.9	—	30	33	—	13	0.17	0	0	3
2001	—	8	3	0	3	3.0	—	38	0	—	0	0.29	0	0	3
2002	—	8	1	3	4	4.3	—	50	75	—	25	0.02	0	0	4
2003	—	8	2	0	2	4.0	—	25	0	—	0	0.00	0	0	2
2004	—	8	0	1	1	12.0	—	13	100	—	100	0.00	0	0	1
2005	—	8	1	1	2	2.0	—	25	50	—	0	0.14	0	0	2
2006	8	—	2	2	4	5.5	50	—	50	—	50	0.47	0	0	4
2007	8	—	0	1	1	5.0	13	—	100	—	0	0.00	0	0	1
2008	6	—	0	0	0	—	0	—	—	—	—	0.00	0	1	1
2009	6	—	0	3	3	7.0	50	—	100	100	67	0.29	0	1	4
2010	3	—	1	0	1	4.0	33	—	0	0	0	0.11	0	0	1
2011	4	—	2	1	3	3.7‡	75	—	33	0	33	0.14	0	0	3
Mean	13	9	2	2	3	4.7	28	39	53	33	27	0.15	1	1	4

*Permits include all limited entry, conservation and convention permits.

‡Preliminary data - will be finalized in next year's annual report.

Total cougar mortality for unit 19b – West Desert, Tintic-Vernon, Utah 1990–2011.

Year	Limited entry permits*	Harvest objective quota	Sport male harvest	Sport female harvest	Total sport harvest	Mean age	% permits filled	% quota filled	% females	% adult females	% ≥ 6 yrs old	Cougar treed / day	Wildlife services harvest	Other mortality	Total harvest + mortality
1990	11	—	3	2	5	—	45	—	40	—	—	—	3	0	8
1991	11	—	5	0	5	—	45	—	0	—	—	—	1	2	8
1992	11	—	3	1	4	—	36	—	25	—	—	—	4	0	8
1993	10	—	2	2	4	—	40	—	50	—	—	—	3	0	7
1994	10	—	2	2	4	—	40	—	50	—	—	—	8	1	13
1995	15	—	3	5	8	—	53	—	63	—	—	—	0	0	8
1996	15	—	4	7	11	4.7	73	—	64	—	25	—	1	3	15
1997	—	5	1	7	8	4.8	—	160	88	—	31	—	1	1	10
1998	—	5	3	5	8	4.1	—	160	63	—	40	0.29	0	0	8
1999	8	—	3	0	3	—	38	—	0	—	17	0.20	0	0	3
2000	8	—	2	3	5	—	63	—	60	—	13	0.17	0	0	5
2001	—	7	4	3	7	4.1	—	100	43	—	29	0.38	0	0	7
2002	15	—	1	3	4	2.0	27	—	75	—	0	0.25	1	0	5
2003	15	—	6	0	6	2.4	40	—	0	—	0	0.14	0	0	6
2004	15	—	1	2	3	3.0	20	—	67	—	0	0.48	1	0	4
2005	15	—	4	1	5	2.3	33	—	20	—	0	0.10	0	0	5
2006	9	—	3	3	6	3.3	67	—	50	—	33	0.28	0	0	6
2007	8	—	4	7	11	3.4	138	—	64	—	22	0.14	0	0	11
2008	6	—	2	1	3	2.3	50	—	33	0	0	0.19	0	0	3
2009	5	—	0	2	2	3.5	40	—	100	100	0	0.22	0	0	2
2010	3	—	1	0	1	5.0	33	—	0	0	0	0.14	0	0	1
2011	4	—	2	0	2	6.0‡	50	—	0	0	50	0.13	0	0	2
Mean	10	6	3	3	5	3.6	49	140	43	25	16	0.22	1	0	7

*Permits include all limited entry, conservation and convention permits.

‡Preliminary data - will be finalized in next year's annual report.

Total cougar mortality for unit 19c – West Desert, Tintic, Utah 2002.

Year	Limited entry permits*	Harvest objective quota	Sport male harvest	Sport female harvest	Total sport harvest	Mean age	% permits filled	% quota filled	% females	% adult females	% ≥ 6 yrs old	Cougar treed / day	Wildlife services harvest	Other mortality	Total harvest + mortality
2002	10	—	3	3	6	3.2	60	—	50	—	0.0%	—	0	0	6
Mean	10	—	3	3	6	3.2	60	—	50	—	0.0%	—	0	0	6

*Permits include all limited entry, conservation and convention permits.

Total cougar mortality for unit 20 – Southwest Desert, Utah 1990–2011.

Year	Limited entry permits*	Harvest objective quota	Sport male harvest	Sport female harvest	Total sport harvest	Mean age	% permits filled	% quota filled	% females	% adult females	% ≥ 6 yrs old	Cougar treed / day	Wildlife services harvest	Other mortality	Total harvest + mortality
1990	8	—	5	3	8	—	100	—	38	—	—	—	1	2	11
1991	8	—	3	1	4	—	50	—	25	—	—	—	0	1	5
1992	8	—	0	2	2	—	25	—	100	—	—	—	0	1	3
1993	8	—	3	3	6	—	75	—	50	—	—	—	0	1	7
1994	11	—	3	4	7	—	64	—	57	—	—	—	0	0	7
1995	12	—	2	3	5	—	42	—	60	—	—	—	0	0	5
1996	12	—	4	0	4	2.8	33	—	0	—	25	—	0	1	5
1997	—	12	5	4	9	4.4	—	75	44	—	22	—	0	2	11
1998	—	12	6	0	6	2.8	—	50	0	—	12	0.26	0	0	6
1999	—	12	2	2	4	3.0	—	33	50	—	0	0.29	0	0	4
2000	—	12	4	2	6	2.0	—	50	33	—	0	0.09	0	0	6
2001	—	12	8	1	9	3.5	—	75	11	—	25	0.36	0	0	9
2002	—	12	5	6	11	3.7	—	92	55	—	10	0.09	0	0	11
2003	—	12	5	4	9	2.8	—	75	44	—	0	0.07	0	0	9
2004	—	12	3	3	6	4.0	—	50	50	—	33	0.13	0	0	6
2005	—	12	6	0	6	1.8	—	50	0	—	0	0.11	0	0	6
2006	12	—	3	1	4	4.5	33	—	25	—	25	0.10	0	0	4
2007	12	—	3	4	7	3.7	58	—	57	—	0	0.04	0	0	7
2008	11	—	2	0	2	1.5	18	—	0	0	0	0.06	0	0	2
2009	8	—	1	1	2	2.5	25	—	50	0	0	0.21	0	0	2
2010	6	—	2	0	2	3.0	33	—	0	0	0	0.14	0	0	2
2011	6	—	2	1	3	4.0‡	50	—	33	33	0	0.08	0	0	3
Mean	9	12	4	2	6	3.1	47	61	36	8	10	0.15	0	0	6

*Permits include all limited entry, conservation and convention permits.

‡Preliminary data - will be finalized in next year's annual report.

Total cougar mortality for unit 21 – Fillmore, Utah 1990–2001.

Year	Limited entry permits*	Harvest objective quota	Sport male harvest	Sport female harvest	Total sport harvest	Mean age	% permits filled	% quota filled	% females	% adult females	% ≥ 6 yrs old	Cougar treed / day	Wildlife services harvest	Other mortality	Total harvest + mortality
1990	30	—	7	2	9	—	30	—	22	—	—	—	3	0	12
1991	30	—	8	5	13	—	43	—	38	—	—	—	1	1	15
1992	30	—	9	4	13	—	43	—	31	—	—	—	0	1	14
1993	35	—	22	9	31	—	89	—	29	—	—	—	2	2	35
1994	39	—	17	7	24	—	62	—	29	—	—	—	1	0	25
1995	47	—	18	12	30	—	64	—	40	—	—	—	0	0	30
1996	47	—	14	10	24	3.2	51	—	42	—	14	—	0	1	25
1997	—	40	20	20	40	4.3	—	100	50	—	29	—	0	5	45
1998	—	40	21	20	41	3.2	—	103	49	—	19	0.27	0	1	42
1999	—	25	10	16	26	3.4	—	104	62	—	12	0.23	1	0	27
2000	—	25	17	10	27	3.6	—	108	37	—	24	0.15	0	0	27
2001	—	30	11	17	28	3.4	—	93	61	—	8	0.41	0	0	28
Mean	37	32	15	11	26	3.5	55	102	41	—	18	0.27	1	1	27

*Permits include all limited entry, conservation and convention permits.

Total cougar mortality for unit 21a – Fillmore, Oak Creek, Utah 2002–2011.

Year	Limited entry permits*	Harvest objective quota	Sport male harvest	Sport female harvest	Total sport harvest	Mean age	% permits filled	% quota filled	% females	% adult females	% ≥ 6 yrs old	Cougar treed / day	Wildlife services harvest	Other mortality	Total harvest + mortality
2002	—	7	1	4	5	2.4	—	71	80	—	0	0.36	0	0	5
2003	—	7	3	4	7	3.3	—	100	57	—	0	0.17	0	0	7
2004	—	10	4	1	5	3.2	—	50	20	—	0	0.19	0	1	6
2005	1	15	2	3	5	2.4	—	33	60	—	0	0.10	0	0	5
2006	10	—	2	2	4	4.0	40	—	50	—	50	0.19	0	0	4
2007	10	—	3	2	5	2.8	50	—	40	—	0	0.06	0	0	5
2008	10	—	2	2	4	2.5	40	—	50	25	0	0.03	0	0	4
2009	10	—	1	1	2	2.5	20	—	50	50	0	0.16	1	0	3
2010	—	8	3	3	6	2.6	—	75	50	50	0	0.05	0	0	6
2011	8	—	1	3	4	3.0‡	50	—	75	25	0	0.12	0	0	4
Mean	8	9	2	3	5	2.9	40	66	53	38	5	0.14	0	0	5

*Permits include all limited entry, conservation and convention permits.

‡Preliminary data - will be finalized in next year's annual report.

Total cougar mortality for unit 21b – Fillmore, Pahvant, Utah 2002–2011.

Year	Limited entry permits*	Harvest objective quota	Sport male harvest	Sport female harvest	Total sport harvest	Mean age	% permits filled	% quota filled	% females	% adult females	% ≥ 6 yrs old	Cougar treed / day	Wildlife services harvest	Other mortality	Total harvest + mortality
2002	—	20	9	8	17	2.6	—	85	47	—	0	0.20	0	2	19
2003	11	7	9	4	13	5.3	73	86	31	—	33	0.21	0	1	14
2004	11	7	8	6	14	3.8	64	100	43	—	10	0.50	0	1	15
2005	18	15	5	2	7	2.2	17	27	29	—	0	0.11	1	1	9
2006	15	—	8	2	10	2.3	67	—	20	—	0	0.10	0	1	11
2007	10	—	5	3	8	2.6	80	—	38	—	14	0.19	0	0	8
2008	10	—	7	4	11	3.2	100	—	36	27	9	0.26	0	0	11
2009	10	—	6	4	10	5.4	90	—	40	40	33	0.25	0	2	12
2010	10	—	7	3	10	3.7	70	—	30	20	22	0.62	1	0	11
2011	9	—	9	2	11	3.7‡	89	—	18	9	10	0.31	0	4	15
Mean	12	12	7	4	11	3.5	72	74	33	24	13	0.28	0	1	13

*Permits include all limited entry, conservation and convention permits.

‡Preliminary data - will be finalized in next year's annual report.

Total cougar mortality for unit 22 – Beaver, Utah 1990–2011.

Year	Limited entry permits*	Harvest objective quota	Sport male harvest	Sport female harvest	Total sport harvest	Mean age	% permits filled	% quota filled	% females	% adult females	% ≥ 6 yrs old	Cougar treed / day	Wildlife services harvest	Other mortality	Total harvest + mortality
1990	27	—	9	2	11	—	41	—	18	—	—	—	2	0	13
1991	27	—	7	4	11	—	41	—	36	—	—	—	0	0	11
1992	27	—	13	3	16	—	59	—	19	—	—	—	0	1	17
1993	31	—	12	5	17	—	55	—	29	—	—	—	0	0	17
1994	33	—	14	3	17	—	52	—	18	—	—	—	4	0	21
1995	37	—	16	9	25	—	68	—	36	—	—	—	2	4	31
1996	37	—	12	2	14	2.8	38	—	14	—	9	—	0	1	15
1997	45	—	11	15	26	3.5	58	—	58	—	14	—	1	2	29
1998	35	—	11	15	26	3.0	74	—	58	—	12	0.32	0	0	26
1999	25	—	10	2	12	3.7	48	—	17	—	25	0.37	0	0	12
2000	25	—	11	3	14	2.6	56	—	21	—	8	0.30	1	0	15
2001	25	—	9	5	14	4.5	56	—	36	—	23	0.35	1	0	15
2002	26	—	9	6	15	3.4	58	—	40	—	8	0.32	0	2	17
2003	25	—	7	5	12	4.8	48	—	42	—	25	0.27	0	0	12
2004	25	—	10	5	15	2.8	60	—	33	—	9	0.33	0	0	15
2005	19	15	10	8	18	3.1	53	53	44	—	8	0.22	0	1	19
2006	19	—	9	9	18	4.4	95	—	50	—	22	0.18	0	0	18
2007	18	—	10	11	21	2.4	117	—	52	—	5	0.26	0	0	21
2008	15	—	8	6	14	3.5	80	—	43	21	8	0.27	0	1	15
2009	15	—	12	3	15	3.2	87	—	20	13	20	0.29	0	1	16
2010	12	—	8	4	12	4.0	83	—	33	25	17	0.40	0	1	13
2011	13	—	10	6	16	4.1‡	115	—	38	38	25	0.34	0	3	19
Mean	26	15	10	6	16	3.5	65	53	34	24	15	0.30	1	1	18

*Permits include all limited entry, conservation and convention permits.

‡Preliminary data - will be finalized in next year's annual report.

Total cougar mortality for unit 23 – Monroe, Utah 1990–2011.

Year	Limited entry permits*	Harvest objective quota	Sport male harvest	Sport female harvest	Total sport harvest	Mean age	% permits filled	% quota filled	% females	% adult females	% ≥ 6 yrs old	Cougar treed / day	Wildlife services harvest	Other mortality	Total harvest + mortality
1990	27	—	7	4	11	—	41	—	36	—	—	—	0	0	11
1991	27	—	11	6	17	—	63	—	35	—	—	—	0	0	17
1992	27	—	8	7	15	—	56	—	47	—	—	—	0	0	15
1993	34	—	10	8	18	—	53	—	44	—	—	—	2	0	20
1994	37	—	18	6	24	—	65	—	25	—	—	—	5	2	31
1995	34	—	11	5	16	—	47	—	31	—	—	—	0	0	16
1996	24	—	8	6	14	3.2	58	—	43	—	8	—	2	1	17
1997	40	—	9	8	17	3.8	43	—	47	—	28	—	2	1	20
1998	30	—	11	4	15	2.6	50	—	27	—	0	0.31	5	0	20
1999	25	—	5	2	7	2.7	28	—	29	—	0	0.42	0	0	7
2000	15	—	5	4	9	2.6	60	—	44	—	0	0.21	0	0	9
2001	15	—	4	2	6	4.4	40	—	33	—	40	0.16	0	0	6
2002	5	—	2	1	3	2.3	60	—	33	—	0	0.21	0	0	3
2003	5	—	4	0	4	2.7	80	—	0	—	0	0.30	0	0	4
2004	5	—	2	3	5	3.5	100	—	60	—	0	0.22	2	2	9
2005	6	—	6	0	6	2.0	100	—	0	—	0	0.22	0	1	7
2006	4	—	3	1	4	3.0	100	—	25	—	0	0.26	1	4	9
2007	5	—	3	0	3	4.3	60	—	0	—	33	0.38	1	9	13
2008	6	—	3	1	4	2.5	67	—	25	0	0	0.44	0	2	6
2009	9	—	7	0	7	3.5	67	—	0	0	0	0.55	2	3	12
2010	10	—	3	3	6	2.6	60	—	50	17	0	0.39	0	1	7
2011	12	—	1	7	8	3.8‡	67	—	88	75	13	0.31	0	2	10
Mean	18	—	6	4	10	3.1	62	—	33	23	8	0.31	1	1	12

*Permits include all limited entry, conservation and convention permits.

‡Preliminary data - will be finalized in next year's annual report.

Total cougar mortality for unit 24 – Mt. Dutton, Utah 1996–2011.

Year	Limited entry permits*	Harvest objective quota	Sport male harvest	Sport female harvest	Total sport harvest	Mean age	% permits filled	% quota filled	% females	% adult females	% ≥ 6 yrs old	Cougar treed / day	Wildlife services harvest	Other mortality	Total harvest + mortality
1996	15	—	5	3	8	3.0	53	—	38	—	0	—	0	1	9
1997	20	—	8	3	11	4.3	55	—	27	—	18	—	1	0	12
1998	20	—	2	6	8	4.8	40	—	75	—	25	0.45	0	0	8
1999	15	—	2	3	5	3.4	33	—	60	—	0	0.11	0	0	5
2000	15	—	1	5	6	3.2	40	—	83	—	0	0.13	0	0	6
2001	10	—	3	0	3	4.3	30	—	0	—	33	0.60	0	0	3
2002	5	—	1	2	3	4.0	60	—	67	—	0	0.18	0	0	3
2003	5	—	3	1	4	5.0	80	—	25	—	0	0.57	0	0	4
2004	10	—	1	1	2	4.0	20	—	50	—	0	0.12	2	1	5
2005	—	10	5	5	10	3.7	—	100	50	—	20	0.16	2	1	13
2006	10	—	5	5	10	3.4	100	—	50	—	11	0.23	1	0	11
2007	10	—	5	2	7	2.9	70	—	29	—	14	0.24	3	0	10
2008	11	—	5	6	11	2.4	100	—	55	9	0	0.49	0	0	11
2009	11	—	6	4	10	3.3	91	—	40	30	0	0.19	0	0	10
2010	10	—	3	5	8	4.6	80	—	63	50	43	0.83	0	0	8
2011	16	—	6	2	8	3.6‡	50	—	25	25	0	0.22	0	0	8
Mean	12	10	4	3	7	3.7	60	100	46	29	10	0.32	1	0	8

*Permits include all limited entry, conservation and convention permits.

‡Preliminary data - will be finalized in next year's annual report.

Total cougar mortality for unit 25a – Plateau, Fishlake, Utah 1990–2011.

Year	Limited entry permits*	Harvest objective quota	Sport male harvest	Sport female harvest	Total sport harvest	Mean age	% permits filled	% quota filled	% females	% adult females	% ≥ 6 yrs old	Cougar treed / day	Wildlife services harvest	Other mortality	Total harvest + mortality
1990	30	—	10	6	16	—	53	—	38	—	—	—	3	3	22
1991	30	—	13	4	17	—	57	—	24	—	—	—	6	3	26
1992	30	—	14	7	21	—	70	—	33	—	—	—	2	3	26
1993	36	—	23	7	30	—	83	—	23	—	—	—	7	3	40
1994	36	—	12	11	23	—	64	—	48	—	—	—	3	2	28
1995	43	—	11	16	27	—	63	—	59	—	—	—	4	8	39
1996	40	—	15	8	23	3.2	58	—	35	—	19	—	4	0	27
1997	45	—	11	20	31	4.2	69	—	65	—	21	—	4	1	36
1998	25	—	6	3	9	2.5	36	—	33	—	16	0.32	1	0	10
1999	15	—	6	3	9	3.1	60	—	33	—	4	0.32	0	0	9
2000	15	—	9	2	11	2.8	73	—	18	—	8	0.33	0	2	13
2001	15	—	5	5	10	3.8	67	—	50	—	11	0.28	0	1	11
2002	—	8	5	6	11	2.1	—	138	55	—	0	0.28	3	1	15
2003	6	4	6	2	8	2.0	67	100	25	—	0	0.32	0	3	11
2004	5	4	5	3	8	3.3	20	175	38	—	17	0.25	0	1	9
2005	6	8	7	5	12	1.8	67	100	42	—	0	0.12	0	1	13
2006	11	—	7	4	11	2.7	100	—	36	—	0	0.13	0	1	12
2007	11	—	6	3	9	3.5	82	—	33	—	0	0.29	0	3	12
2008	10	—	6	3	9	2.7	80	—	33	11	11	0.16	0	1	10
2009	7	—	6	4	10	3.1	129	—	40	20	11	0.20	0	1	11
2010	7	—	6	1	7	3.1	71	—	14	14	0	0.13	0	1	8
2011	8	—	6	5	11	3.8‡	125	—	45	45	9	0.27	3	0	14
Mean	21	6	9	6	15	3.0	71	128	37	23	8	0.24	2	2	18

*Permits include all limited entry, conservation and convention permits.

‡Preliminary data - will be finalized in next year's annual report.

Total cougar mortality for unit 25b – Plateau, Thousand Lakes, Utah 1994–2011.

Year	Limited entry permits*	Harvest objective quota	Sport male harvest	Sport female harvest	Total sport harvest	Mean age	% permits filled	% quota filled	% females	% adult females	% ≥ 6 yrs old	Cougar treed / day	Wildlife services harvest	Other mortality	Total harvest + mortality
1994	10	—	2	5	7	—	70	—	71	—	—	—	0	0	7
1995	12	—	5	1	6	—	50	—	17	—	—	—	0	2	8
1996	12	—	2	2	4	4.3	33	—	50	—	19	—	0	0	4
1997	—	10	1	7	8	4.4	—	80	88	—	21	—	0	0	8
1998	—	10	6	4	10	3.7	—	100	40	—	16	0.32	0	0	10
1999	—	10	4	4	8	3.1	—	80	50	—	4	0.32	0	0	8
2000	—	5	3	1	4	2.8	—	80	25	—	8	0.33	0	0	4
2001	—	5	3	2	5	6.3	—	100	40	—	25	0.25	0	1	6
2002	—	4	2	2	4	3.0	—	100	50	—	0	0.18	0	0	4
2003	—	4	2	2	4	4.0	—	100	50	—	0	—	0	0	4
2004	—	10	3	3	6	4.7	—	60	50	—	33	—	0	0	6
2005	—	10	3	2	5	3.6	—	50	40	—	20	0.06	0	0	5
2006	10	—	3	0	3	2.5	30	—	0	—	0	0.10	0	0	3
2007	11	—	3	1	4	1.5	36	—	25	—	0	0.00	0	1	5
2008	7	—	1	0	1	—	14	—	0	0	—	0.20	0	0	1
2009	5	—	2	1	3	2.7	60	—	33	33	—	0.09	0	0	3
2010	5	—	2	1	3	2.7	60	—	33	0	0	0.00	0	0	3
2011	10	—	2	1	3	5.3‡	30	—	33	33	33	0.16	0	0	3
Mean	9	8	3	2	5	3.6	43	83	39	17	13	0.17	0	0	5

*Permits include all limited entry, conservation and convention permits.

‡Preliminary data - will be finalized in next year's annual report.

Total cougar mortality for unit 25c – Plateau, Boulder, Utah 1990–2011.

Year	Limited entry permits*	Harvest objective quota	Sport male harvest	Sport female harvest	Total sport harvest	Mean age	% permits filled	% quota filled	% females	% adult females	% ≥ 6 yrs old	Cougar treed / day	Wildlife services harvest	Other mortality	Total harvest + mortality
1990	10	—	1	1	2	—	20	—	50	—	—	—	0	0	2
1991	10	—	3	1	4	—	40	—	25	—	—	—	0	2	6
1992	10	—	3	1	4	—	40	—	25	—	—	—	0	0	4
1993	13	—	4	4	8	—	62	—	50	—	—	—	0	0	8
1994	15	—	2	2	4	—	27	—	50	—	—	—	0	0	4
1995	18	—	5	1	6	—	33	—	17	—	—	—	1	2	9
1996	20	—	8	5	13	4.2	65	—	38	—	19	—	1	1	15
1997	—	20	11	16	27	4.1	—	135	59	—	21	—	3	4	34
1998	—	20	11	11	22	3.2	—	110	50	—	16	0.32	1	0	23
1999	—	15	6	6	12	3.1	—	80	50	—	4	0.32	0	0	12
2000	—	10	7	4	11	2.8	—	110	36	—	8	0.33	0	0	11
2001	—	10	4	7	11	3.3	—	110	64	—	13	0.46	0	0	11
2002	—	8	6	3	9	3.6	—	113	33	—	13	0.27	1	0	10
2003	10	4	4	3	7	2.7	30	100	43	—	0	0.57	0	1	8
2004	18	4	5	9	14	3.6	56	100	64	—	15	0.43	3	0	17
2005	—	15	11	4	15	2.4	—	100	27	—	0	0.19	3	3	21
2006	14	—	11	4	15	3.8	107	—	27	—	8	0.28	0	0	15
2007	14	—	6	4	10	2.6	71	—	40	—	10	0.50	0	1	11
2008	13	—	6	5	11	4.5	69	—	45	27	22	0.19	1	1	13
2009	9	—	5	4	9	4.2	100	—	44	33	29	0.12	1	2	12
2010	10	—	5	4	9	4.4	90	—	44	44	29	0.25	3	2	14
2011	16	—	9	5	14	3.5‡	88	—	36	21	17	0.39	2	4	20
Mean	13	12	6	5	11	3.5	60	106	42	32	14	0.33	1	1	13

*Permits include all limited entry, conservation and convention permits.

‡Preliminary data - will be finalized in next year's annual report.

Total cougar mortality for unit 26 – Kaiparowits, Utah 1997–2011.

Year	Limited entry permits*	Harvest objective quota	Sport male harvest	Sport female harvest	Total sport harvest	Mean age	% permits filled	% quota filled	% females	% adult females	% ≥ 6 yrs old	Cougar treed / day	Wildlife services harvest	Other mortality	Total harvest + mortality
1997	—	10	1	0	1	6.0	—	10	0	—	100	—	1	0	2
1998	—	10	2	0	2	4.0	—	20	0	—	0	0.06	1	0	3
1999	—	10	0	0	0	—	—	0	—	—	—	0.13	1	0	1
2000	—	10	1	0	1	1.5	—	10	0	—	0	0.17	1	0	2
2001	—	10	1	1	2	7.0	—	20	50	—	50	0.63	0	0	2
2002	—	10	0	1	1	1.0	—	10	100	—	0	0.04	1	0	2
2003	—	10	2	1	3	4.7	—	30	33	—	33	—	0	0	3
2004	—	10	1	0	1	1.0	—	10	0	—	0	—	2	0	3
2005	—	10	0	1	1	—	—	10	100	—	—	0.06	0	0	1
2006	—	10	1	1	2	3.5	—	20	50	—	50	0.21	0	0	2
2007	—	10	0	1	1	3.0	—	10	100	—	—	—	0	0	1
2008	—	7	0	1	1	2.0	—	14	100	0	0	0.16	0	0	1
2009	—	7	1	0	1	6.0	—	14	0	0	—	—	0	0	1
2010	—	7	4	1	5	2.0	—	71	20	0	0	—	1	0	6
2011	—	6	1	1	2	—	—	33	50	50	—	0.29	0	0	2
Mean	—	9	1	1	2	3.5	—	19	43	13	23	0.19	1	0	2

*Permits include all limited entry, conservation and convention permits.

Total cougar mortality for unit 27 – Paunsaugunt, Utah 1990–2011.

Year	Limited entry permits*	Harvest objective quota	Sport male harvest	Sport female harvest	Total sport harvest	Mean age	% permits filled	% quota filled	% females	% adult females	% ≥ 6 yrs old	Cougar treed / day	Wildlife services harvest	Other mortality	Total harvest + mortality
1990	14	—	4	1	5	—	36	—	20	—	—	—	0	0	5
1991	14	—	5	0	5	—	36	—	0	—	—	—	0	0	5
1992	14	—	4	1	5	—	36	—	20	—	—	—	0	1	6
1993	14	—	6	0	6	—	43	—	0	—	—	—	0	1	7
1994	14	—	3	3	6	—	43	—	50	—	—	—	0	0	6
1995	16	—	1	1	2	—	13	—	50	—	—	—	0	0	2
1996	20	—	10	6	16	3.1	80	—	38	—	0	—	2	1	19
1997	—	12	8	5	13	4.2	—	108	38	—	33	—	3	0	16
1998	—	12	9	5	14	2.8	—	117	36	—	8	0.09	0	1	15
1999	—	10	5	3	8	4.9	—	80	38	—	29	0.20	0	0	8
2000	—	10	9	3	12	3.3	—	120	25	—	8	0.18	0	1	13
2001	—	10	7	3	10	2.7	—	100	30	—	10	0.55	2	1	13
2002	—	10	4	7	11	4.2	—	110	64	—	22	0.16	1	1	13
2003	12	5	6	4	10	4.3	50	80	40	—	50	0.36	0	1	11
2004	12	5	2	4	6	4.8	33	40	67	—	40	0.10	1	0	7
2005	11	5	2	0	2	3.0	18	0	0	—	0	0.02	1	0	3
2006	8	—	2	2	4	3.7	50	—	50	—	0	0.13	0	0	4
2007	7	—	3	3	6	2.2	86	—	50	—	0	0.26	0	1	7
2008	9	—	2	1	3	2.0	33	—	33	0	0	0.26	0	0	3
2009	9	—	4	1	5	3.4	56	—	20	20	0	0.25	1	0	6
2010	9	—	2	1	3	2.5	33	—	33	33	0	0.41	0	1	4
2011	9	—	4	3	7	3.3‡	78	—	43	29	17	0.39	0	0	7
Mean	12	9	5	3	7	3.4	45	84	34	20	14	0.24	1	0	8

*Permits include all limited entry, conservation and convention permits.

‡Preliminary data - will be finalized in next year's annual report.

Total cougar mortality for unit 28 – Panguitch Lake, Utah 1990–2011.

Year	Limited entry permits*	Harvest objective quota	Sport male harvest	Sport female harvest	Total sport harvest	Mean age	% permits filled	% quota filled	% females	% adult females	% ≥ 6 yrs old	Cougar treed / day	Wildlife services harvest	Other mortality	Total harvest + mortality
1990	14	—	3	3	6	—	43	—	50	—	—	—	1	0	7
1991	14	—	4	2	6	—	43	—	33	—	—	—	0	0	6
1992	14	—	3	1	4	—	29	—	25	—	—	—	0	0	4
1993	14	—	9	3	12	—	86	—	25	—	—	—	0	1	13
1994	14	—	6	4	10	—	71	—	40	—	—	—	0	0	10
1995	17	—	8	5	13	—	76	—	38	—	—	—	0	0	13
1996	20	—	7	7	14	2.6	70	—	50	—	0	—	0	0	14
1997	20	—	10	5	15	2.9	75	—	33	—	7	—	0	2	17
1998	20	—	5	7	12	3.5	60	—	58	—	33	0.44	3	2	17
1999	15	—	5	5	10	3.3	67	—	50	—	0	0.51	1	0	11
2000	15	—	7	2	9	3.6	60	—	22	—	25	0.33	0	0	9
2001	—	10	6	4	10	2.8	—	100	40	—	10	0.77	2	0	12
2002	—	13	6	9	15	3.6	—	115	60	—	21	0.27	0	0	15
2003	12	6	7	6	13	2.9	67	83	46	—	0	0.19	2	2	17
2004	13	6	7	10	17	3.6	85	100	59	—	21	0.50	0	0	17
2005	11	8	7	4	11	2.8	36	88	36	—	11	0.31	0	1	12
2006	13	—	9	5	14	3.3	108	—	36	—	0	0.29	0	0	14
2007	12	—	8	6	14	2.6	117	—	43	—	8	0.25	1	1	16
2008	11	—	8	3	11	3.2	100	—	27	18	10	0.38	0	0	11
2009	11	—	6	5	11	2.8	100	—	45	18	0	0.41	0	0	11
2010	10	—	6	4	10	3.3	100	—	40	20	10	0.21	0	1	11
2011	11	—	8	5	13	3.6‡	100	—	38	38	8	0.37	0	1	14
Mean	14	9	7	5	11	3.1	75	97	41	24	10	0.37	0	1	12

*Permits include all limited entry, conservation and convention permits.

‡Preliminary data - will be finalized in next year's annual report.

Total cougar mortality for unit 29 – Zion, Utah 1990–2011.

Year	Limited entry permits*	Harvest objective quota	Sport male harvest	Sport female harvest	Total sport harvest	Mean age	% permits filled	% quota filled	% females	% adult females	% ≥ 6 yrs old	Cougar treed / day	Wildlife services harvest	Other mortality	Total harvest + mortality
1990	25	—	5	5	10	—	40	—	50	—	—	—	0	0	10
1991	25	—	10	1	11	—	44	—	9	—	—	—	0	0	11
1992	25	—	7	1	8	—	32	—	13	—	—	—	0	0	8
1993	25	—	10	6	16	—	64	—	38	—	—	—	5	1	22
1994	33	—	2	4	6	—	18	—	67	—	—	—	1	0	7
1995	38	—	17	8	25	—	66	—	32	—	—	—	1	2	28
1996	50	—	12	9	21	3.5	42	—	43	—	19	—	3	2	26
1997	50	—	16	14	30	3.4	60	—	47	—	17	—	0	2	32
1998	50	—	15	9	24	2.9	48	—	38	—	13	0.26	0	2	26
1999	50	—	4	9	13	2.6	26	—	69	—	7	0.26	0	0	13
2000	40	—	7	6	13	3.1	33	—	46	—	14	0.18	2	1	16
2001	40	—	6	4	10	3.5	25	—	40	—	0	0.29	1	2	13
2002	15	15	9	14	23	3.4	60	93	61	—	18	0.26	5	1	29
2003	15	15	9	10	19	3.5	33	93	53	—	0	0.76	4	0	23
2004	1	28	4	14	18	2.9	—	64	78	—	8	0.05	2	0	20
2005	—	28	5	3	8	3.0	—	29	38	—	25	0.15	0	2	10
2006	—	28	10	7	17	3.1	—	61	41	—	13	0.19	0	0	17
2007	—	28	10	7	17	3.8	—	61	41	—	27	0.17	1	1	19
2008	—	28	8	8	16	3.4	—	57	50	38	0	0.26	1	0	17
2009	—	21	6	9	15	3.5	—	71	60	47	9	0.23	3	2	20
2010	—	21	8	6	14	2.8	—	67	43	14	0	0.11	1	2	17
2011	—	18	10	6	16	3.3‡	—	89	38	25	10	0.25	0	1	17
Mean	32	23	9	7	16	3.2	42	69	45	31	11	0.24	1	1	18

*Permits include all limited entry, conservation and convention permits.

‡Preliminary data - will be finalized in next year's annual report.

Total cougar mortality for unit 30ab – Pine Valley, West Pine Valley/Commanche, Utah 1990–2007.

Year	Limited entry permits*	Harvest objective quota	Sport male harvest	Sport female harvest	Total sport harvest	Mean age	% permits filled	% quota filled	% females	% adult females	% ≥ 6 yrs old	Cougar treed / day	Wildlife services harvest	Other mortality	Total harvest + mortality
1990	40	—	14	1	15	—	38	—	7	—	—	—	1	2	18
1991	40	—	7	5	12	—	30	—	42	—	—	—	0	1	13
1992	40	—	7	6	13	—	33	—	46	—	—	—	0	1	14
1993	40	—	11	4	15	—	38	—	27	—	—	—	0	1	16
1994	42	—	10	10	20	—	48	—	50	—	—	—	0	0	20
1995	50	—	12	6	18	—	36	—	33	—	—	—	0	0	18
1996	50	—	11	6	17	2.6	34	—	35	—	0	—	0	1	18
1997	—	40	21	16	37	3.8	—	93	43	—	23	—	0	2	39
1998	—	40	13	16	29	2.3	—	73	55	—	14	0.21	0	0	29
1999	—	30	11	11	22	2.8	—	73	50	—	13	0.41	0	0	22
2000	—	30	11	8	19	2.6	—	63	42	—	11	0.18	0	0	19
2001	—	25	8	13	21	3.5	—	84	62	—	17	0.32	0	0	21
2002	20	10	7	4	11	2.5	40	30	36	—	10	0.18	2	1	14
2003	20	10	11	8	19	2.7	30	130	42	—	0	0.10	0	0	19
2004	20	10	10	5	15	2.7	35	80	33	—	8	0.18	0	1	16
2005	18	10	6	4	10	2.0	39	30	40	—	0	0.16	0	1	11
2006	15	—	11	5	16	3.5	107	—	31	—	13	0.13	0	0	16
2007	14	—	7	3	10	3.4	71	—	30	—	11	0.12	0	0	10
Mean	31	23	10	7	18	2.9	44	73	39	—	10	0.20	0	1	19

*Permits include all limited entry, conservation and convention permits.

Total cougar mortality for unit 30c – Pine Valley, Browse, Utah 1996–2007.

Year	Limited entry permits*	Harvest objective quota	Sport male harvest	Sport female harvest	Total sport harvest	Mean age	% permits filled	% quota filled	% females	% adult females	% ≥ 6 yrs old	Cougar treed / day	Wildlife services harvest	Other mortality	Total harvest + mortality
1996	15	—	4	1	5	3.0	33	—	20	—	0	—	0	0	5
1997	—	10	3	1	4	3.3	—	40	25	—	23	—	0	0	4
1998	—	10	3	4	7	3.8	—	70	57	—	14	0.21	0	0	7
1999	—	10	1	1	2	2.8	—	20	50	—	13	0.41	0	0	2
2000	—	10	1	0	1	2.6	—	10	0	—	11	0.18	0	0	1
2001	—	10	4	3	7	2.3	—	70	43	—	0	0.25	0	0	7
2002	—	10	2	0	2	1.5	—	20	0	—	0	0.19	0	0	2
2003	—	10	0	0	0	—	—	0	—	—	—	0.00	0	0	0
2004	—	10	2	1	3	1.7	—	30	33	—	0	—	0	0	3
2005	—	10	1	0	1	3.0	—	10	0	—	0	0.27	0	0	1
2006	8	—	2	3	5	3.5	63	—	60	—	0	0.11	0	0	5
2007	7	—	2	1	3	1.7	43	—	33	—	0	0.02	0	0	3
Mean	10	10	2	1	3	2.6	46	30	29	—	6	0.18	0	0	3

*Permits include all limited entry, conservation and convention permits.

Total cougar mortality for unit 30 – Pine Valley, Utah 2008–2011.

Year	Limited entry permits*	Harvest objective quota	Sport male harvest	Sport female harvest	Total sport harvest	Mean age	% permits filled	% quota filled	% females	% adult females	% ≥ 6 yrs old	Cougar treed / day	Wildlife services harvest	Other mortality	Total harvest + mortality
2008	19	—	10	7	17	3.1	89	—	41	18	13	0.23	0	0	17
2009	19	—	11	9	20	3.1	105	—	45	25	5	0.31	0	0	20
2010	19	—	7	6	13	3.6	68	—	46	31	0	0.13	0	1	14
2011	15	—	9	6	15	3.3‡	100	—	40	33	7	0.37	0	0	15
Mean	18	—	9	7	16	3.3	92	—	43	27	6	0.26	0	0	17

*Permits include all limited entry, conservation and convention permits.

‡Preliminary data - will be finalized in next year's annual report.

Subunits were recombined in 2008.